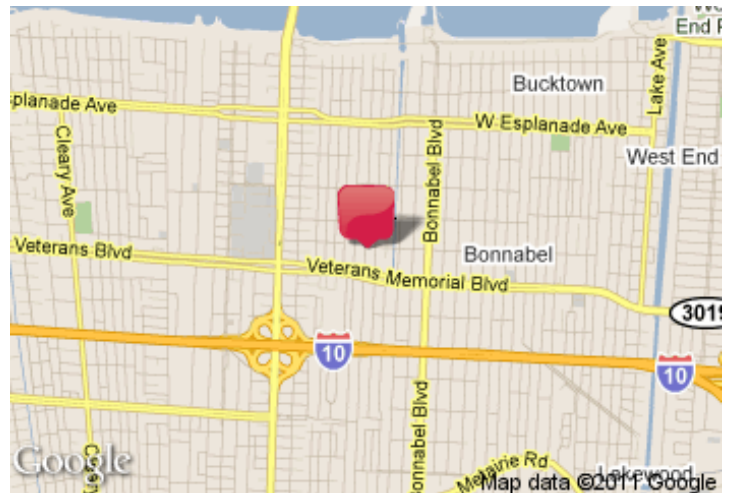


Metairie Office Bldg.

3001 Division St., Metairie, LA 70002



Listing ID: 3500605
Property Type: Office For Sale
Office Type: Office Building
Sale Price: \$2,800,000
Unit Price: \$91.71 Per SF
Sale Terms: Cash to Seller
Ceiling: 10 ft.
Nearest MSA: New Orleans-Metairie-Kenner
County: Jefferson
Property Use Type: Net Leased Investment (NNN),
Investment, Vacant/Owner-User,
Business
Class of Space: Class A
Gross Building Area (GBA): 34,189 SF
Building Size (RSF): 30,532 SF
Property Visibility: Excellent
Construction/Siding: Metal/Glass
Parking Ratio: 4
Parking Type: Surface



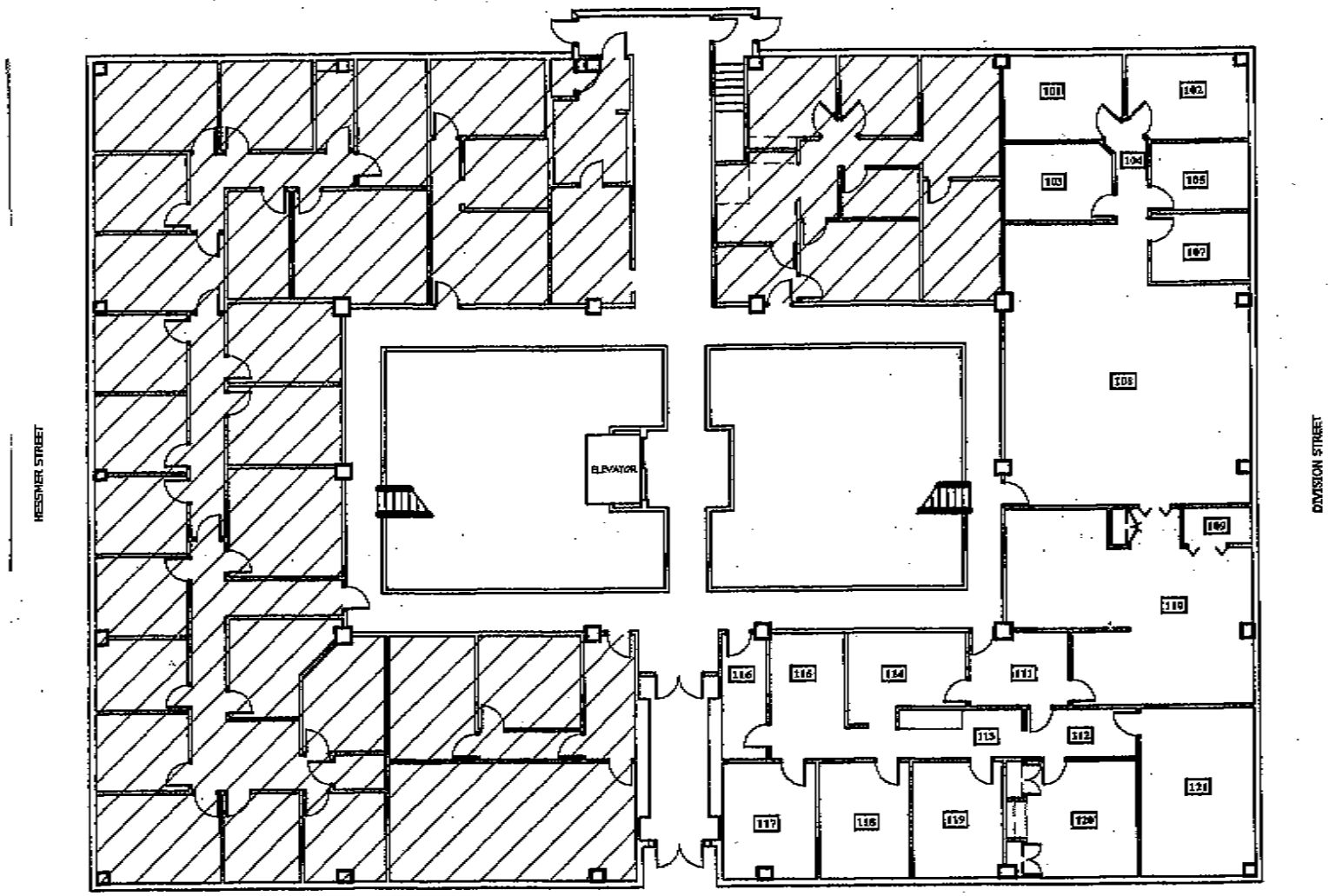
Property Overview

Please contact the agent for more information about this property.

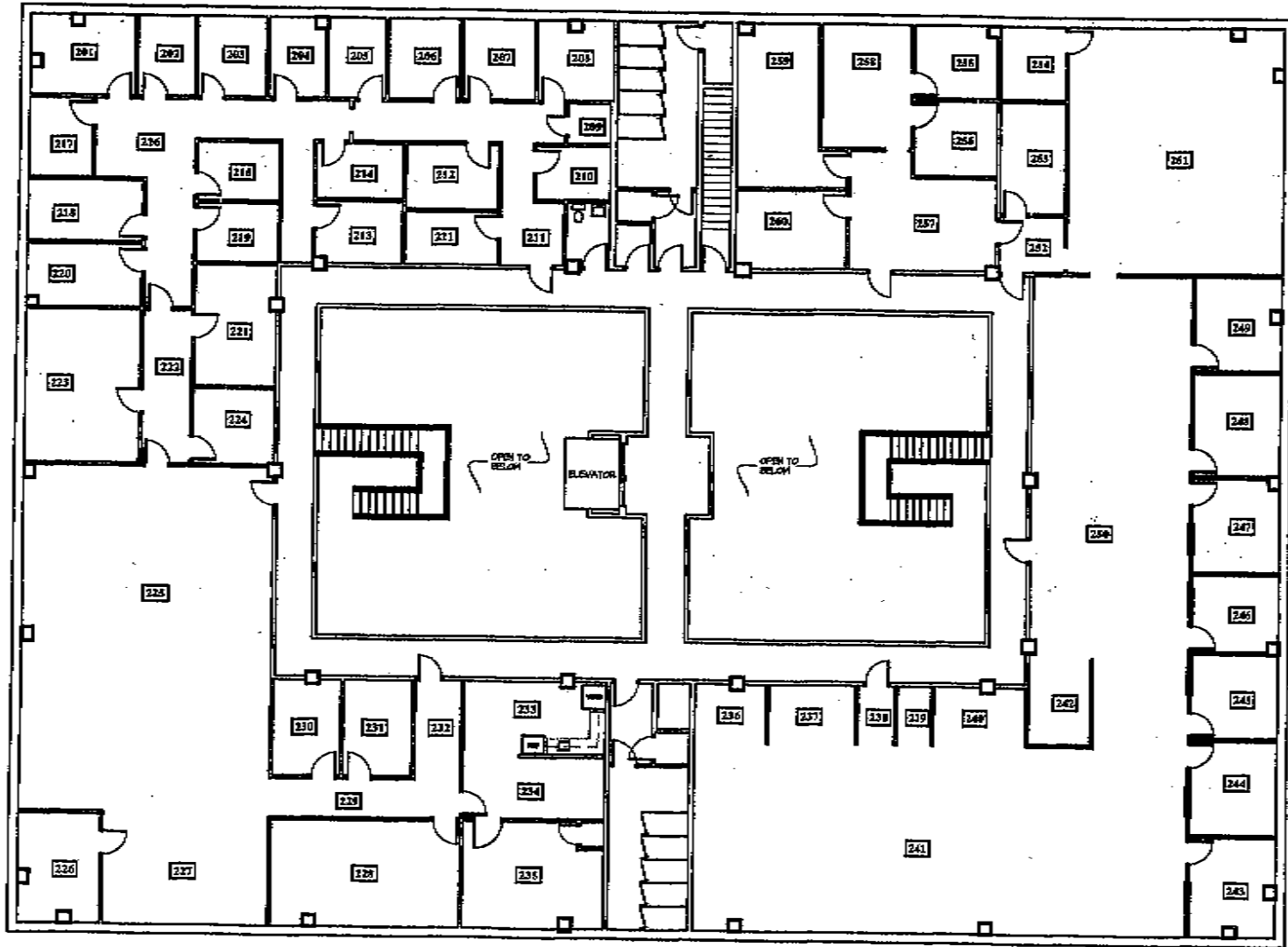
Property Contacts



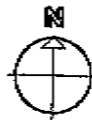
Mike Whitsell
Mike Whitsell & Associates LLC
5331 Canal Blvd., Suite C
New Orleans, LA 70124
504-669-4494 [M]
504-208-4266 [O]
Mike@WhitsellAssociates.com



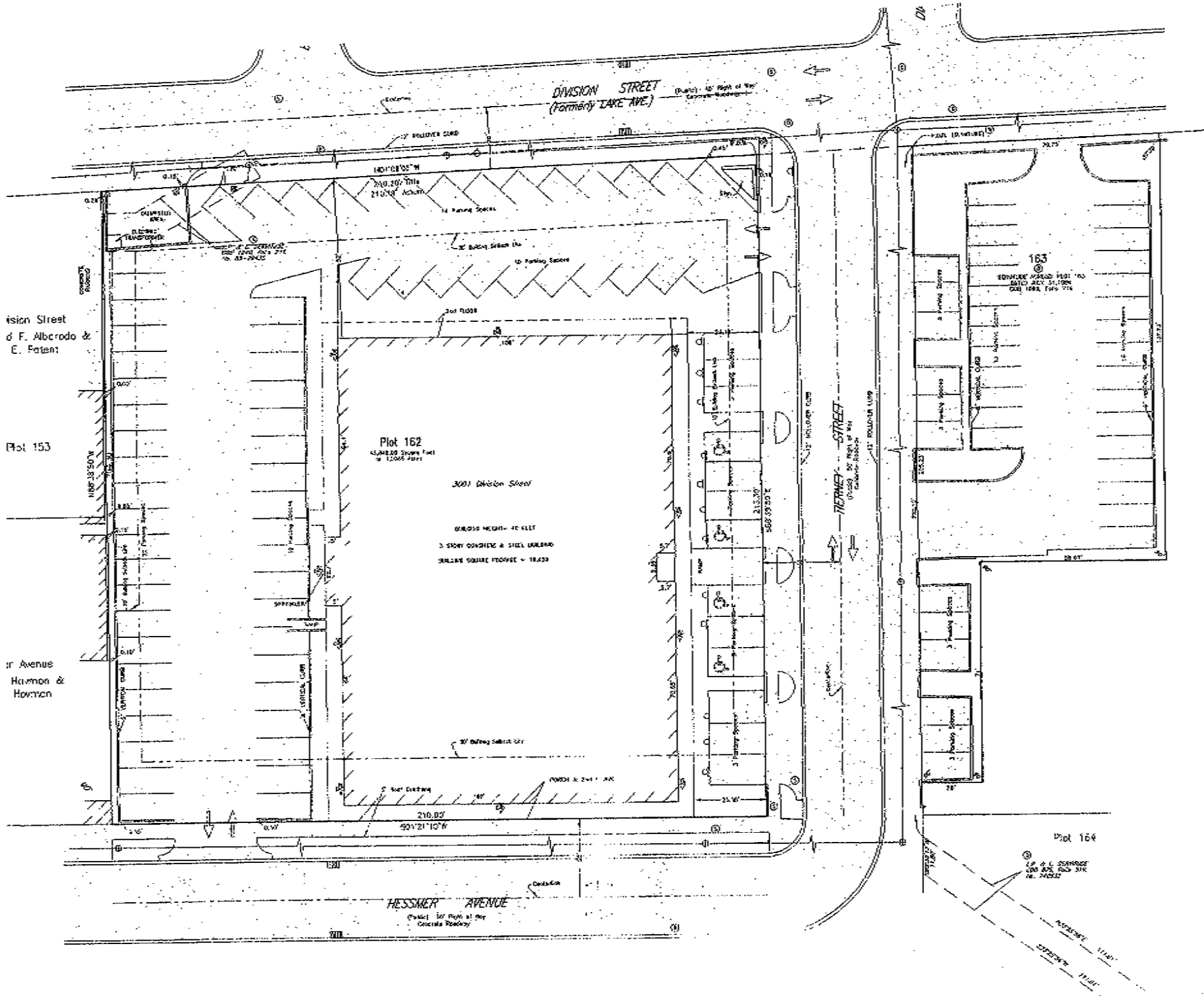
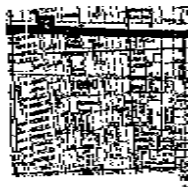
FIRST FLOOR PLAN - ROOM SCHEDULE
 1/8" = 1'-0"



TIERNEY STREET



SECOND FLOOR PLAN - ROOM SCHEDULE
 1/8" = 1'-0"



PLTA/AD

THIS
Int

Land

60
 No.
 (405) 364

Drawn By _____
 Surveyor
 Ref. No. _____
 Approved By _____
 Field In Charge
 Reviser
 Scale