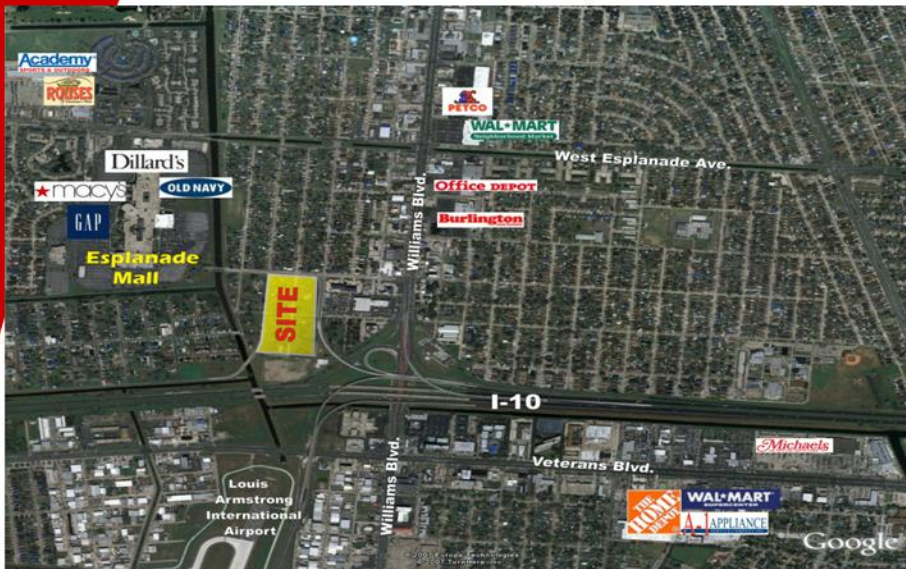


SALE OF LEASEHOLD OR SUBLEASE

Vacant Land at I-10 and 32nd Street Interchange
24.86 acres in Kenner, LA



Esplanade Mall

Area Retailers

2008 Demographics

	<u>5 mi</u>	<u>10 mi</u>	<u>15 mi</u>
Population	174,570	381,033	696,473
Avg. HH Inc.	\$60,571	\$59,572	\$53,102

TRAFFIC COUNTS

I-10 at Williams Blvd. is 140,642 ADT.

On Williams Blvd. is 48,490 ADT.

Richard Kirschman
Broker
3631 Canal Street
New Orleans, LA USA 70119

Phone: 504-486-8951
Direct: 504-486-8964
Fax: 504-486-8976
E-mail: rk@kirschmanrealty.com

*Licensed in LA, MS, AL, AR, TN

Beau Box
Broker
6777 Jefferson Hwy.
Baton Rouge, LA USA 70806

Phone: 225-237-3343
Fax: 225-237-3344
E-mail: bbox@beaubox.com

Kirschman
REALTY LLC

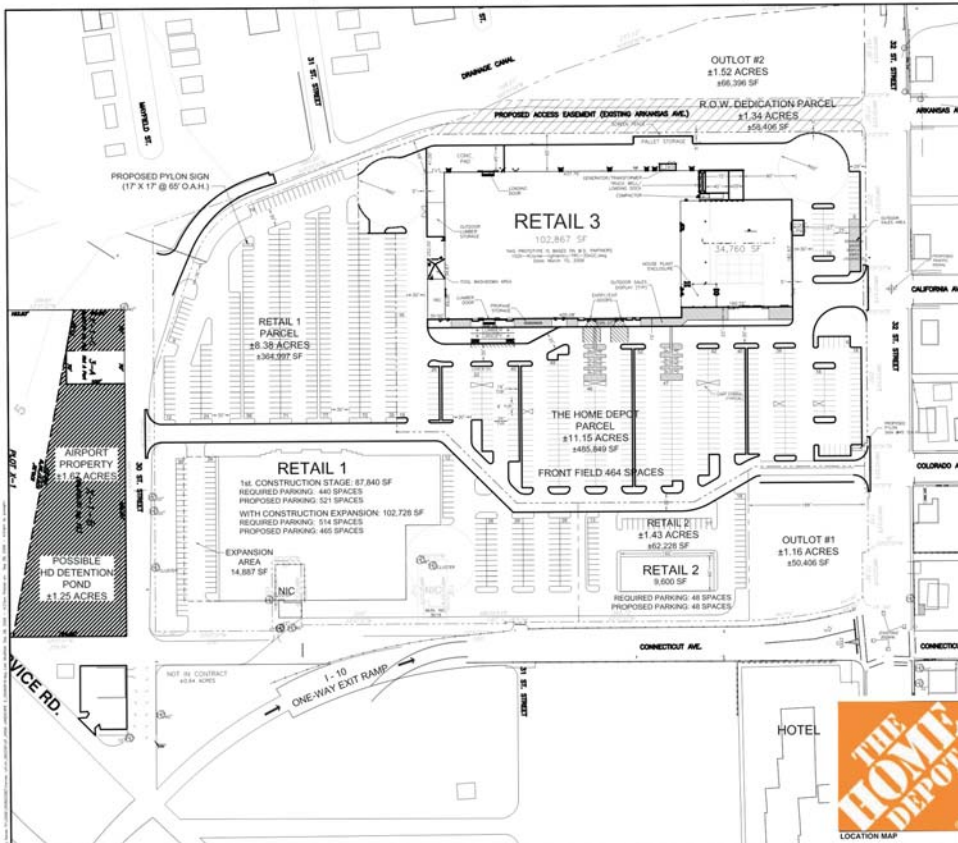
BEAU BOX
COMMERCIAL REAL ESTATE

The information contained herein has either been given to us by the owner of the property or obtained from sources that we deem reliable. No warranties or representations, expressed or implied are made as to the accuracy of the information contained herein, and same is submitted subject to errors, omissions, change of price, rental or other conditions, withdrawal without notice, and to any special listing imposed by our principals.

Home Depot Excess Property, I-10 & Williams Blvd. Kenner, LA



For Illustrative Purposes Only (possible site plan alternative)



Richard Kirschman
 Kirschman Realty, LLC
 3631 Canal St.
 New Orleans, LA USA 70119
 *Licensed in LA, MS, AL, AR, TN

Beau Box
 Beau Box Commercial Real Estate
 6777 Jefferson Hwy.
 Baton Rouge, LA USA 70806