

Vancouver

Film

STUDIOS

Home About Studios The Crew Contact

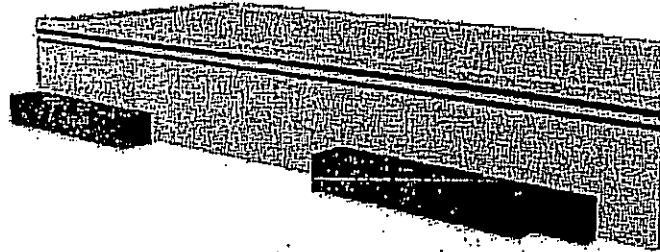
Studios:

- [Main Map](#)
- [Building A](#)
- [Building B](#)
- [Building C](#)
- [Building D](#)
- [Building E](#)
- [Building F](#)
- [Building G](#)
- [Building H](#)
- [Building I](#)
- [Building J](#)
- [Building K](#)
- [Building L](#)
- [Building M](#)
- [Building N](#)
- [Building X](#)

Building J

Building J houses three sound stages: Stage J-1 and Stage J-2 are 15,000 sq. ft each, and Stage J-3 is 18,000 sq. ft.

All buildings on the Vancouver Film Studios lot are equipped with 24-hour security, fax, telephone and high-speed Internet capabilities.



Studio J-1

Studio J-2

Studio J-3

Sq. Ft.	Dimensions	Height
15,000	100' x 150'	40'

Sq. Ft.	Dimensions	Height
15,000	100' x 150'	40'

Sq. Ft.	Dimensions
18,000	120' x 150'

Sound:

- Acoustical insulation
- 16' x 16' sound door
- Building acoustically-designed, with tilt-up concrete walls

Sound:

- Acoustical insulation
- 16' x 16' sound door
- Building acoustically-designed, with tilt-up concrete walls

Sound:

- Acoustical insulation
- 16' x 16' sound door
- Building acoustically-designed, with tilt-up concrete walls

Power:

- Director's control panels - 4 points
- 40 watts per sq ft
- 3 phase power, serviced from 2 locations within the stage, each with 4 camlocks

Power:

- Director's control panels - 4 points
- 40 watts per sq ft
- 3 phase power, serviced from 2 locations within the stage, each with 4 camlocks

Power:

- Director's control panels
- 40 watts per sq ft
- 3 phase power, serviced from 2 locations within the stage, each with 4 camlocks

Air:

- Mechanical smoke exhaust fans
- Fresh air exchange / heating

Air:

- Mechanical smoke exhaust fans
- Fresh air exchange / heating

Air:

- Mechanical smoke exhaust fans
- Fresh air exchange / heating

Structure:

- Cleats
- Protective roll-up doors
- Wooden catwalk system
- Truss system for lights

Structure:

- Cleats
- Protective roll-up doors
- Wooden catwalk system
- Truss system for lights

Structure:

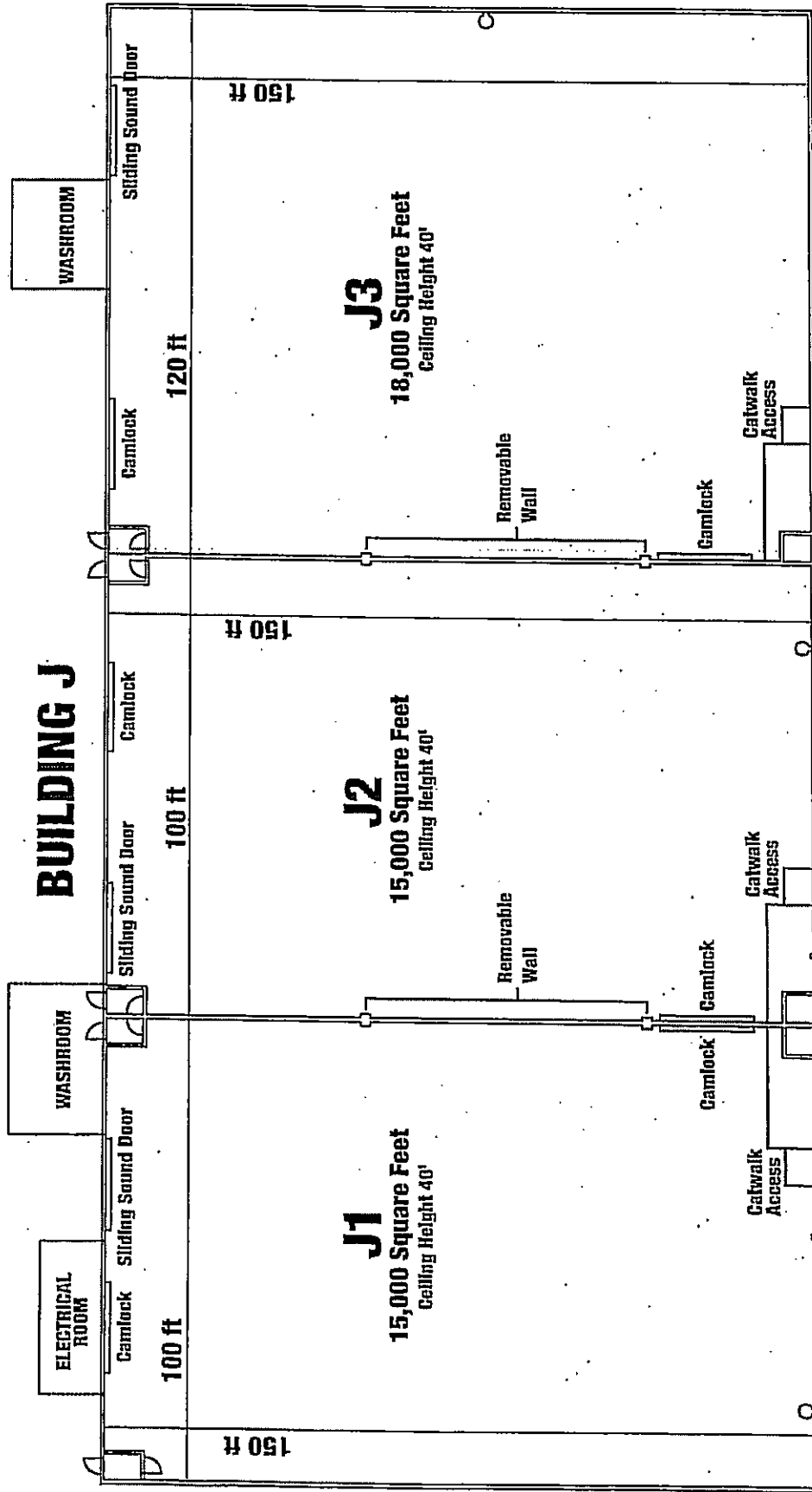
- Cleats
- Protective roll-up doors
- Wooden catwalk system
- Truss system for lights

- Truss load - avg 40lbs/sq ft, max point load 3500 lbs/truss
- Clear span
- Truss load - avg 40lbs/sq ft, max point load 3500 lbs/truss
- Clear span
- Truss load - avg 40lbs/sq ft, max point load 3500 lbs/truss
- Clear span



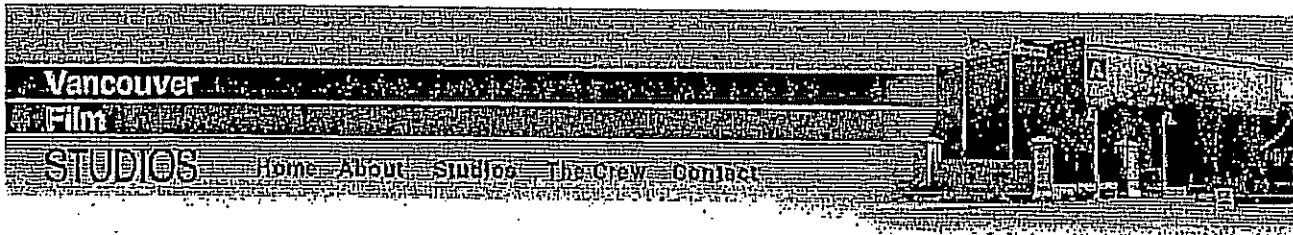
[Home](#) - [About Us](#) - [Studio Info](#) - [The Crew](#) - [Events](#) - [Contact Info](#)

DESIGNED BY  COLISTER.COM



Vancouver Film Studios
3500 Cornett Road
Vancouver, BC
Canada V5M 2H5

Telephone: (604) 453-5000
Facsimile: (604) 453-5045

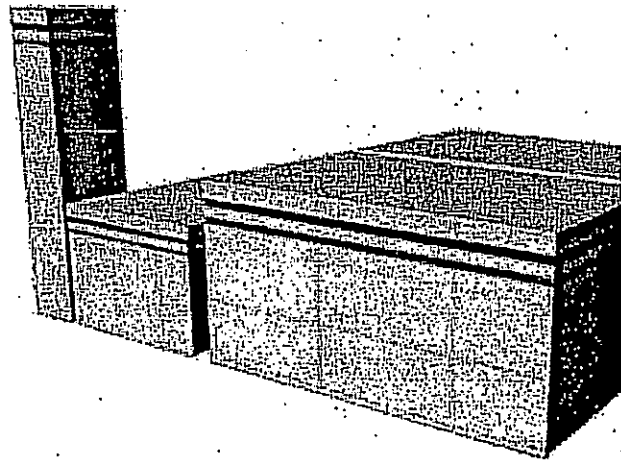


Studios:

- [Main Map](#)
- [Building A](#)
- [Building B](#)
- [Building C](#)
- [Building D](#)
- [Building E](#)
- [Building F](#)
- [Building G](#)
- [Building H](#)
- [Building I](#)
- [Building J](#)
- [Building K](#)
- [Building L](#)
- [Building M](#)
- [Building N](#)
- [Building X](#)

Building B - New June 2001

Building B consists of two sound stages and an adjoining office space with mill space in the rear. Stage B -1 and B-2 are each 15,000 sq. ft. Beside the stages is Building B-3, with over 4,600 sq. ft. of mill/construction space. The office space is 9,100 sq. ft. on two levels, with plenty of private offices and large bullpen areas.



All buildings on the Vancouver Film Studios lot are equipped with 24-hour security, fax, telephone and high-speed Internet capabilities.

Who's Been Here

Download Floorplan

Studio B-1:

Sq. Ft.	Dimensions	Height
15,000	100' x 150'	40'

Sound:

- Acoustical insulation .
- 16' x 16' sound door
- Building acoustically-designed, with tilt-up concrete walls

Power:

- Director's control panels - 4 points
- 40 watts per sq ft
- 3 phase power, serviced from 2 locations within the stage, each with 4 camlocks

Air:

- Mechanical smoke exhaust fans
- Fresh air exchange / heating

Studio B-2:

Sq. Ft.	Dimensions	Height
15,000	100' x 150'	40'

Sound:

- Acoustical insulation
- 16' x 16' sound door
- Building acoustically-designed, with tilt-up concrete walls

Power:

- Director's control panels - 4 points
- 40 watts per sq ft
- 3 phase power, serviced from 2 locations within the stage, each with 4 camlocks

Air:

- Mechanical smoke exhaust fans
- Fresh air exchange / heating

Building B-3:

Sq. Ft.	Dimensions
4,600	59' x 78'

- High Bay Lighting
- Wardrobe/Set Dec Facilities
- Loading Bay
- Lock-up
- Mill space has been renovated to hand construction equip
- Washing machine

Offices:

- 9,100 sq ft
- Boardroom
- 2 Kitchens
- Air Conditioning
- Lock-up
- 20 Private Offices

Structure:

- Cleats
- Protective roll-up doors
- Wooden catwalk system
- Truss system for lights
- Truss load - avg 40lbs/sq ft, max point load 3500 lbs/truss
- Clear span

Structure:

- Cleats
- Protective roll-up doors
- Wooden catwalk system
- Truss system for lights
- Truss load - avg 40lbs/sq ft, max point load 3500 lbs/truss
- Clear span

Production Areas
• Wardrobe / Set De
Facilities

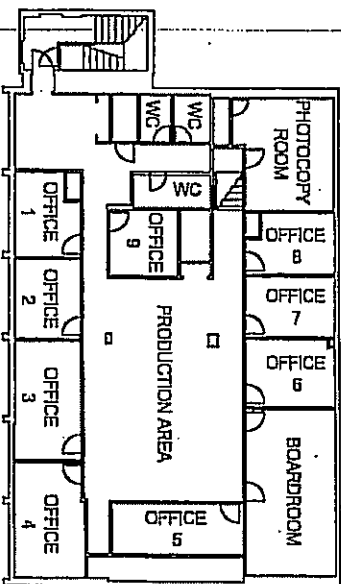


[Home](#) - [About Us](#) - [Studio Info](#) - [The Crew](#) - [Events](#) - [Contact Info](#)

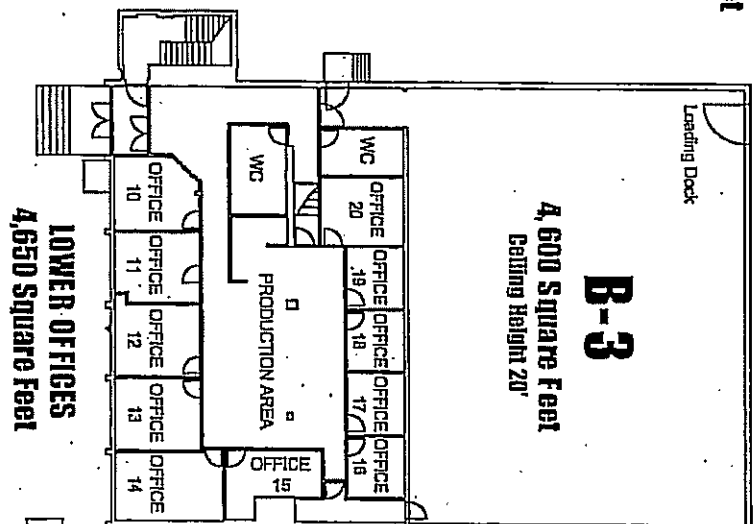
DESIGNED BY  COLBSTER.COM

STUDIOS

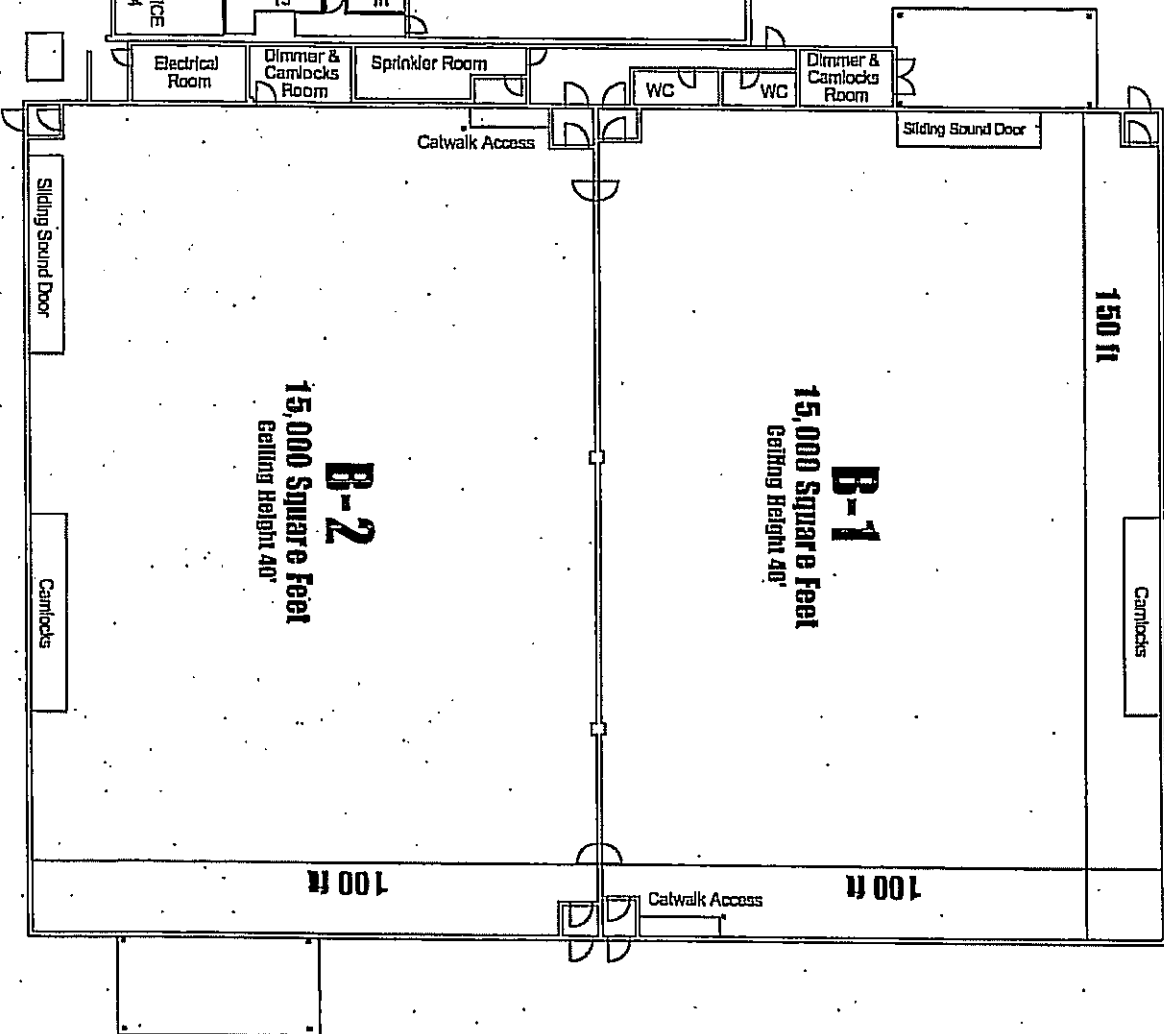
BUILDING B



TOTAL OFFICE SPACE
9,100 Square Feet



LOWER OFFICES
4,650 Square Feet



Vancouver Film Studios
3500 Garbutt Road
Vancouver, BC
Canada V6M 2H5

Telephone: (604) 453-5000
Facsimile: (604) 453-5045