

Take advantage of this unique opportunity to secure a prime location on busy Veterans Boulevard at a signalized intersection just east of the I-10 Veterans exit.

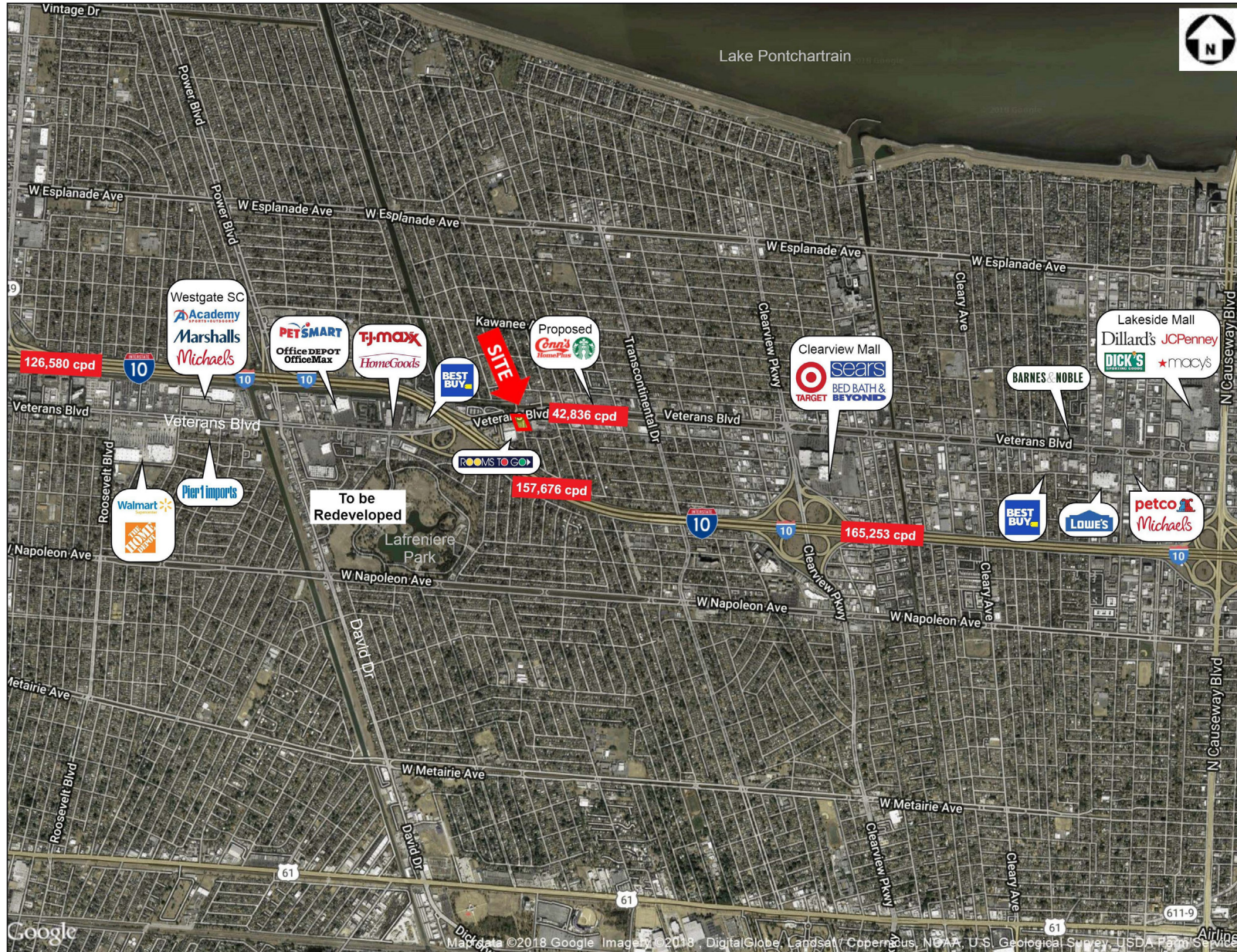
| | |
|-----------------------|--------------------------------|
| LOCATION: | SWQ Veterans Blvd & Roberta St |
| BUILDING SIZE: | 3,000 sf (50' x 60') |
| RENT: | \$50.00 psf |
| EXTRA CHARGE: | \$5.83 psf |
| PARKING: | 14 exclusive spaces |
| TRAFFIC COUNT: | 42,836 CPD - Veterans Blvd |

DEMOGRAPHICS (Est. 2018)

| | <u>1 Mile</u> | <u>3 Mile</u> | <u>5 Mile</u> |
|-------------------------|---------------|---------------|---------------|
| POPULATION: | 20,207 | 137,417 | 250,723 |
| # OF HOUSEHOLDS: | 8,565 | 59,082 | 108,706 |
| AVG HH INCOME: | \$71,605 | \$76,475 | \$80,409 |
| DAYTIME POP: | 6,239 | 75,580 | 164,190 |



JONATHAN FAWER
jfawer@corp-realty.com



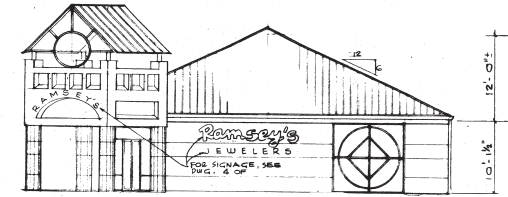
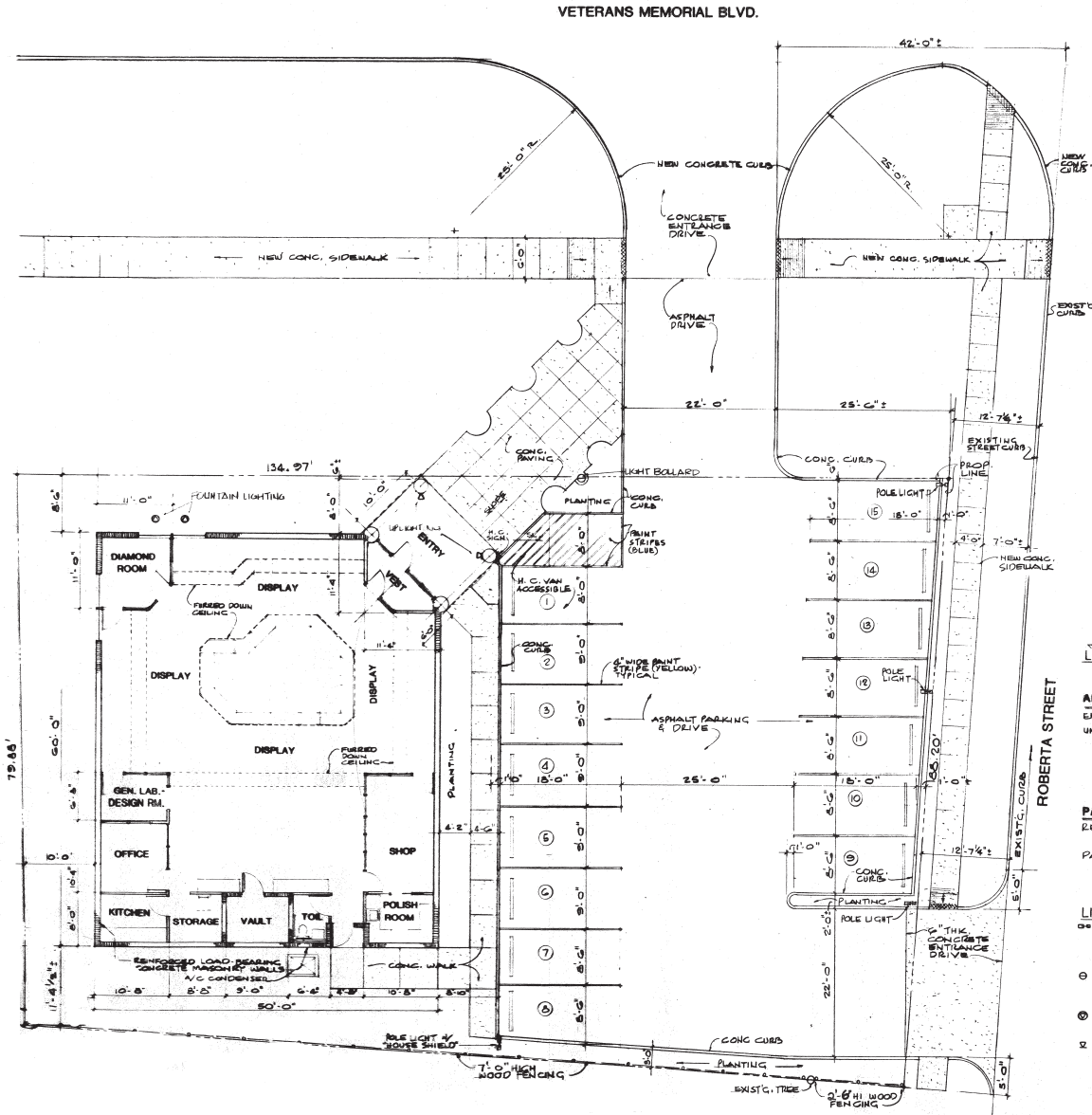


201 St. Charles Avenue, Suite 4411 | New Orleans, LA 70170 | (504) 581-5005 | corp-realty.com

The information contained herein has been obtained from sources that we deem reliable. No representation or warranty is made as to the accuracy thereof, and it is submitted subject to errors, omissions, change of price, or other conditions, or withdrawal without notice. Licensed in Louisiana. 11/18



201 St. Charles Avenue, Suite 4411 | New Orleans, LA 70170 | **(504) 581-5005** | corp-realty.com



VETERANS MEMORIAL BLVD. (NORTH) ELEVATION SCALE: 1/8" = 1'-0"

COMMERCIAL PARKWAY OVERLAY ZONE (CPZ)
PLANNING DEPARTMENT CERTIFICATION

DOCKET / NAME CPZ14-93 Ramsey's Jewelers
LOCATION Sg 39 Wilbanks Section 8 Chalmette Blvd.

BASED ON REVIEW COMMENTS FROM THE
LAND USE REVIEW TECHNICAL COMMITTEE
THE PLANNING DEPARTMENT HAS DETERMINED THIS SITE
PLAN MEETS THE REQUIREMENTS AND INTENT OF THE CPZ

[Signature] 6/14/93
EDWIN J. DURAB, DIRECTOR DATE

