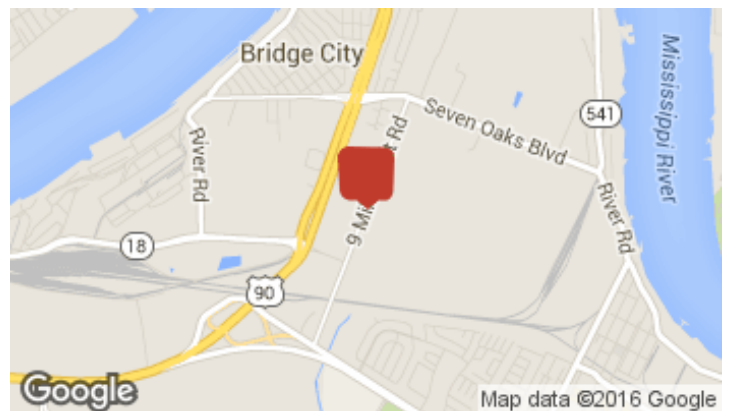
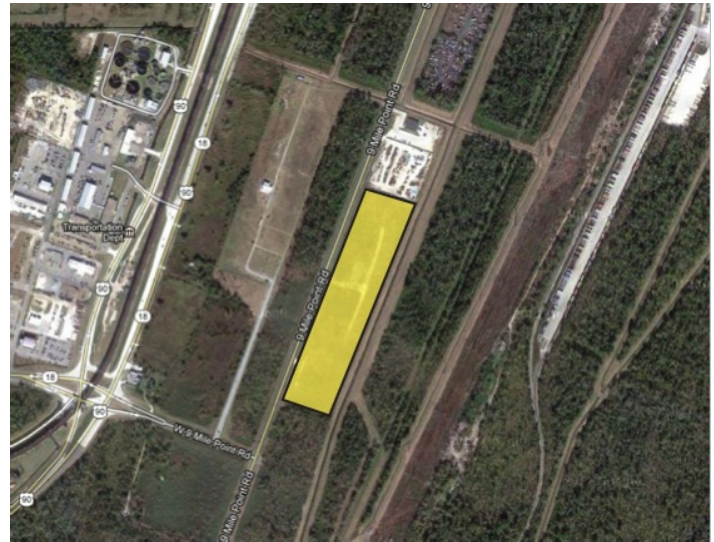


# Build to Suit

## 1700 9 Mile Point Road, Westwego, LA 70094

Listing ID: 29826902  
Status: Active  
Property Type: Vacant Land For Lease  
Possible Uses: Industrial, Office  
Gross Land Area: 12.80 Acres  
Lease Rate: \$0 (Monthly)  
\$0 PSF (Annual)  
Base Monthly Rent: \$0  
Lease Type: Other  
Nearest MSA: New Orleans-Metairie  
County: Jefferson  
Zoning: M-1  
Land Splits Available: Yes



## Property Contacts



### Matthew Grass

Realty Executives SELA - Metairie

504-237-3359 [M]

504-237-3359 [O]

mgrass80@gmail.com