



> PROPERTY OVERVIEW

Outparcels for sale/lease or build to suit. Owner is developing three hotels on the site in the next 18-24 months - with first hotel breaking ground summer 2014. The three hotels combined with the La Quinta, The Holiday Inn and The Courtyard will provide the immediate area with close to 700 new hotel rooms by 2016.

> AVAILABLE

- 4.20 Acres

> NEARBY LANDMARKS

- Oakwood Center - includes Sears, Dillard's, JCPenney, Dick's Sporting Goods, Old Navy, ULTA Beauty, dressbarn, Forever 21, and many more
- Holiday Inn
- IHOP
- La Quinta Inn & Suites
- Crescent City Connection

www.StirlingProperties.com

Joe Gardner

[office] 504-523-4481
[direct] 504-620-8140
jgardner@stirlingprop.com

Dan Tate

[office] 504-523-4481
[direct] 504-620-8132
dtate@stirlingprop.com

The foregoing is solely for information purposes and is subject to change without notice. Stirling Properties makes no representations or warranties regarding the properties or information herein including but not limited to any and all images pertaining to these properties. It is the obligation of each purchaser/lessee to investigate the condition and attributes of the properties and to verify the accuracy of the foregoing information to the extent such purchaser/lessee deems necessary. Also subject to errors, omissions, changes in terms and conditions, prior sale, lease or withdrawal, without notice. 05/14



Joe Gardner

[office] 504-523-4481
[direct] 504-620-8140
jgardner@stirlingprop.com

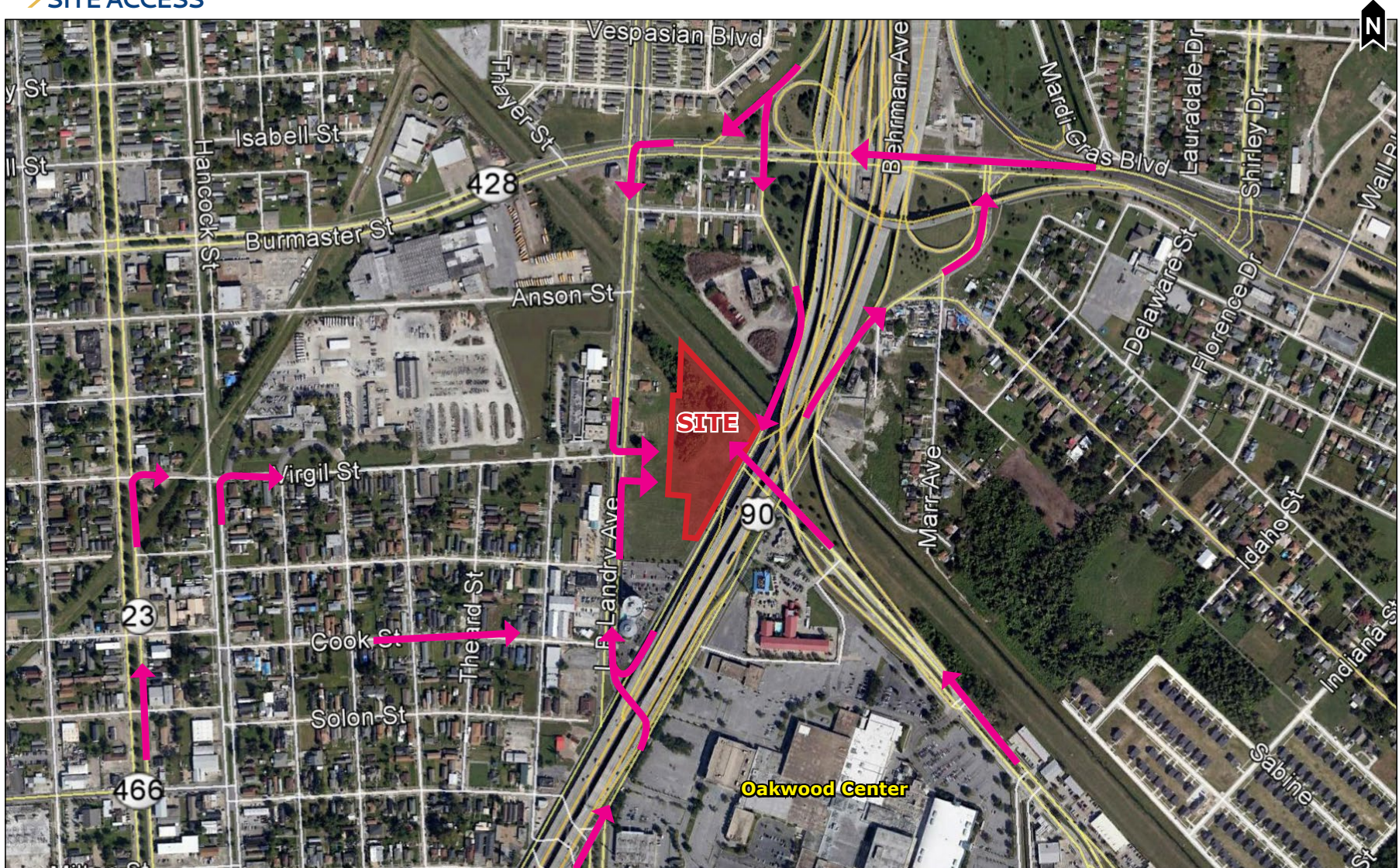
Dan Tate

[office] 504-523-4481
[direct] 504-620-8132
dtate@stirlingprop.com

www.StirlingProperties.com

The foregoing is solely for information purposes and is subject to change without notice. Stirling Properties makes no representations or warranties regarding the properties or information herein including but not limited to any and all images pertaining to these properties. It is the obligation of each purchaser/lessee to investigate the condition and attributes of the properties and to verify the accuracy of the foregoing information to the extent such purchaser/lessee deems necessary. Also subject to errors, omissions, changes in terms and conditions, prior sale, lease or withdrawal, without notice. 05/14

> **SITE ACCESS**



Joe Gardner

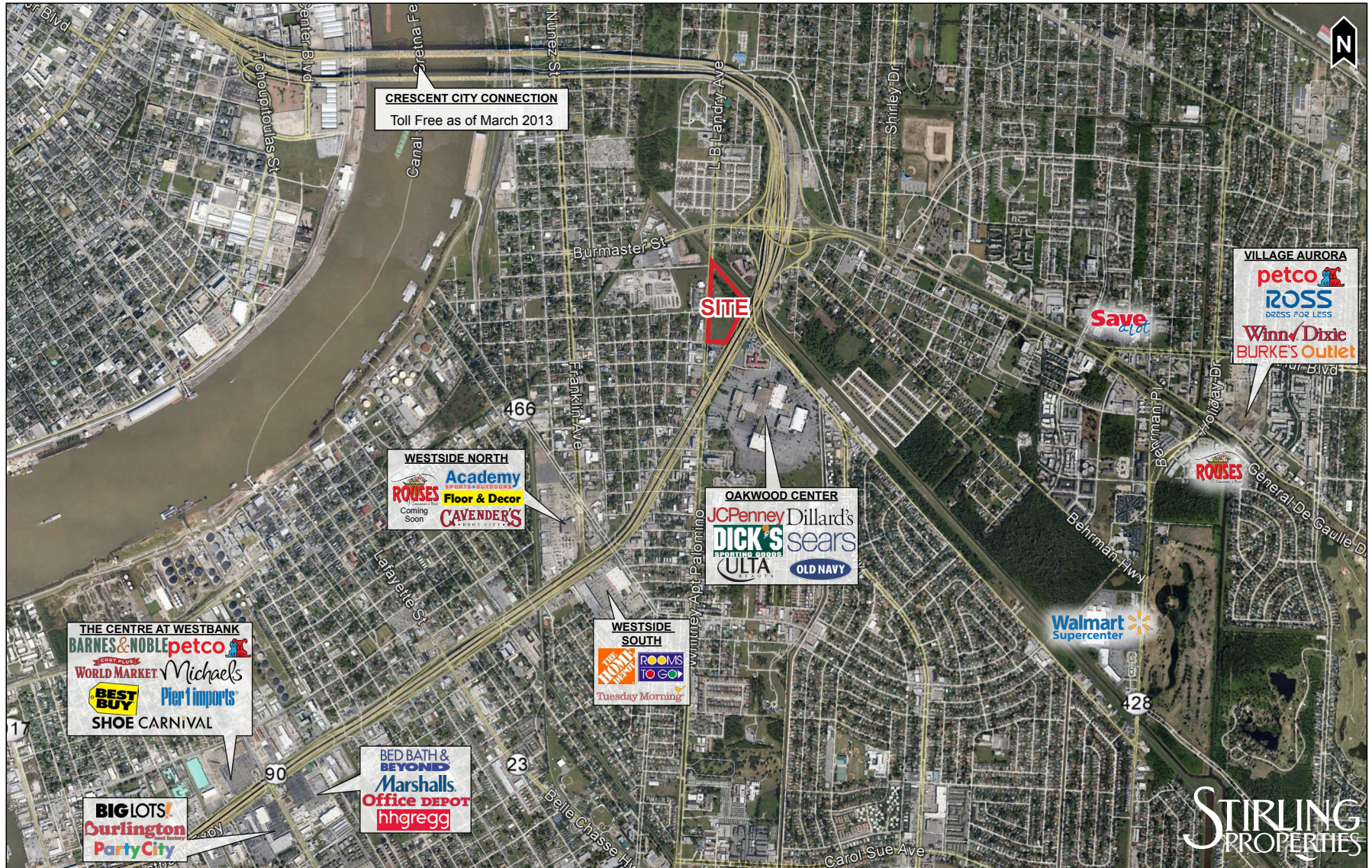
[office] 504-523-4481
[direct] 504-620-8140
jgardner@stirlingprop.com

Dan Tate

[office] 504-523-4481
[direct] 504-620-8132
dtate@stirlingprop.com

www.StirlingProperties.com

The foregoing is solely for information purposes and is subject to change without notice. Stirling Properties makes no representations or warranties regarding the properties or information herein including but not limited to any and all images pertaining to these properties. It is the obligation of each purchaser/lessee to investigate the condition and attributes of the properties and to verify the accuracy of the foregoing information to the extent such purchaser/lessee deems necessary. Also subject to errors, omissions, changes in terms and conditions, prior sale, lease or withdrawal, without notice. 05/14



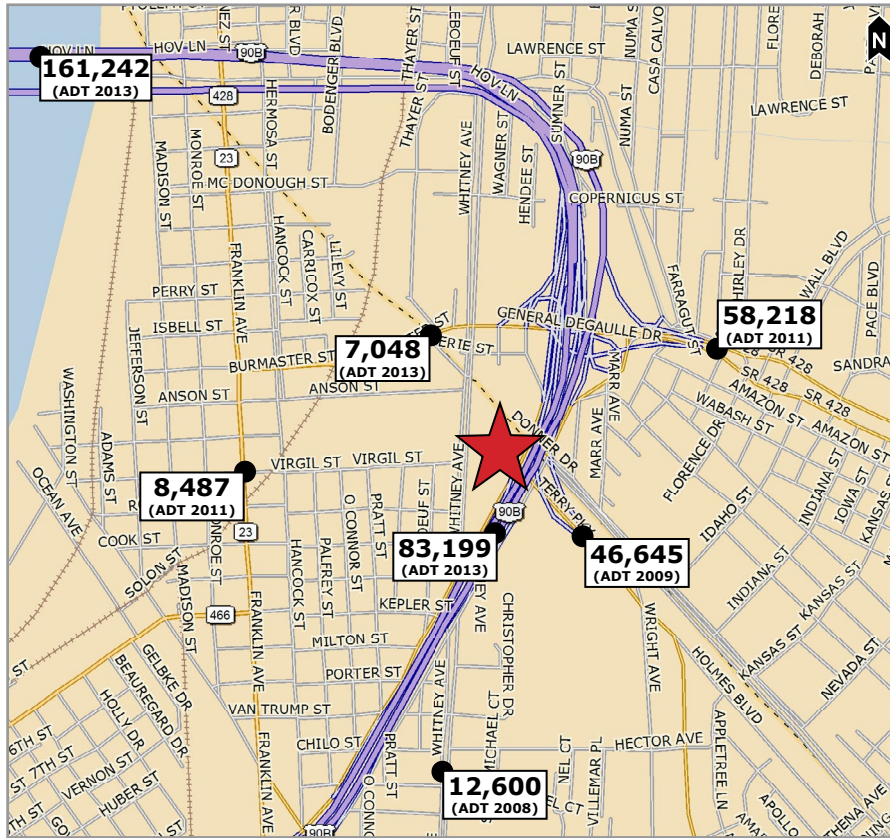
Joe Gardner

[office] 504-523-4481
 [direct] 504-620-8140
 jgardner@stirlingprop.com

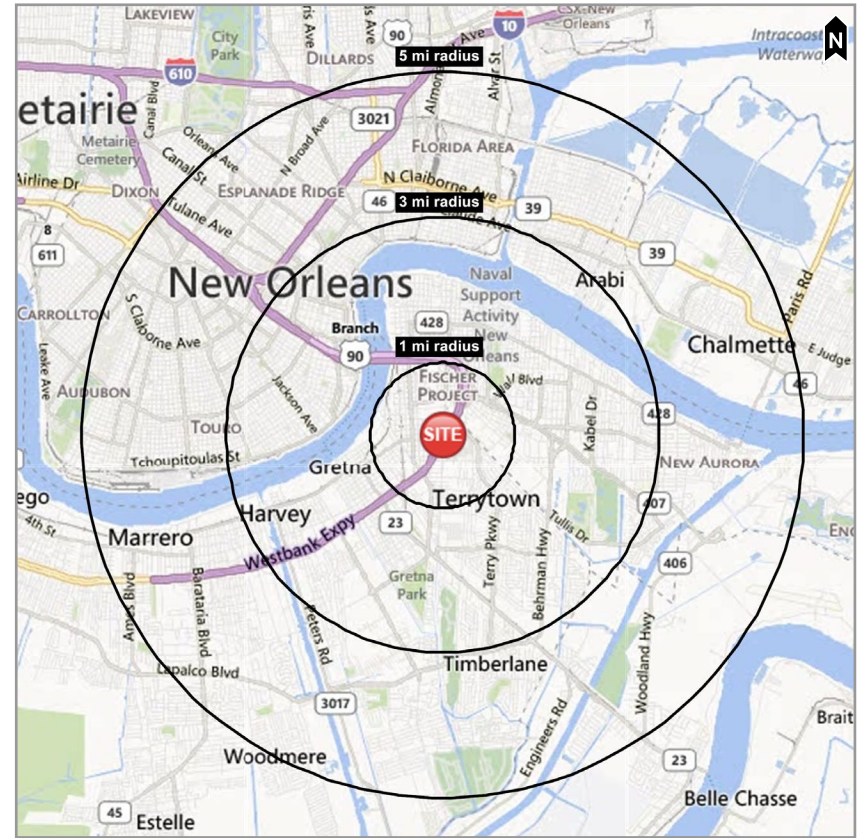
Dan Tate

[office] 504-523-4481
 [direct] 504-620-8132
 dtate@stirlingprop.com

TRAFFIC COUNT MAP



DEMOGRAPHIC MAP



DEMOGRAPHICS - 2013 ESTIMATES

	1 MILE	3 MILE	5 MILE
POPULATION	12,512	131,906	328,660
AVG. HOUSEHOLD INCOME	\$42,077	\$62,485	\$61,949

Joe Gardner

[office] 504-523-4481
[direct] 504-620-8140
jgardner@stirlingprop.com

Dan Tate

[office] 504-523-4481
[direct] 504-620-8132
dtate@stirlingprop.com