

VACANT LAND NEAR LOUIS ARMSTRONG INTERNATIONAL AIRPORT

Kenner, LA 70062

Adjacent to rail line with access to Airline Hwy, I-10, I-310, River Road, and New Orleans Airport. Land includes undeveloped street right-of-way along property line.

Gross Land Area:

Approx. 2.77 acres
(120,766 sf)

Zoning:

L-1 (Light Industrial)

Price: \$376,000

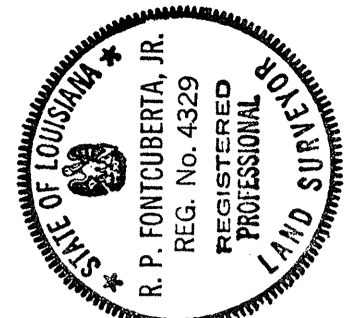
Contact:

Randal Pick

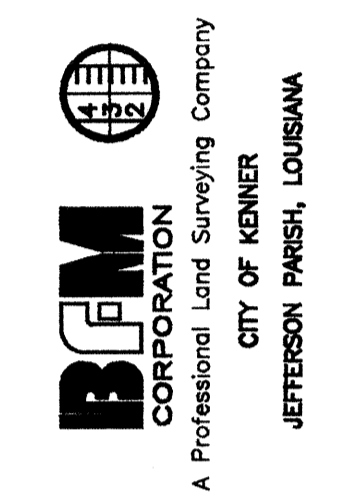
504-655-1777

SALE BY OWNER





R. P. Fontcuberta, Jr.
REGISTERED PROFESSIONAL LAND SURVEYOR



SURVEY OF ARPENT LOTS 255, 256, 257, 258 & 265 AND PORTIONS OF ARPENT LOTS 211, 212, 226, 227, 228, 229, 230, 231, 232, 233, 234, 259 & 264
CITY OF KENNER, JEFFERSON PARISH, LA.

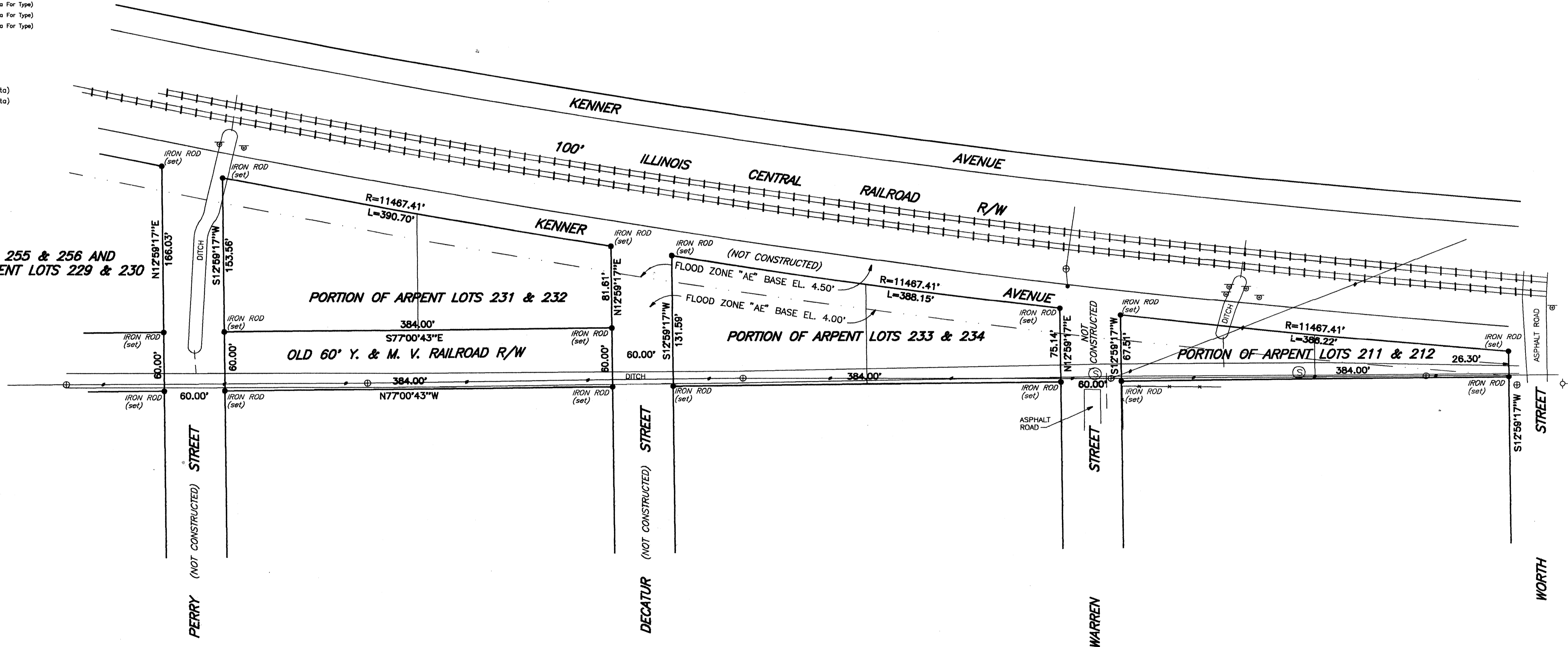
MARK	DESCRIPTION	DATE	BY

SCALE: 1" = 60'
DATE: APRIL 19, 1995
DRAWN BY: R.W.K. CHECKED BY: E.W.P.
DRAWING NO. F-2099
COMPUTER NO. F004-082
SHEET 1 OF 2

LEGEND

- BUILDING
- BASELINE
- EXISTING RIGHT OF WAY
- CATCH BASIN
- CULVERT
- DROP INLET, DRAIN LINE
- DROP INLET, DRAIN LINE
- COMMUNICATIONS MANHOLE, COMM. LINE
- DRAIN MANHOLE, DRAIN LINE
- ELECTRICAL MANHOLE, ELEC. LINE
- GAS MANHOLE, GAS LINE
- SEWER MANHOLE, SEWER LINE
- TELEPHONE MANHOLE, TELE. LINE
- TRAFFIC MANHOLE, TRAFFIC LINE
- WATER MANHOLE, WATER LINE
- UTILITY POLE / OVERHEAD LINES
- ELEC. TOWER / OVERHEAD LINES
- UTILITY BOX (See Sidedata For Type)
- UTILITY CLEANOUT (See Sidedata For Type)
- UTILITY INTERFACE (See Sidedata For Type)
- UTILITY METER (See Sidedata For Type)
- UTILITY PEDESTAL (See Sidedata For Type)
- UTILITY VALVE (See Sidedata For Type)
- FIRE HYDRANT
- LIGHT STANDARD
- TRAFFIC LIGHT
- ANCHOR
- SIGN
- MISCELLANEOUS (See Sidedata)
- MISCELLANEOUS (See Sidedata)
- RESIDENTIAL MAILBOX
- TREE
- BUSH
- HEDGE
- FENCE

ARPENT LOTS 255 & 256 AND PORTION OF ARPENT LOTS 229 & 230



The Servitudes and Restrictions shown on this survey are limited to those set forth in the description furnished us and there is no representation that all applicable Servitudes and Restrictions are shown hereon. The surveyor has made no title search or public record search in compiling the data for this survey.

I have consulted the Federal Insurance Administration Flood Hazard Boundary Maps and found this property is in a Special Flood Hazard Area.

F. I. A. ZONE "AE"
BASE EL. 4.0' AND 4.5' NGVD

PHOTO 1: Vacant Land near Louis Armstrong International Airport



PHOTO 2: Vacant Land near Louis Armstrong International Airport



PHOTO 3: Vacant Land near Louis Armstrong International Airport



PHOTO 4: Vacant Land near Louis Armstrong International Airport



PHOTO 5: Vacant Land near Louis Armstrong International Airport

