

SITE PLAN GENERAL NOTES

1. PARKING SPACES ARE 20'-0" X 8'-6" TYP. FOR ADA SPACES SEE DETAIL XXXX. TYP. AISLE WIDTH 24'-0" UNLESS OTHERWISE NOTED AND DIMENSIONED.
2. SIDEWALK SLOPING IS REPRESENTATIVE OF MINIMUM DESIRED PATTERN. SEE CIVIL FOR LOCATIONS AND SPACING OF EXPANSION JOINTS AND CONTROL JOINTS.
3. SEE CIVIL FOR PAVEMENT JOINTS, TYP.

SITE PLAN KEY NOTES

Per: ADD
Rev: 5.038 delete

PARKING SPACES

NO	DATE	DESCRIPTION
NICOLLE BLVD LOT	78	
CHURCHILL PARKWAY LOT	163	

REVISIONS:

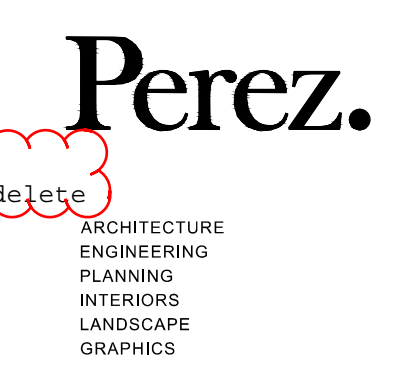
NO	DATE	DESCRIPTION
1	08.04.11	ADDENDUM No.2

DATE: 07.08.11
PROJECT NO: 4479.000

DRAWN BY: MJR, DB, LK
CHECKED BY: MJR
SHEET TITLE:

BASE BID & ALT 1 SITE PLAN
SHEET NO:

G1.02



PEREZ
A PROFESSIONAL CORPORATION
317 BURGUNDY STREET, SUITE 11
NEW ORLEANS, LA 70112
WWW.PEREZ.COM



VergesRome
Architects

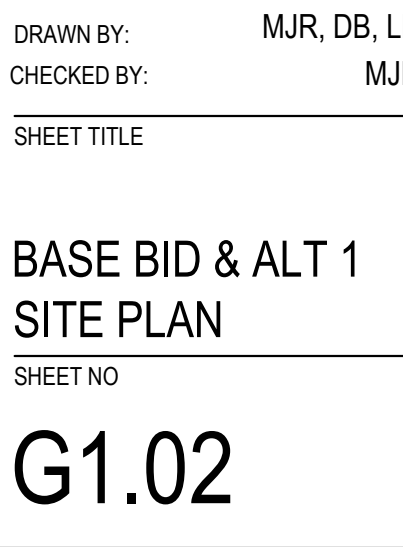
VERGESROME ARCHITECTS
A PROFESSIONAL ARCHITECTURAL CORPORATION
325 N. CARROLLTON AVE., SUITE 100
NEW ORLEANS, LA 70119
WWW.VERGESROME.COM



PATRICK F. TAYLOR
SCIENCE & TECHNOLOGY REGIONAL ACADEMY
701 CHURCHILL PARKWAY
AVONDALE, LA 70094
100% CONSTRUCTION DOCUMENTS

CLIENT PROJECT NO. 2008-27A

1 ALTERNATE 1 SITE PLAN
1"-40'-0"





FUTURE GYMNASIUM SITE
SEE CIVIL AND LANDSCAPE FOR WORK

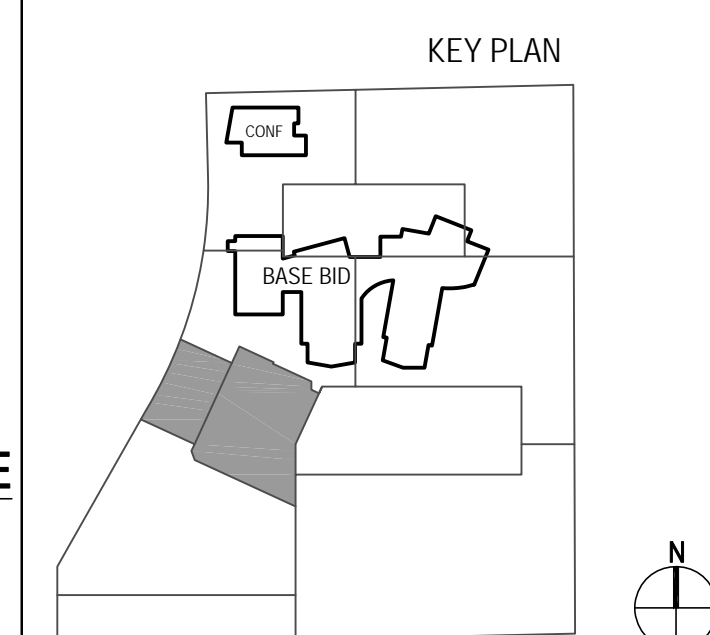
SITE PLAN GENERAL NOTES

1. PARKING SPACES ARE 20'-0" X 8'-6" TYP. FOR ADA SPACES SEE DETAIL XXXX-X. TYP. AISLE WIDTH 24'-0" UNLESS OTHERWISE NOTED AND DIMENSIONED.
2. SIDEWALK SLOPING IS REPRESENTATIVE OF MINIMUM DESIRED PATTERN. SEE CIVIL FOR LOCATIONS AND SPACING OF EXPANSION JOINTS AND CONTROL JOINTS.
3. SEE CIVIL FOR PAVEMENT JOINTS, TYP.

SITE PLAN KEY NOTES

- 1 CONCRETE WALL, 1'-6" H X 1'-0" W
- 2 REQUIRED EGRESS
- 3 RAIN GARDEN
- 4 PLANTER
- 5 LANDING
- 6 C.I.P. RAMP
- 7 HANDRAILS
- 8 GUARDRAIL
- 9 FIRE HYDRANT
- 10 SIDE WALK
- 11 4" WIDE PAINTED STRIPE
- 12 PAINTED TRAFFIC ARROW
- 13 ROLL OVER CURB
- 14 EXPANSION JOINT
- 15 PAINTED HANDICAP SYMBOL
- 16 HANDICAP PARKING SIGN, POST MOUNTED
- 17 HANDICAP PARKING SIGN, BLDG. MOUNTED
- 18 HANDICAP RAMP
- 19 EXISTING CURB CUT AND DRIVEWAY APRON
- 20 CMU WALL W/ PRECAST CAP.
- 21 CMU PLANTER WALL W/ PRECAST CAP
- 22 TRENCH DRAIN
- 23 C.I.P. CONCRETE DOWNSPOUT SPLASH BOWL
- 24 _____
- 25 CONCRETE TIERED SEATING
- 26 DROP INLET
- 27 COLUMNS (STEEL)
- 28 C.I.P. CONCRETE COLUMN
- 29 TRUNCATED DOME TACTILE WARNING
- 30 PIPE BOLLARD
- 31 PAINTED CURB
- 32 EXISTING FENCE
- 33 SUNDIAL
- 34 BIO SWALES
- 35 TRANSFORMER PAD
- 36 DOWNSPOUT W/ DOWNSPOUT BOOT AND DROP INLET
- 37 LIGHT POST
- 38 GREASE INTERCEPTOR
- 39 CABLE PULL BOX
- 40 ALUMINUM CANOPY
- 41 7" CONCRETE

PARKING SPACES	
NICOLLE BLVD LOT	78
CHURCHILL PARKWAY LOT	163



1 PARTIAL BASE BID SITE PLAN - HARDSCAPE
1'-10"-0"

Perez.

ARCHITECTURE
ENGINEERING
PLANNING
INTERIORS
LANDSCAPE
GRAPHICS
PEREZ A PROFESSIONAL CORPORATION
317 BURGUNDY STREET, SUITE 11
NEW ORLEANS, LA 70112
WWW.PEREZ.COM



VergesRome
Architects

VERGESROME ARCHITECTS
A PROFESSIONAL ARCHITECTURAL CORPORATION
320 N. CARROLLTON AVE. SUITE 100
NEW ORLEANS, LA 70119
WWW.VERGESROME.COM



PATRICK F. TAYLOR
SCIENCE & TECHNOLOGY REGIONAL ACADEMY

701 CHURCHILL PARKWAY
AVONDALE, LA 70094

100% CONSTRUCTION DOCUMENTS

CLIENT PROJECT NO. 2008-27A

DATE: 07.08.11
PROJECT NO: 4479.000

REVISIONS:	
NO	DESCRIPTION

DRAWN BY: MJR, DB, LK
CHECKED BY: MJR
SHEET TITLE

PARTIAL SITE PLAN
BASE BID

SHEET NO

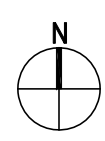
G1.10

NICOLLE BOULEVARD

CHURCHILL PARKWAY



1 LIFE SAFETY SITE PLAN - BASE BID + ALT 1 + ALT 2
1/16"=1'-0"



LS1.2

DATE: 07.08.11
PROJECT NO: 4479.000

REVISIONS:

NO	DATE	DESCRIPTION

DRAWN BY: CP, JM, JJS, QO, LK, ER
CHECKED BY: CP, MJR

SHEET TITLE
LIFE SAFETY PLAN
SITE PLAN
BASE BID + ALT 1
SHEET NO

PATRICK F. TAYLOR
SCIENCE & TECHNOLOGY REGIONAL ACADEMY
701 CHURCHILL PARKWAY
AVONDALE, LA 70094
100% CONSTRUCTION DOCUMENTS

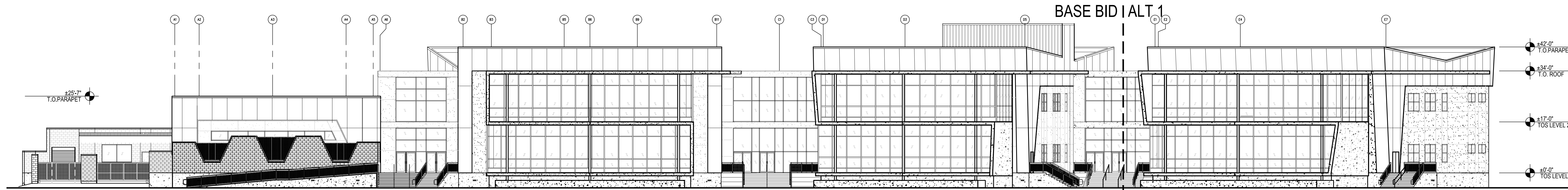
CLIENT PROJECT NO. 2008-27A

Perez.
ARCHITECTURE
ENGINEERING
PLANNING
INTERIORS
LANDSCAPE
GRAPHICS
PEREZ
A PROFESSIONAL CORPORATION
317 BURGUNDY STREET, SUITE 11
NEW ORLEANS, LA 70112
WWW.PEREZ.COM

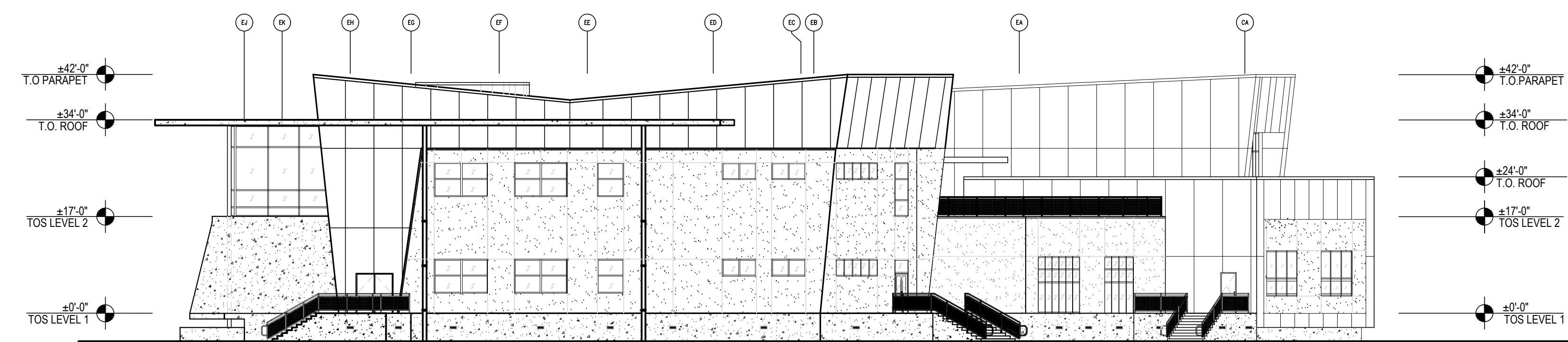


VergesRome
Architects
VERGESROME ARCHITECTS
A PROFESSIONAL ARCHITECTURAL CORPORATION
325 N. CARROLLTON AVE, SUITE 100
NEW ORLEANS, LA 70119
WWW.VERGESROME.COM

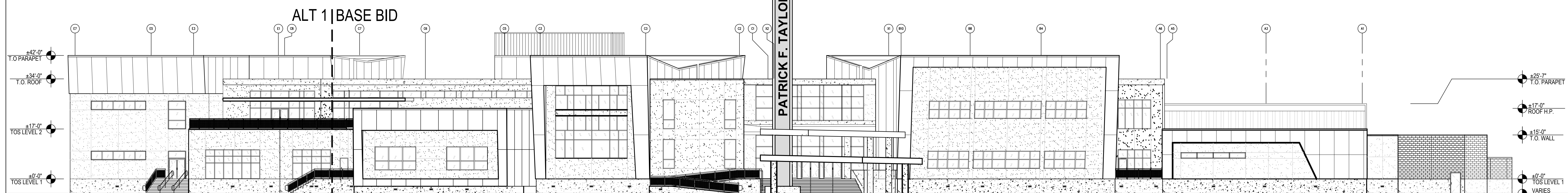




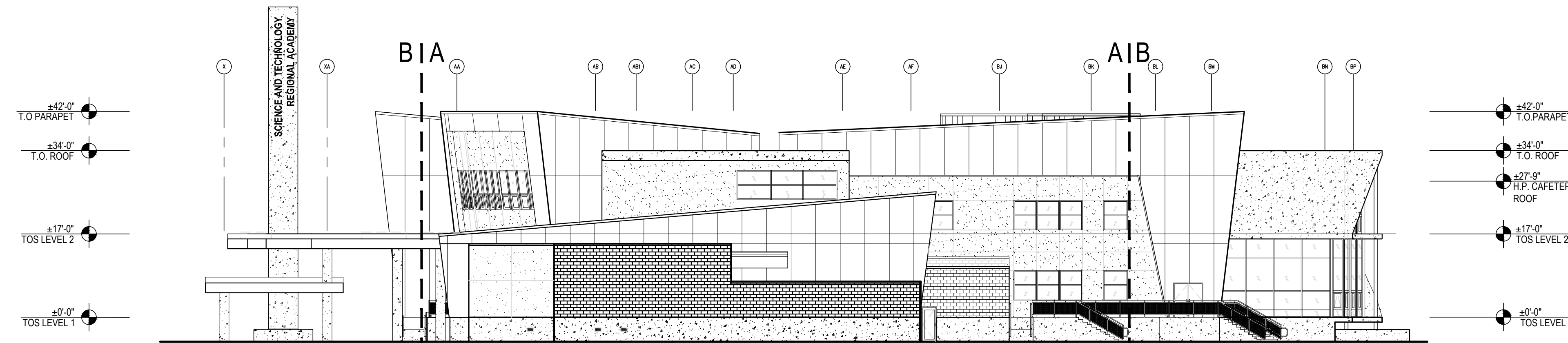
1 SOUTH ELEVATION
1/16"=1'-0"



2 EAST ELEVATION
1/16"=1'-0"



3 NORTH ELEVATION
1/16"=1'-0"



4 WEST ELEVATION/SECTION
1/16"=1'-0"

ELEVATION KEY NOTES (XX)

1. CAST IN PLACE CONCRETE
2. STUCCO
3. METAL COMPOSITE WALL SYSTEM 5' WIDE UNLESS OTHERWISE NOTED PANEL REFER TO SPECS
4. CONCRETE WALL
5. CONCRETE CANOPY, SEE STRUCTURAL
6. STAINLESS STEEL GATE
7. METAL BRACKET
8. DOWNSPOUT
9. INTERNA-RAIL WITH PERFORATED INFILL, HAND AND GUARD RAIL SYSTEM
10. 24" ROUND CONCRETE COLUMN
11. STUCCO JOINT
12. STANDING SEAM METAL ROOF
13. CONCRETE CAP
14. STAINLESS STEEL LETTER
15. NOT USED
16. ENTRY CANOPY, (SEE SHEET BA6.10)
17. CONCRETE PLANTERS
18. POLISHED MASONRY UNITS
19. EXPANSION JOINT
20. WATERWALL
21. METAL COPING CAP
22. CANTILEVERED CPI CANOPY (AT GYM)
23. SLIDING GATE
24. INTERNA-RAIL WITH PERFORATED INFILL SYSTEM
25. MONUMENTAL SIGNAGE REFER TO BA3.7
26. METAL GUTTER
27. MASONRY CONTROL JOINTS
28. PROFILE SERIES METAL WALL PANEL SYSTEM
29. AC UNIT, (SEE MECHANICAL)
30. 8" X 16" LOUVERED METAL FOUNDATION VENT W/ BUG SCREEN
31. POLYCARBONATE SLOPED GLAZING SYSTEM, REFER TO 4/BA5.2
32. EXPOSED BEAMS, SEE STRUCTURAL
33. METAL SOFFIT, SEE SECTIONS FOR DETAILS
34. PARAPET OPENING, SEE PLAN
35. 24"H x 24" W ACCESS PANEL, SEE STRUCTURAL FOR LOCATIONS
36. 24"H x 30"W ACCESS OPENING, SEE STRUCTURAL FOR LOCATIONS
37. ARCHITECTURAL LOUVER SEE MECHANICAL DRAWINGS
38. OVERFLOW SCUPPER INTO D.S. ONTO SPLASHBLOCK ALL S.S.
39. 16" X 16" CMU PIER
40. ROOF LINE REFER TO ROOF PLAN
41. METAL FASCIA REFER TO ROOF DETAILS

Perez.

ARCHITECTURE
ENGINEERING
PLANNING
INTERIORS
LANDSCAPE
GRAPHICS

Perez
A PROFESSIONAL CORPORATION
317 BURGUNDY STREET, SUITE 11
NEW ORLEANS, LA 70112
WWW.PEREZ.COM



VergesRome
Architects

VERGESROME ARCHITECTS
A PROFESSIONAL ARCHITECTURAL CORPORATION
300 N. CARROLLTON AVE. SUITE 100
NEW ORLEANS, LA 70119
WWW.VERGESROME.COM



PATRICK F. TAYLOR
SCIENCE & TECHNOLOGY REGIONAL ACADEMY

701 CHURCHILL PARKWAY
AVONDALE, LA 70094
100% CONSTRUCTION DOCUMENTS

CLIENT PROJECT NO. 2008-27A

DATE: 07.08.11
PROJECT NO: 4479.000

REVISIONS:		
NO	DATE	DESCRIPTION
1	03.25.11	PERMIT

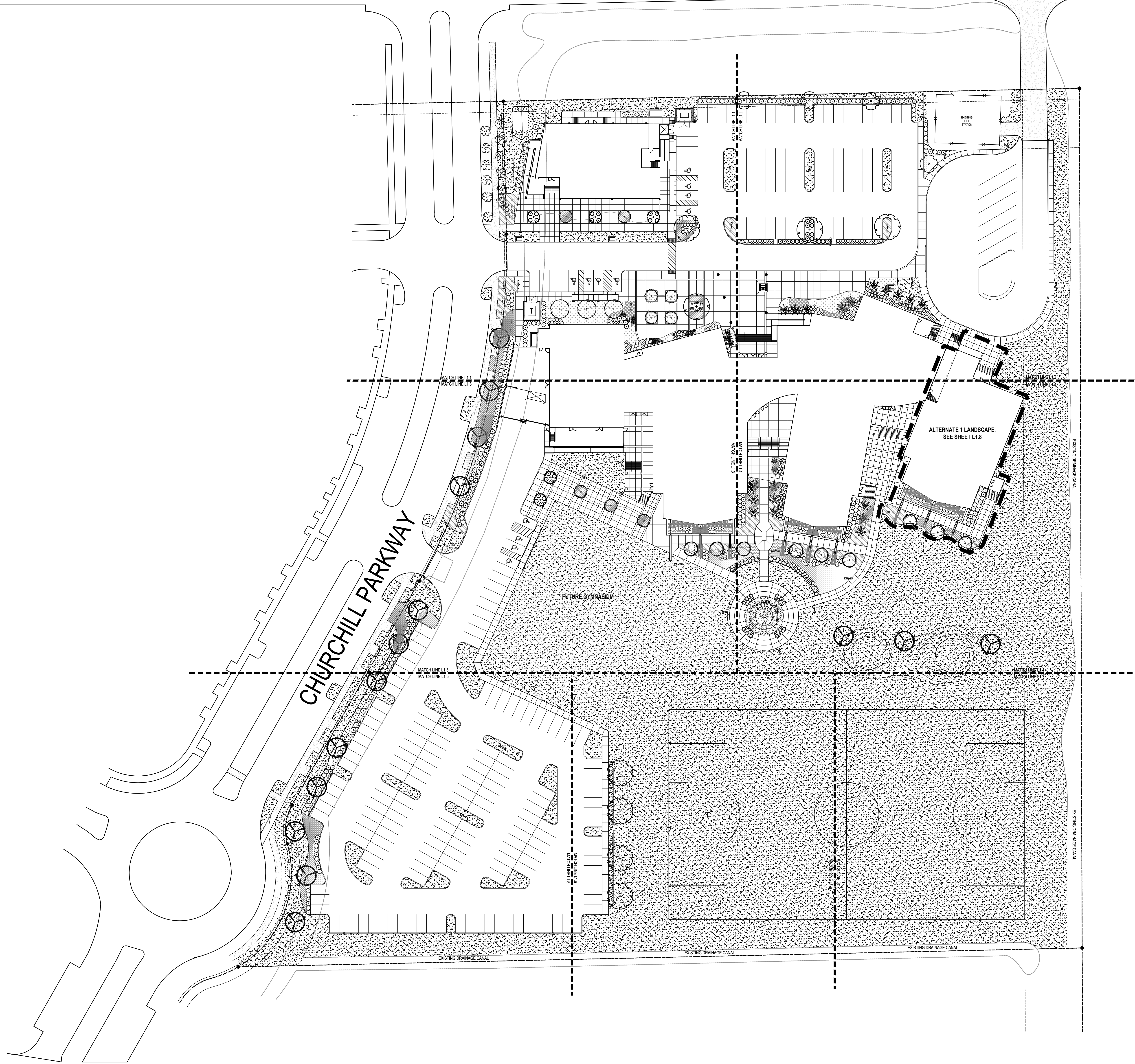
DRAWN BY: OQ
CHECKED BY: WK/CP
SHEET TITLE

EXTERIOR ELEVATIONS
SHEET NO

A3.1

NICOLLE BOULEVARD

CHURCHILL PARKWAY



LEGEND

- 2"-4" MAXIMUM SIZE RIVER ROCK (GRAY). SEE NOTE #15 ON SHEET L2.0
- BAMBOO PALM (CM)
- SABAL PALM (SP)
- ILEX NELLIE R. STEVENS (IN)
- AMERICAN HORNBEAM (CC)
- BALD CYPRESS (TD)
- RIVER BIRCH (BN)
- ALLEE LACEBARK ELM (UP)
- RED MAPLE (AR)
- FATSIA (FJ)
- SWEET VIBURNUM (VO)
- COMPACT INKBERRY (IG)
- INDIAN HAWTHORN (RI)
- CAST IRON PLANT (AE)
- RUBY LOROPETALUM (LC)
- CHINESE MAHONIA (MF)
- FLORIDA ANISE (IF)
- SUNNY KNOCKOUT ROSE (RR)
- LITTLE HENRY SWEETSPIRE (IV)
- BLUE PACIFIC JUNIPER (JH)
- MUHLY GRASS (MC)
- WEEPING SEDGE (CP)
- SOFT RUSH (JE)
- SPARTINA (SB)
- YELLOW FLAG IRIS (IP)
- LOUISIANA IRIS (LI)
- FIREPOWER NANDINA (ND)
- RUBY STELLA DAYLILY (HR)

FOR COMPLETE PLANT LIST AND NOTES SEE SHEET L 2.0 PLANT SCHEDULE.

FOR LANDSCAPE DETAILS SEE SHEET L 2.1 LANDSCAPE DETAILS.

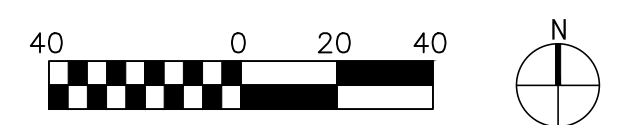
DATE: 06.30.10
PROJECT NO: 4479.000

REVISIONS:		
NO	DATE	DESCRIPTION
1	03.25.11	PERMIT

DRAWN BY: CJC
CHECKED BY: GBA
SHEET TITLE:

OVERALL
LANDSCAPE PLAN
SHEET NO.

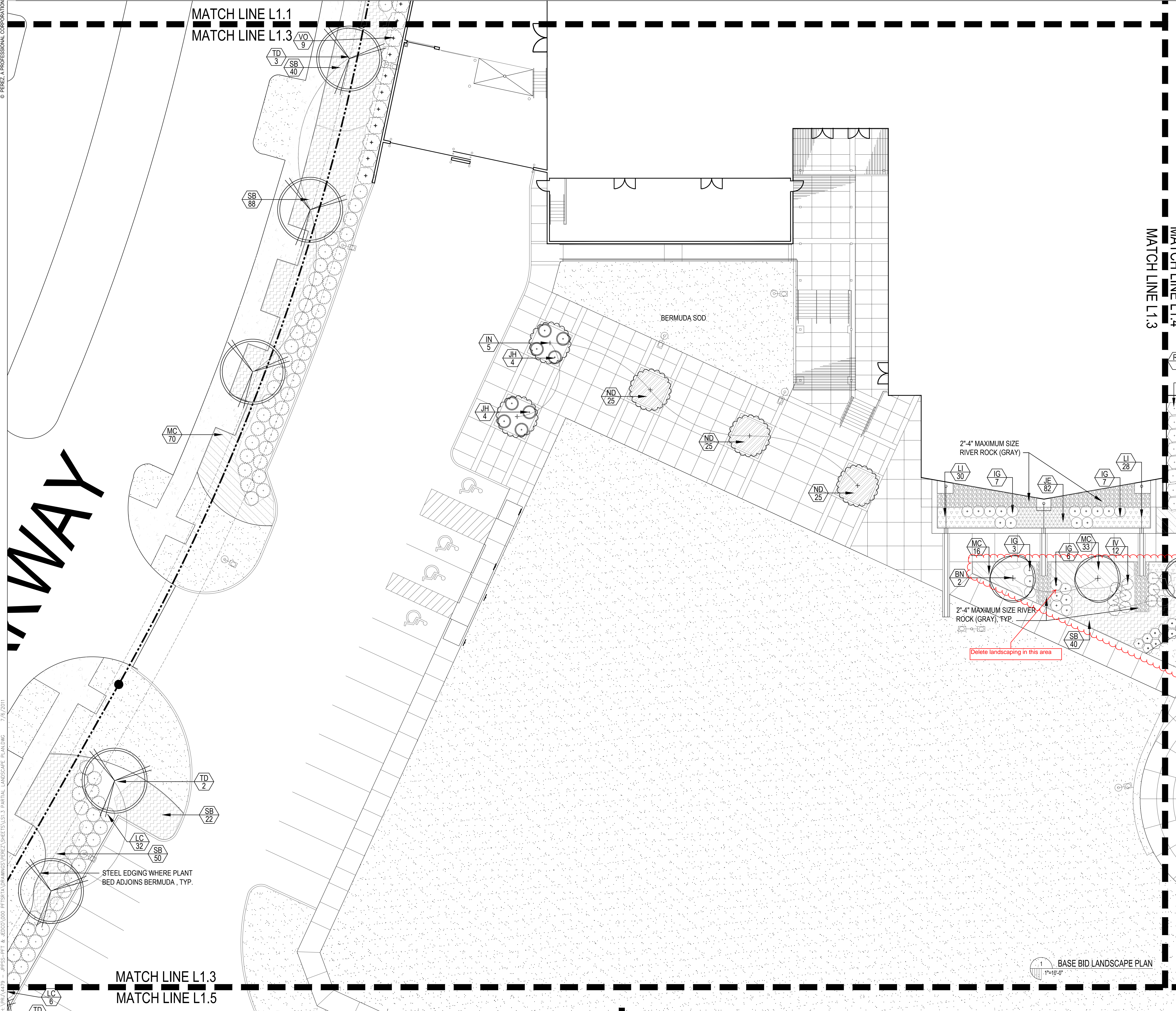
L1.0



MATCH LINE L1.1
MATCH LINE L1.3

DRIVEWAY

MATCH LINE L1.3
MATCH LINE L1.5



LEGEND

- 2"-4" MAXIMUM SIZE RIVER ROCK (GRAY), SEE NOTE #15 ON SHEET L2.0
- BAMBOO PALM (CM)
- SABAL PALM (SP)
- ILEX NELLIE R. STEVENS (IN)
- AMERICAN HORNBEAM (CC)
- BALD CYPRESS (TD)
- RIVER BIRCH (BN)
- ALLEE LACEBARK ELM (UP)
- RED MAPLE (AR)
- FATSIA (FJ)
- SWEET VIBURNUM (VO)
- COMPACT INKBERRY (IG)
- INDIAN HAWTHORN (RI)
- CAST IRON PLANT (AE)
- RUBY LOROPETALUM (LC)
- CHINESE MAHONIA (MF)
- FLORIDA ANISE (IF)
- SUNNY KNOCKOUT ROSE (RR)
- LITTLE HENRY SWEETSPIRE (IV)
- BLUE PACIFIC JUNIPER (JH)
- MUHLI GRASS (MC)
- WEeping SEDGE (CP)
- SOFT RUSH (JE)
- SPARTINA (SB)
- YELLOW FLAG IRIS (IP)
- LOUISIANA IRIS (LI)
- FIREPOWER NANDINA (ND)
- RUBY STELLA DAYLILY (HR)

FOR COMPLETE PLANT LIST AND NOTES SEE SHEET L 2.0 PLANT SCHEDULE.

FOR LANDSCAPE DETAILS SEE SHEET L 2.1 LANDSCAPE DETAILS.

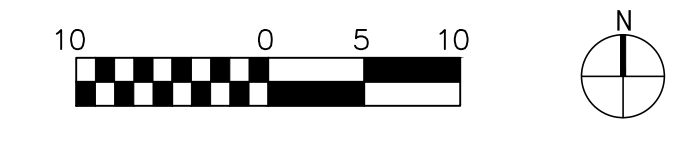
2"-4" MAXIMUM SIZE RIVER ROCK (GRAY)

2"-4" MAXIMUM SIZE RIVER ROCK (GRAY), TYP.

Delete landscaping in this area

MATCH LINE L1.4
MATCH LINE L1.3

1 BASE BID LANDSCAPE PLAN
1"=10'-0"



DATE: 06.30.10
PROJECT NO: 4479.000

REVISIONS:		
NO	DATE	DESCRIPTION
1	03.25.11	PERMIT

DRAWN BY: CJC
CHECKED BY: GBA
SHEET TITLE:

BASE BID LANDSCAPE PLAN
SHEET NO:

CHURCHILL

MATCH LINE L1.3
MATCH LINE L1.5

BERMUDA HYDROSEEDING, TYP.

STEEL EDGING WHERE PLANT BED
ADJOINS BERMUDA, TYP.

MATCH LINE L1.6
MATCH LINE L1.5

BERMUDA HYDROSEEDING, TYP.

EXISTING DRAINAGE CANAL

LEGEND

- 2"-4" MAXIMUM SIZE RIVER ROCK (GRAY), SEE NOTE #15 ON SHEET L2.0
- BAMBOO PALM (CM)
- SABAL PALM (SP)
- ILEX NELLIE R. STEVENS (IN)
- AMERICAN HORNBEAM (CC)
- BALD CYPRESS (TD)
- RIVER BIRCH (BN)
- ALLEE LACEBARK ELM (UP)
- RED MAPLE (AR)
- FATSIA (FJ)
- SWEET VIBURNUM (VO)
- COMPACT INKBERRY (IG)
- INDIAN HAWTHORN (RI)
- CAST IRON PLANT (AE)
- RUBY LOROPETALUM (LC)
- CHINESE MAHONIA (MF)
- FLORIDA ANISE (IF)
- SUNNY KNOCKOUT ROSE (RR)
- LITTLE HENRY SWEETSPIRE (IV)
- BLUE PACIFIC JUNIPER (JH)
- MUHLY GRASS (MC)
- WEEPING SEDGE (CP)
- SOFT RUSH (JE)
- SPARTINA (SB)
- YELLOW FLAG IRIS (IP)
- LOUISIANA IRIS (LI)
- FIREPOWER NANDINA (ND)
- RUBY STELLA DAYLILY (HR)

FOR COMPLETE PLANT LIST AND NOTES SEE SHEET L 2.0 PLANT SCHEDULE.

FOR LANDSCAPE DETAILS SEE SHEET L 2.1 LANDSCAPE DETAILS.

Perez.

ARCHITECTURE
ENGINEERING
INTERIORS
LANDSCAPE
GRAPHICS

PEREZ
A PROFESSIONAL CORPORATION
317 BURGUNDY STREET, SUITE 11
NEW ORLEANS, LA 70112
WWW.PEREZ.COM

VergesRome

Architects

VERGESROME ARCHITECTS
A PROFESSIONAL ARCHITECTURAL CORPORATION
300 N. CARROLLTON AVE., SUITE 100
NEW ORLEANS, LA 70119
WWW.VERGESROME.COM

PATRICK F. TAYLOR
SCIENCE & TECHNOLOGY REGIONAL ACADEMY

701 CHURCHILL PARKWAY
AVONDALE, LA 70094

100% CONSTRUCTION DOCUMENTS

CLIENT PROJECT NO. 2008-27A

DATE: 06.30.10
PROJECT NO: 4479.000

REVISIONS:

NO	DATE	DESCRIPTION
1	03.25.11	PERMIT

DRAWN BY: CJC
CHECKED BY: GBA

SHEET TITLE

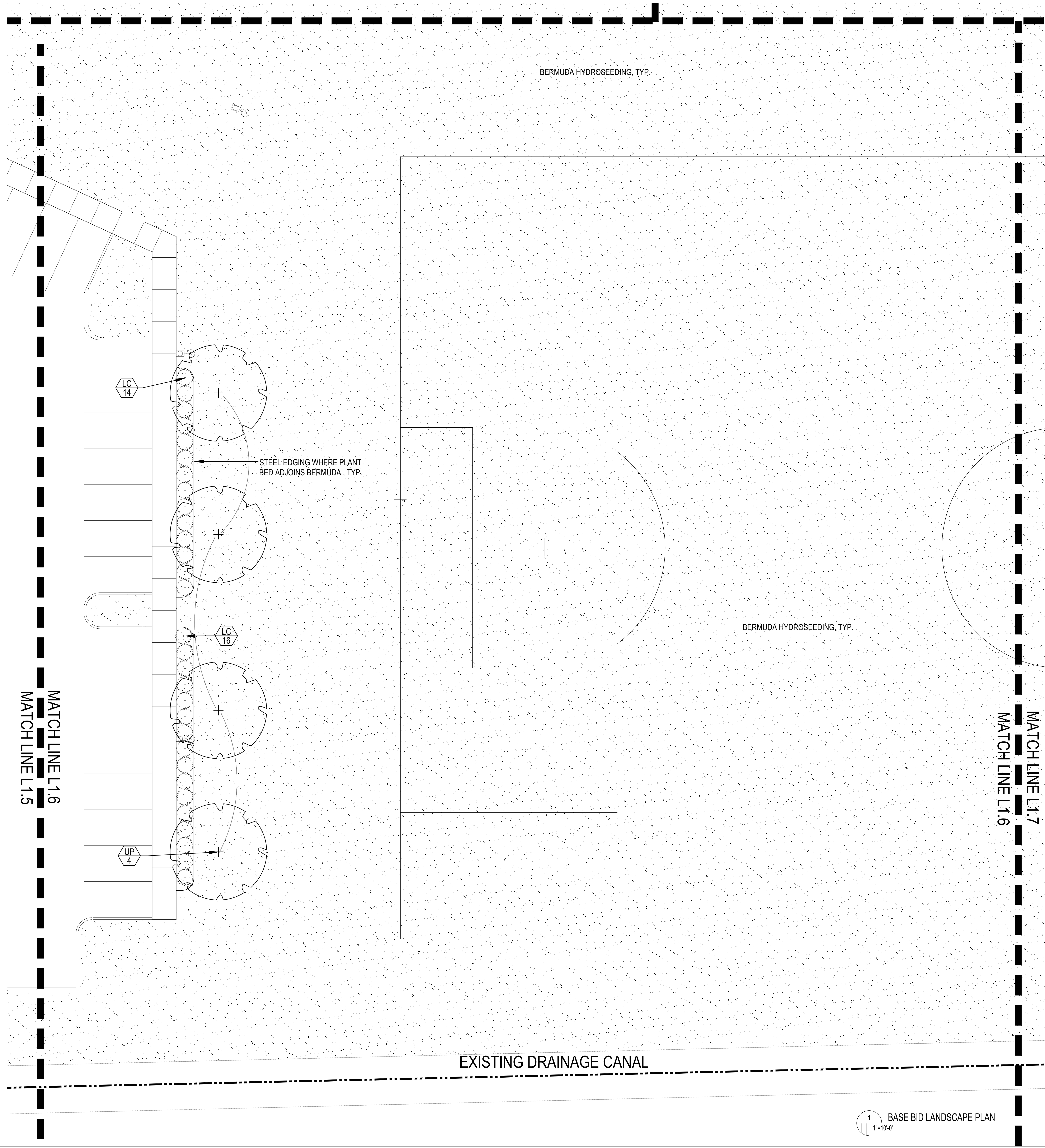
BASE BID
LANDSCAPE PLAN

SHEET NO

L1.5

1 BASE BID LANDSCAPE PLAN
1"=10'-0"





- LEGEND**
- 2"-4" MAXIMUM SIZE RIVER ROCK (GRAY, SEE NOTE #15 ON SHEET L2.0)
 - BAMBOO PALM (CM)
 - SABAL PALM (SP)
 - ILEX NELLIE R. STEVENS (IN)
 - AMERICAN HORNBEAM (CC)
 - BALD CYPRESS (TD)
 - RIVER BIRCH (BN)
 - ALLEE LACEBARK ELM (UP)
 - RED MAPLE (AR)

- FATSIA (FJ)
- SWEET VIBURNUM (VO)
- COMPACT INKBERRY (IG)
- INDIAN HAWTHORN (RI)
- CAST IRON PLANT (AE)
- RUBY LOROPETALUM (LC)
- CHINESE MAHONIA (MF)
- FLORIDA ANISE (IF)
- SUNNY KNOCKOUT ROSE (RR)
- LITTLE HENRY SWEETSPIRE (IV)
- BLUE PACIFIC JUNIPER (JH)

- MUHLY GRASS (MC)
- WEEPING SEDGE (CP)
- SOFT RUSH (JE)
- SPARTINA (SB)
- YELLOW FLAG IRIS (IP)
- LOUISIANA IRIS (LI)
- FIREPOWER NANDINA (ND)
- RUBY STELLA DAYLILY (HR)

FOR COMPLETE PLANT LIST AND NOTES SEE SHEET L 2.0 PLANT SCHEDULE.

FOR LANDSCAPE DETAILS SEE SHEET L 2.1 LANDSCAPE DETAILS.

Perez.

ARCHITECTURE
ENGINEERING
PLANNING
INTERIORS
LANDSCAPE
GRAPHICS

PEREZ
A PROFESSIONAL CORPORATION
217 BURGUNDY STREET, SUITE 11
NEW ORLEANS, LA 70112
WWW.PEREZ.COM

VergesRome
Architects

VERGESROME ARCHITECTS
A PROFESSIONAL ARCHITECTURAL CORPORATION
300 N. CARROLLTON AVE., SUITE 100
NEW ORLEANS, LA 70119
WWW.VERGESROME.COM

PATRICK F. TAYLOR
SCIENCE & TECHNOLOGY REGIONAL ACADEMY

701 CHURCHILL PARKWAY
AVONDALE, LA 70004

100% CONSTRUCTION DOCUMENTS

CLIENT PROJECT NO. 2008-27A

DATE: 06.30.10
PROJECT NO: 4479.000

REVISIONS:

NO	DATE	DESCRIPTION
1	03.25.11	PERMIT

DRAWN BY: CJC
CHECKED BY: GBA

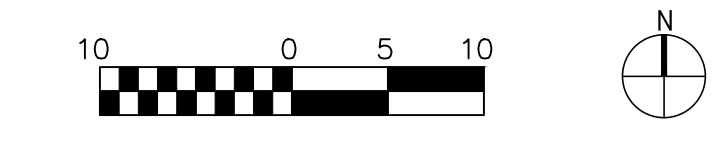
SHEET TITLE

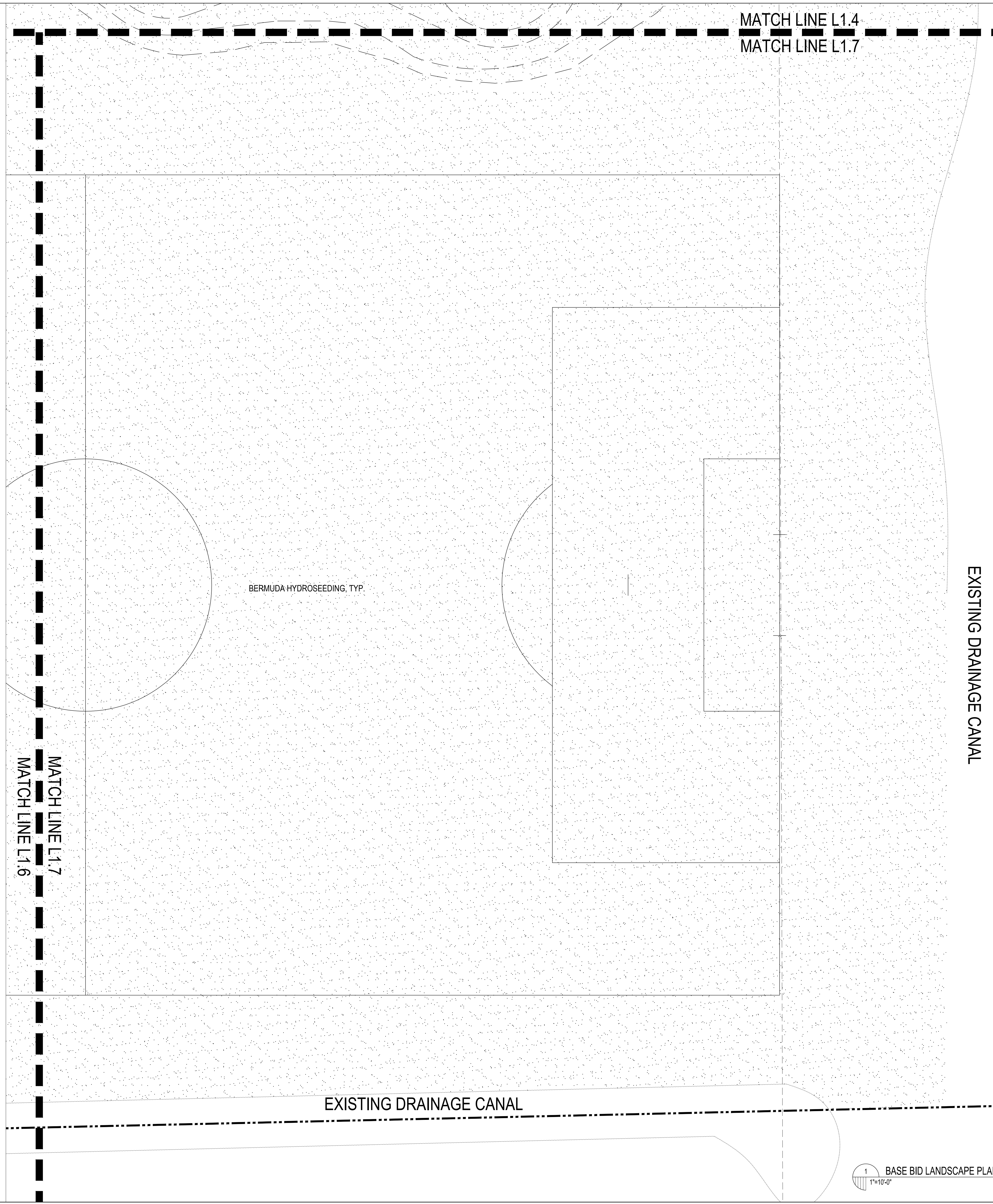
BASE BID
LANDSCAPE PLAN

SHEET NO

L1.6

1 BASE BID LANDSCAPE PLAN
1"=10'-0"





- LEGEND**
- 2"-4" MAXIMUM SIZE RIVER ROCK (GRAY), SEE NOTE #15 ON SHEET L2.0
 - BAMBOO PALM (CM)
 - SABAL PALM (SP)
 - ILEX NELLIE R. STEVENS (IN)
 - AMERICAN HORNBEAM (CC)
 - BALD CYPRESS (TD)
 - RIVER BIRCH (BN)
 - ALLEE LACEBARK ELM (UP)
 - RED MAPLE (AR)

- FATSIA (FJ)
- SWEET VIBURNUM (VO)
- COMPACT INKBERRY (IG)
- INDIAN HAWTHORN (RI)
- CAST IRON PLANT (AE)
- RUBY LOROPETALUM (LC)
- CHINESE MAHONIA (MF)
- FLORIDA ANISE (IF)
- SUNNY KNOCKOUT ROSE (RR)
- LITTLE HENRY SWEETSPIRE (IV)
- BLUE PACIFIC JUNIPER (JH)
- MUHLY GRASS (MC)
- WEEPING SEDGE (CP)
- SOFT RUSH (JE)
- SPARTINA (SB)
- YELLOW FLAG IRIS (IP)
- LOUISIANA IRIS (LI)
- FIREPOWER NANDINA (ND)
- RUBY STELLA DAYLILY (HR)

FOR COMPLETE PLANT LIST AND NOTES SEE SHEET L 2.0 **PLANT SCHEDULE**.

FOR LANDSCAPE DETAILS SEE SHEET L 2.1 **LANDSCAPE DETAILS**.

Perez.
ARCHITECTURE
ENGINEERING
PLANNING
INTERIORS
LANDSCAPE
GRAPHICS

PEREZ
A PROFESSIONAL CORPORATION
217 BURGUNDY STREET, SUITE 11
NEW ORLEANS, LA 70112
WWW.PEREZ.COM

VergesRome
Architects

VERGESROME ARCHITECTS
A PROFESSIONAL ARCHITECTURAL CORPORATION
300 N. CARROLLTON AVE., SUITE 100
NEW ORLEANS, LA 70119
WWW.VERGESROME.COM

CLIENT PROJECT NO. 2008-27A

PATRICK F. TAYLOR
SCIENCE & TECHNOLOGY REGIONAL ACADEMY

701 CHURCHILL PARKWAY
AVONDALE, LA 70094
100% CONSTRUCTION DOCUMENTS

DATE: 06.30.10
PROJECT NO: 4479.000

REVISIONS:

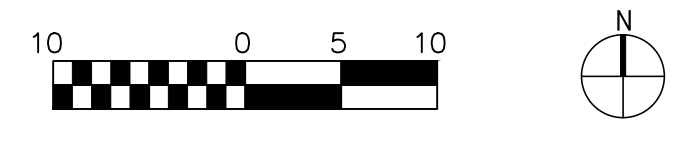
NO	DATE	DESCRIPTION
1	03.25.11	PERMIT

DRAWN BY: CJC
CHECKED BY: GBA
SHEET TITLE:

BASE BID
LANDSCAPE PLAN
SHEET NO

L1.7

1 BASE BID LANDSCAPE PLAN
1"=10'-0"



GENERAL PLANTING NOTES:

1. THE CONTRACTOR SHALL BE RESPONSIBLE FOR LOCATING ALL UNDERGROUND UTILITIES AND SHALL AVOID ANY DAMAGE TO UTILITIES DURING THE COURSE OF WORK. CONTRACTOR IS RESPONSIBLE FOR REPAIRING ANY DAMAGE TO UTILITIES, SITE STRUCTURES, ETC. RESULTING FROM LANDSCAPE CONSTRUCTION.
2. ALL PLANT MATERIAL SHALL CONFORM TO THE REQUIREMENTS AS ESTABLISHED BY THE AMERICAN ASSOCIATION OF NURSERYMAN, LATEST EDITION.
3. ALL PLANT MATERIAL SHALL BE VIGOROUS AND FREE OF INJURY, INSECTS OR DEFECTS. PLANT MATERIAL SHALL BE STOCK FROM A RECOGNIZED NURSERY WITHIN THE SOUTH REGION.
4. WARRANT PLANT MATERIAL TO REMAIN ALIVE AND BE IN HEALTHY, VIGOROUS CONDITION FOR A PERIOD OF 1 YEAR OR FOR NOT LESS THAN TWO FULL PLANTING SEASONS, WHICHEVER PERIOD IS GREATER, AFTER COMPLETION AND ACCEPTANCE OF PLANTINGS.
5. THE MASSING OF PLANT MATERIALS ON THE PLANS ILLUSTRATES THE DESIGN INTENT; HOWEVER, THE ACTUAL INSTALLATION MAY VARY DUE TO EXISTING FIELD CONDITIONS AND OR SPACING/LAYOUT CHANGES MADE BY THE LANDSCAPE ARCHITECT. THE CONTRACTOR IS TO REVIEW ALL LAYOUTS WITH THE LANDSCAPE ARCHITECT PRIOR TO INSTALLATION, AND IS TO PROVIDE ADVANCE NOTIFICATION TO THE LANDSCAPE ARCHITECT WHEN PLANTING IS TO BEGIN. ALL CHANGES TO THE PROPOSED PLANTING LAYOUT REQUIRE APPROVAL BY THE LANDSCAPE ARCHITECT. ALL APPROVALS SHALL BE IN WRITING.
6. TOPSOIL FOR PLANTING PITS AND BEDS SHALL BE FERTILE, FRIABLE, NATURAL TOPSOIL OF LOAMY CHARACTER, WITHOUT ADMIXTURE OF SUBSOIL MATERIAL, OBTAINED FROM A WELL-DRAINED ARABLE SITE, REASONABLY FREE FROM CLAY, LUMPS, COARSE SANDS, STONES, PLANTS, ROOTS, STICKS, AND OTHER FOREIGN MATERIALS. THE ACIDITY RANGE SHALL BE BETWEEN PH 6.0 AND 6.8.
7. PROVIDE PRE-MIXED PLANTING MIXTURE FOR USE AROUND THE BALLS AND ROOTS OF THE PLANTS CONSISTING OF 5 PARTS PLANTING TOPSOIL TO 1 PART PEAT MOSS AND 1/2 LB. OF APPROVED PLANT FERTILIZER FOR EACH CU.YD. OF MIXTURE. PROVIDE PRE-MIXED GROUND COVER BED PLANTING MIXTURE CONSISTING OF 3 PARTS PLANTING TOPSOIL TO 1 PART PEAT MOSS AND 1/2 LB. OF APPROVED PLANT FERTILIZER PER CU. YD. PLANTING MIXTURE REQUIREMENTS:
 GROUND COVER 12" DEEP
 SHRUB BED 18" DEEP
 MAJOR & MINOR TREES - 12" MINIMUM AROUND SIDES (NOT BOTTOM)
8. ALL DISTURBED AREAS SHALL BE SODDED TO MATCH EXISTING.
9. ALL MAJOR AND MINOR TREES TO BE MATCHED SPECIMENS.
10. THE CONTRACTOR SHALL UTILIZE THE SERVICES OF AN EXPERIENCED AND QUALIFIED LANDSCAPE CONTRACTOR LICENSED IN THE STATE OF LOUISIANA TO INSTALL AND MAINTAIN ALL PLANTINGS. SPECIAL CARE, SKILL AND EQUIPMENT IS REQUIRED FOR LIFTING LARGE TREES FROM THE TRUCK TO THE PLANTING HOLES.
11. THE CONTRACTOR SHALL INFORM THE LANDSCAPE ARCHITECT OF ANY CONDITIONS THAT MAY INHIBIT THE HEALTHY GROWTH OF THE PLANT SPECIES CALLED FOR ON THE PLANS. THIS NOTIFICATION MUST OCCUR PRIOR TO THE PLANTING WORK.
12. ALL PLANT BEDS THAT ADJOIN TURF AREAS SHALL BE CONTAINED WITH STEEL EDGING, UNLESS NOTED OTHERWISE ON THE PLANS. WHERE BEDS ARE BORDERED BY SIDEWALKS, DRIVES OR ANY OTHER HARD SURFACE, EITHER PARTIALLY OR WHOLLY, EDGING IS NOT NECESSARY AT THAT INTERSECTION, ONLY WHERE BORDERED BY SOD OR HYDROSEEDING. SEE SPECIFICATIONS FOR DETAILS ON STEEL EDGING.
13. ALL NEWLY INSTALLED TREES SHALL BE EQUIPPED WITH SLOW RELEASE WATERING BAGS, SEE SPECIFICATIONS.
14. SEE **LANDSCAPING SECTION IN THE SPECIFICATIONS** FOR MORE DETAILS ON LANDSCAPE AND PLANTING REQUIREMENTS.
15. RIVER ROCK SHOWN ON THE LANDSCAPE PLANS SHALL BE GRAY IN COLOR AND A MIX OF SIZES BETWEEN 2" MINIMUM AND 4" MAXIMUM. SAMPLES SHALL BE PROVIDED TO THE LANDSCAPE ARCHITECT FOR APPROVAL PRIOR TO PURCHASE AND INSTALLATION.

Per ADD No. 5 Q95 Remove Specialty Plants-Sensory Garden.

PATRICK F. TAYLOR PLANTING SCHEDULE

SYM.	BOTANICAL NAME	COMMON NAME	SIZE	REMARKS	BASE BID QUANTITY	ALT. #1 QUANTITY
TREES						
AR	ACER RUBRUM 'FLAME'	FLAME RED MAPLE	45 GAL., 3.25"-3.5" CAL., 15'-16' H X 4'-5" SPR.	NO. 1 GRADE	4	
BN	BETULA NIGRA	RIVER BIRCH	B&B, MIN. 6" CALIPER COMBINED STEMS, MIN. 3 LEADERS, 12'-14' HEIGHT	NO. 1 GRADE	6	3
CC	CARPINUS CAROLINIANA	AMERICAN HORNBEAM	65 GAL.	NO. 1 GRADE	3	
CM	CHAMAEDOREA MICROSPADIX	HEARTY BAMBOO PALM	4' MIN. HT, MULTI-TRUNK	NO. 1 GRADE	5	
IN	ILEX NELLIE R. STEVENS	NELLIE STEVENS HOLLY	30 GAL., MULTI-TRUNK, TREE FORM	NO. 1 GRADE	14	
SP	SABAL PALMETTO	SABAL PALM	B&B, 20' CT, BOOTED	NO. 1 GRADE	19	
TD	TAXODIUM DISTICHUM 'AUTUMN GOLD'	AUTUMN GOLD BALD CYPRESS	65 GAL., 3.25"-3.50" CAL., 11'-13' H X 5'-7" SPR.	NO. 1 GRADE	15	
UP	ULMUS PARVIFOLIA 'ALLEE'	ALLEE LACEBARK ELM	65 GAL., 2.50"-2.75" CAL., 14'-15' H X 7'-8" SPR.	NO. 1 GRADE	8	
SHRUBS						
AE	ASPIDISTRA ELATIOR	CAST IRON PLANT	3 GAL.	SPACED 18" O.C.	91	
FJ	FATSIA JAPONICA	FATSIA	7 GAL.	SPACED 36" O.C.	76	
IF	ILICIMUM FLORIDANUM PEBBLEBROOK	PEBBLEBROOK FLORIDA ANISE	7 GAL.	SPACED 48" O.C.	21	
IG	ILEX GLABRA COMPACTA	COMPACT INKBERRY HOLLY	3 GAL.	SPACED 36" O.C.	55	35
IV	ITEA VIRGINICA 'LITTLE HENRY'	LITTLE HENRY SWEETSPIRE	3 GAL.	SPACED 40" O.C.	26	
LC	LOROPETALUM CHINENSIS X 'RUBY'	RUBY LOROPETALUM	3 GAL., 24" H X 18" SPR.	THIS IS A DWARF FORM (4-5') SPACED 48" O.C.	194	20
MF	MAHONIA FORTUNEI	CHINESE MAHONIA	3 GAL.	SPACED 36" O.C.	104	
ND	NANDINA DOMESTICA 'FIREPOWER'	FIREPOWER NANDINA	1 GAL., FULL	SPACED 18" O.C.	599	
RI	RHAPHIOLEPIS INDICA SNOW WHITE	SNOW WHITE INDIAN HAWTHORN	3 GAL.	SPACED 48" O.C.	60	
RR	ROSA 'RADSYUNNY'	SUNNY KNOCKOUT ROSE	3 GAL., 14" H X 16" SPR.	SPACED 36" O.C.	174	
VO	VIBURNUM ODORATISSIMUM	SWEET VIBURNUM	3 GAL., 24" H X 18" SPR.	SPACED 60" O.C.	63	
GRASS/GROUNDCOVERS						
JH	JUNIPERUS CONFERTA 'BLUE PACIFIC'	BLUE PACIFIC JUNIPER	1 GAL.	SPACED 48" O.C.	39	
CP	CAREX 'BEATLEMANIA'	BEATLES SPRING SEDGE	1 GAL.	SPACED 12" O.C.	3098	
JE	JUNCUS EFFUSUS	SOFT RUSH	1 GAL.	SPACED 12" O.C.	140	90
HR	HEMEROCALLIS 'RUBY STELLA'	RUBY STELLA DAYLILY	1 GAL.	SPACED 18" O.C.		
LI	IRIS LOUISIANA HYBRIDS	LOUISIANA IRIS	3 GAL.	SPACED 18" O.C., COLOR TBD BY LANDSCAPE ARCHITECT	265	60
IP	IRIS PSEUDACORUS	YELLOW FLAG IRIS	1 GAL.	SPACED 18" O.C.	220	
MC	MUHLENBERGIA CAPILLARIS	GULF MUHLYGRASS	1 GAL., 12" H, FULL	SPACED 24" O.C.	762	73
SB	SPARTINA BAKERI	SPARTINA/SAND CORDGRASS	3 GAL., 30" H, FULL	SPACED 36" O.C.	560	24
SOD						
	COMMON BERMUDA HYDROSEEDING	CYNODON DACTYLON				
	COMMON BERMUDA SOD	CYNODON DACTYLON				

SPECIALTY PLANTS- SENSORY GARDEN

AG	ABELIA GRANDIFLORA 'PANACHE'	GLOSSY ABELIA	3 GAL.	SPACED 36" O.C.		
CL	CHASMANTHIUM LATIFOLIUM	INDIAN WOOD OATS	1 GAL.	SPACED 18" O.C.		
JU	JUNCUS EFFUSUS SPIRALIS	CORKSCREW RUSH	1 GAL.	SPACED 12" O.C.		
GS	GOSSYPIUM SPP.	COTTON	3 GAL.	SPACED 24" O.C.		
IR	IRIS GERMANICA 'HARVEST OF MEMORIES'	GERMAN BEARDED IRIS	5.5" POT	SPACED 18" O.C.		
HG	HIBISCUS GRANDIFLORUS	SWAMP HIBISCUS	3 GAL.	SPACED 30" O.C.		
MO	MELISSA OFFICINALIS	LEMON BALM	4 INCH POTS	SPACED 12" O.C.		
LS	LYCORIS SQUAMIGERA	SURPRISE LILY	BULBS	TO BE INTERSPERSED WITH OTHER PLANTS, SEE PLAN FOR LOCATION AND QTY.		
MR	MITCHELLA REPENS	TWINBERRY	4 INCH POTS	SPACED 12" O.C.		
MP	MONARDA PUCNTATA	SPOTTED HORSEMINT	1 GAL.	SPACED 30" O.C.		
LA	LUNARIA ANNUA	MONEY PLANT	5.5" POT	SPACED 18" O.C.		
SO	SALVIA OFFICINALIS	PUPURASCENS PURPLE SAGE	4 INCH POTS	SPACED 12" O.C.		
SA	SALVIA OFFICINALIS 'BERGGARTEN'	BERGGARTEN SAGE	4 INCH POTS	SPACED 12" O.C.		
VE	VACCINIUM ELLIOTI	HIGH BUSH BLUEBERRY	3 GAL.	SPACED 48" O.C.		

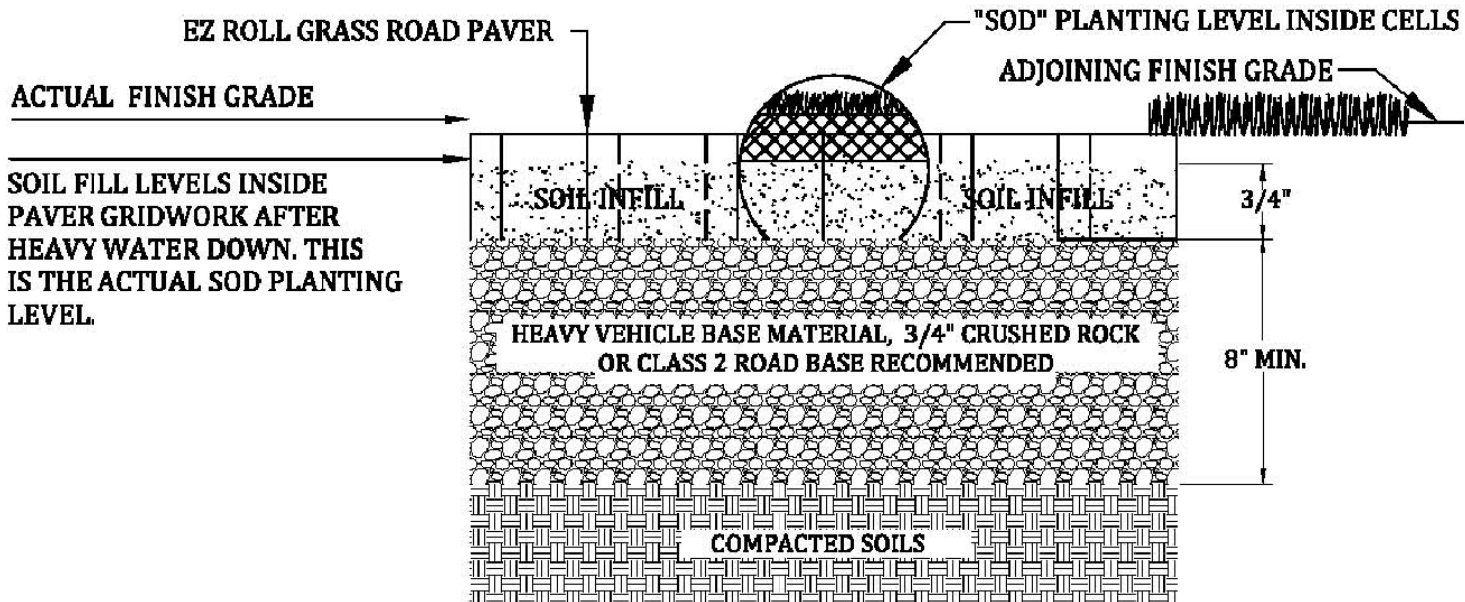
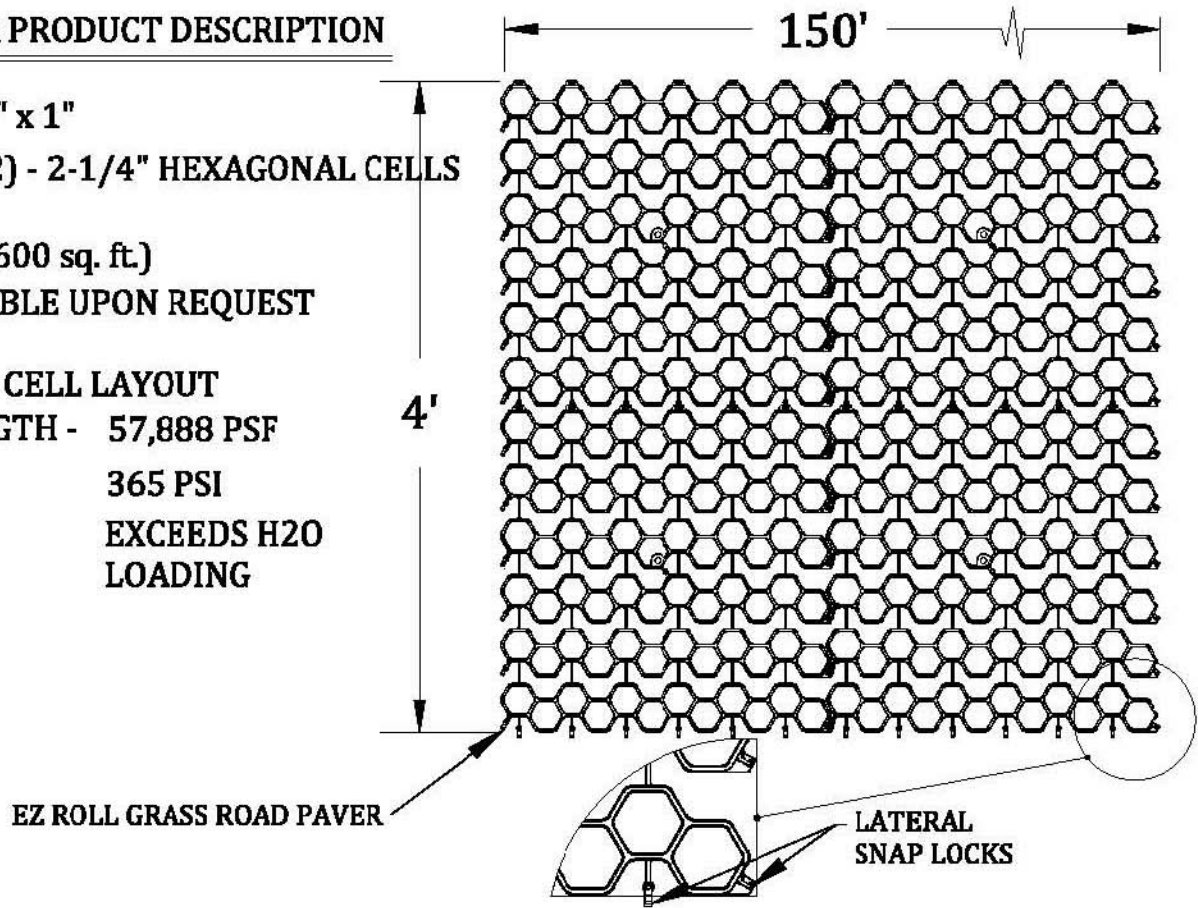
NOTE: SEE **SHEETS L-1.0 THROUGH L-1.9** FOR LANDSCAPE PLANS.

REVISIONS:		
NO	DATE	DESCRIPTION
1	03.25.11	PERMIT

EZ ROLL GRASS PAVER PRODUCT DESCRIPTION

PANEL SIZE - 24" x 24" x 1"
 CELLS PER PANEL - (72) - 2-1/4" HEXAGONAL CELLS
 ROLL SIZE - 4' x 150' (600 sq. ft.)
 CUSTOM SIZES AVAILABLE UPON REQUEST

NESTED HONEYCOMB CELL LAYOUT
 COMPRESSIVE STRENGTH - 57,888 PSF
 365 PSI
 EXCEEDS H2O
 LOADING



SOIL INFILL THE COMPOSITION OF THE MATERIAL WILL BE BASED ON LOCAL CONDITIONS AND DETERMINED BY THE LANDSCAPE ARCHITECT OR AS SPECIFIED IN THE CONTRACT DOCUMENTS

GRASS SEED OR SOD TYPE TO BE AS SPECIFIED IN THE CONTRACT DOCUMENTS OR BY DESIGN LANDSCAPE ARCHITECT.

GRASS PAVER FIRELANE DETAIL

HEAVY VEHICLE OR FIRE ACCESS ROAD
 REFER TO SECTION 32 12 43 FOR SPECIFICATIONS

SCALE: N.T.S.

