

PAVILION AT ESPLANADE

1000 WEST ESPLANADE BLVD, KENNER, LOUISIANA 70065



- **SIZE** 1,360 - 89,899 SQUARE FEET
100,946 CONTIGUOUS SQUARE FEET
- **PRICE** SEE AGENT
- **AVAILABLE** IMMEDIATELY
- **TRAFFIC** 26,800 VPD (W ESPLANADE)
22,850 VPD (WILLIAMS BLVD)

○ **2010 CENSUS DEMOGRAPHICS**

<i>Distance</i>	<i>Population</i>	<i>Average HH Income</i>
1 MILE	17,630	\$68,417
3 MILES	87,736	\$70,188
5 MILES	152,937	\$69,097

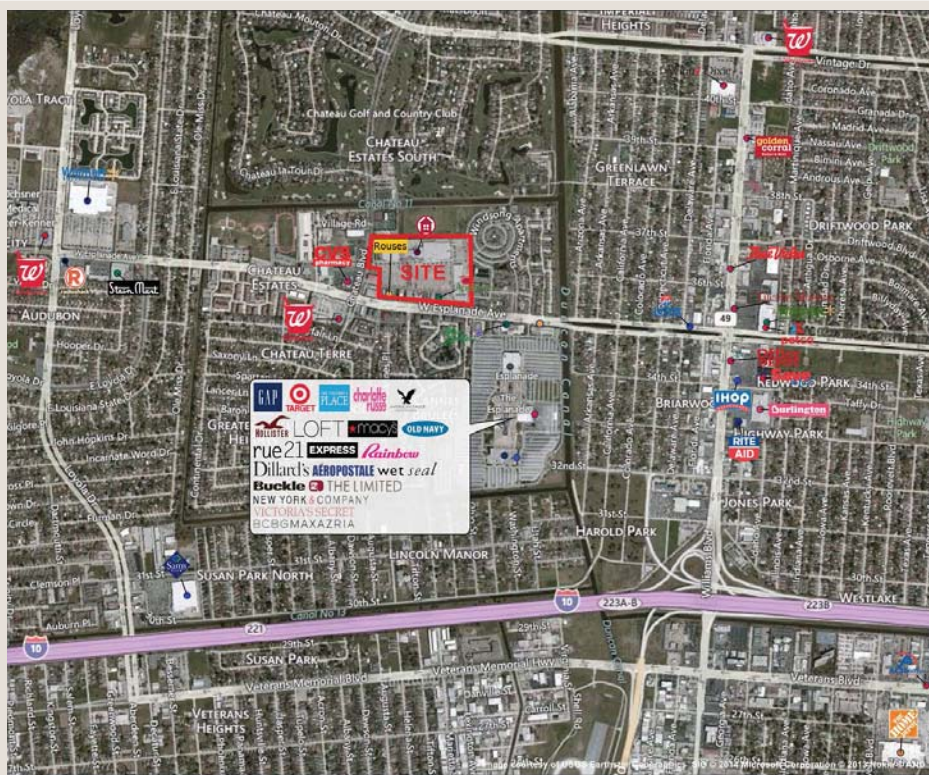
BEAU BARKERDING
JOHN MOSS

P. 504.527.0882
F. 504.527.5119

BEAU@RETAILSPECIALISTS.COM
JOHN@RETAILSPECIALISTS.COM



PAVILION AT ESPLANADE



- Prime retail opportunity on West Esplanade in Kenner.
- Excellent visibility, signage, and parking available.
- Pavilion at Esplanade is across the street from the Esplanade Mall. Anchor tenants at the Esplanade Mall include Target, Macy's, Dillard's, and Best Buy.
- Co-tenants include: Rouses Supermarket, Anna's Linens, McAlister's Deli, and Mattress Firm.



retail
SPECIALISTS

334 CARONDELET ST. STE 200
NEW ORLEANS, LA 70130