

Office / Warehouse For Lease

1120 Lafayette St, Gretna, LA 70053



Max J. Derbes, Inc.
REALTORS ■

Listing ID: 29951186
Status: Active
Property Type: Industrial For Lease
(also listed as Retail-Commercial)
Industrial Type: Free-Standing
Contiguous Space: 11,250 SF
Total Available: 11,250 SF
Lease Rate: \$7.44 PSF (Annual)
Base Monthly Rent: \$6,975
Lease Type: NNN



Overview/Comments

Building: A 11,250 (+/-) square foot building.
Office: 3,170 (+/-) square feet of office.
Warehouse: 8,080 (+/-) square feet. 13' - 15'6" eave height and 17' peak height.
Land Area: 18,165 (+/-) square feet
Loading: Four (4) grade level overhead warehouse doors:
North facing: 10'x10, 10'x10, 12'x12'
East facing: 14'x14'
Zoning: C-1, Neighborhood Commercial
Rental Rate: \$6,975 per month, NNN (\$7.44 per square foot).

The interior of this building is impressive! Industrial chic finishes. Very contemporary. A glass company was the prior user and they did an incredible job finishing the space. The lobby features stained and polished concrete floors, a peaked ceiling with exposed duct work and a blown black finish. Beautiful glass walls, glass sliding doors, built in desks cabinets and tables with glass tops. All furniture shown in photos is included. A large corner executive office features a built in glass top conference table surrounded by stylish white leather conference chairs, a sitting area with a matching white leather love seat and club chair, and a large three sided executive desk with built in upper cabinets. The lobby has 6 work stations. There is a corridor with six private offices, two handsome built in drafting tables, and a conference room all separated by glass walls. There are three bathrooms in the building. There is mezzanine storage not included in square foot calculations, and ample parking.

More Information Online

<http://maxderbes.catylist.com/listing/29951186>



QR Code

Scan this image with your mobile device:

General Information

Industrial Type: Free-Standing

Available Space

Suite/Unit Number:	NA	Date Available:	04/01/2016
Space Available:	11,250 SF	Lease Rate:	\$7.44 PSF (Annual)
Minimum Divisible:	11,250 SF	Lease Type:	NNN
Maximum Contiguous:	11,250 SF	Parking Spaces:	0
Space Type:	Relet		

Building Related

Passenger Elevators: 0
Freight Elevators: 0

Location

Address: 1120 Lafayette St, Gretna, LA 70053 MSA: New Orleans-Metairie
County: Jefferson Submarket: Westbank



Property Images



IMG_7482



IMG_7485



IMG_7495



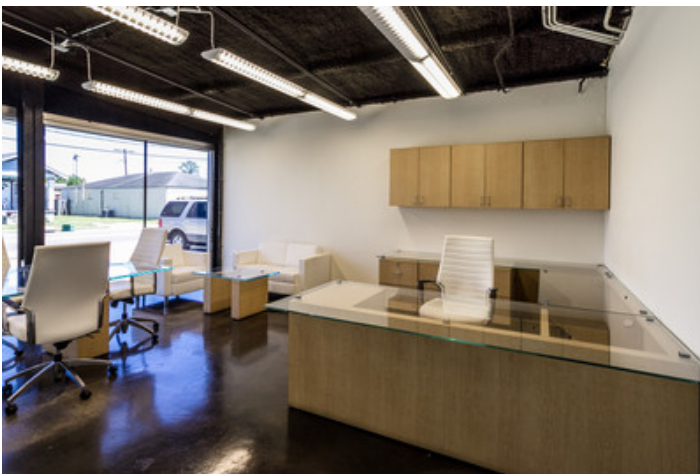
IMG_7486



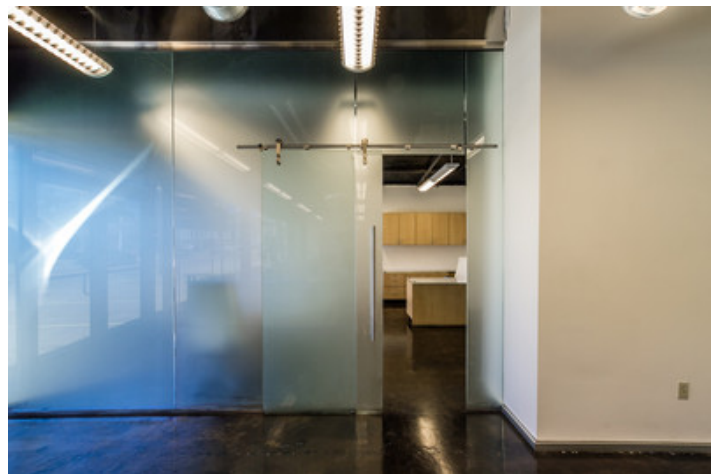
IMG_7500



IMG_7548



IMG_7483



IMG_7490



IMG_7492



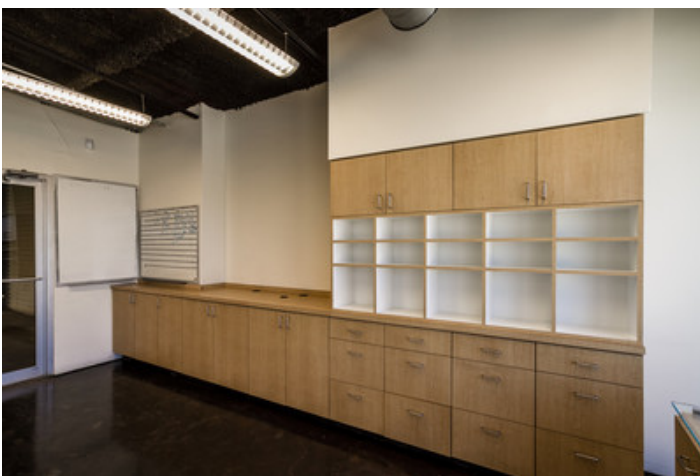
IMG_7503



IMG_7496



IMG_7524



IMG_7501



IMG_7542



IMG_7547



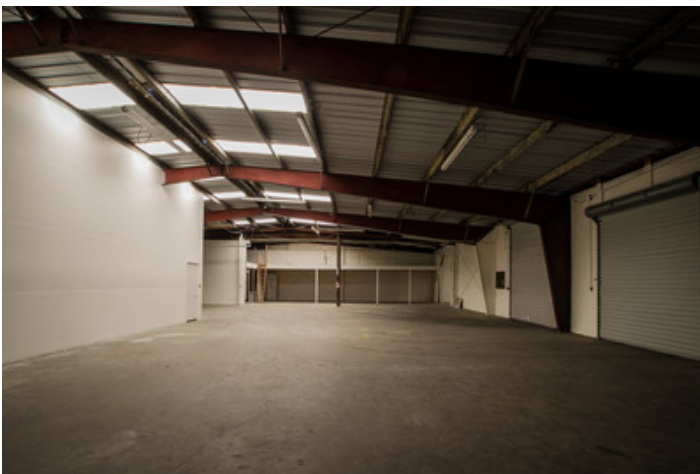
IMG_7520



IMG_7507



IMG_7515



IMG_7509



IMG_1902



IMG_7564



IMG_1898

Property Contacts



Bryce French

Max J Derbes Inc
504-427-2090 [M]
504-733-4555 [O]
bryce@maxderbes.com