

**Property:** 2200 Veterans Blvd  
Kenner, LA 70062

**Total Space Available:** 13,455

**Rental Rate:** \$12.75 - \$16.00

**Min. Divisible:** 1,653 rsf

**Max. Contiguous:** 6,530 rsf

**Property Type:** Office

**Additional Sub-types:** Retail

**Building Size:** 44,875

**Building Class:** B

**Lease Type:** Full Service & NNN

**Date Avail. :** Immediately

**Expense Stop:** \$6.53



### **Property Description:**

Recently renovated, this two story office building includes a lush and well maintained landscaped atrium featuring ponds, water fountains and a tranquil atmosphere. We provide complimentary office space planning using our experienced architects, to help you design a space that is best suited to your needs. The end cap is our retail space with its own entrance and has a three-lane drive up. There is a large lobby area, three executive offices, conference room kitchen, restrooms and vault. The owners are willing to build out and this particular space may be leased with or without drive-up and vault.

### **Location Description:**

The 2200 Veterans Boulevard building is conveniently located near the intersection of Veterans Boulevard and Williams Boulevard in Kenner, Louisiana. This centrally located property is near hotels, restaurants, retail shopping, and the Louis Armstrong International airport.

### **Contact**

**Susan K. Wallace or Donna Gaudet**

1<sup>st</sup> Lake Commercial Properties, Inc.

3925 N. I-10 Service Road Suite 130

Metairie, LA 70002

(504) 455-8644 FAX ( 504) 885-4941





### Space for Lease Information

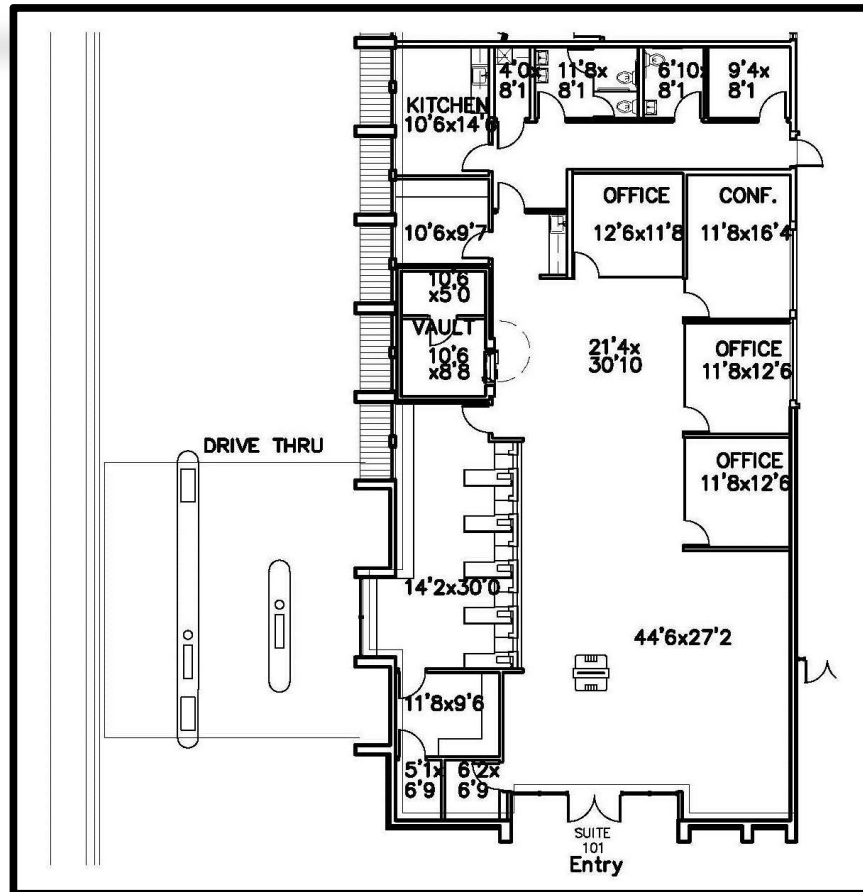
**Address:**

2200 Veterans Blvd.  
Kenner, LA 70062

**Suite:** 101

**RSF:** 3,868

**Comments:** executive finishes, lobby, service counter, private offices, vault, drive through, kitchen, restrooms, storage



### Contact

**Susan K. Wallace or Donna Gaudet**

1<sup>st</sup> Lake Commercial Properties, Inc.

3925 N. I-10 Service Road Suite 130

Metairie, LA 70002

(504) 455-8644 FAX ( 504) 885-4941

Licensed in the State of Louisiana

**Space for Lease Information**

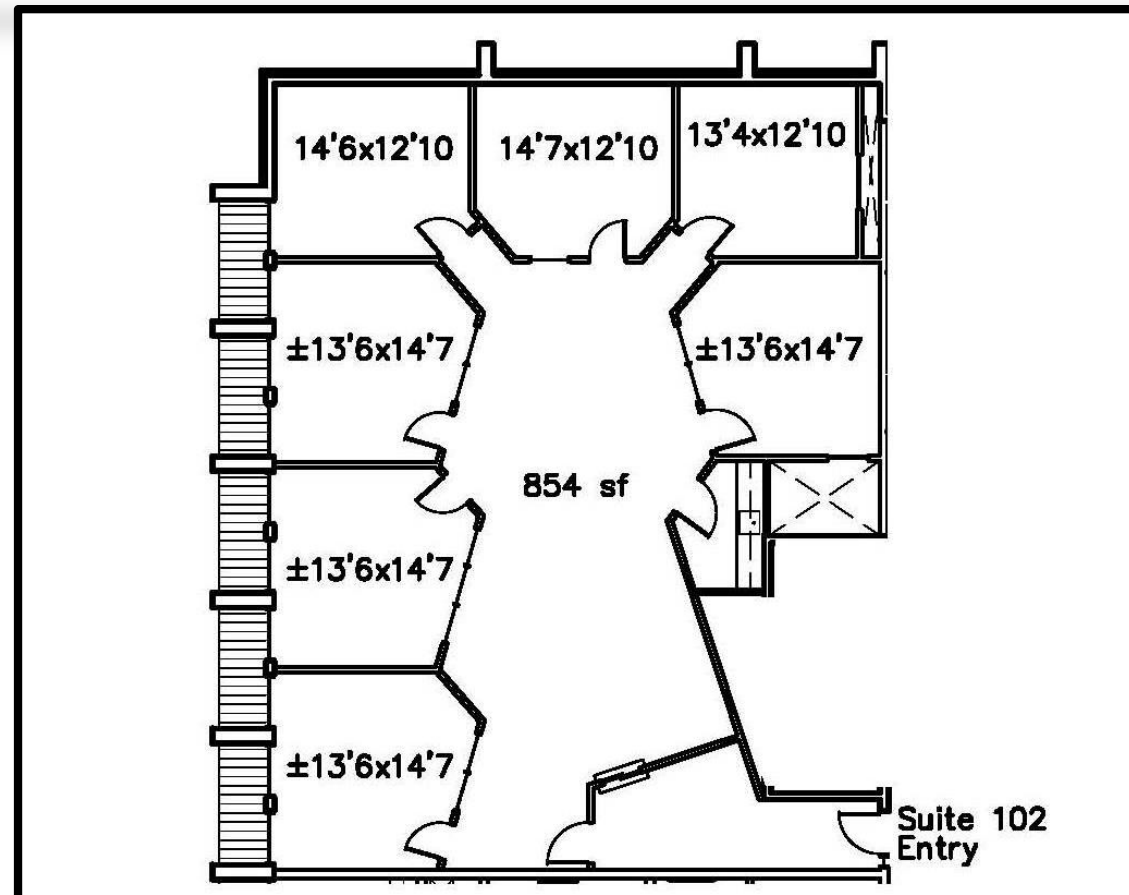
**Address:** 2200 Veterans Blvd. Metairie, LA 70062

**Suite:** 102

**RSF:** 2,662

**Comments:**

Reception with buzzer entry, seven private offices and kitchenette.



**Contact**

**Susan Wallace or Donna Gaudet**

1<sup>st</sup> Lake Commercial Properties, Inc.  
3925 N. I-10 Service Road Suite 130  
Metairie, LA 70002  
(504) 455-8644 FAX ( 504) 885-4941  
Licensed in the State of Louisiana

The foregoing is solely for information purposes and is subject to change without notice. Subject to errors, omissions, changes in terms and conditions prior to lease or withdrawal without notice.

**Space for Lease Information**

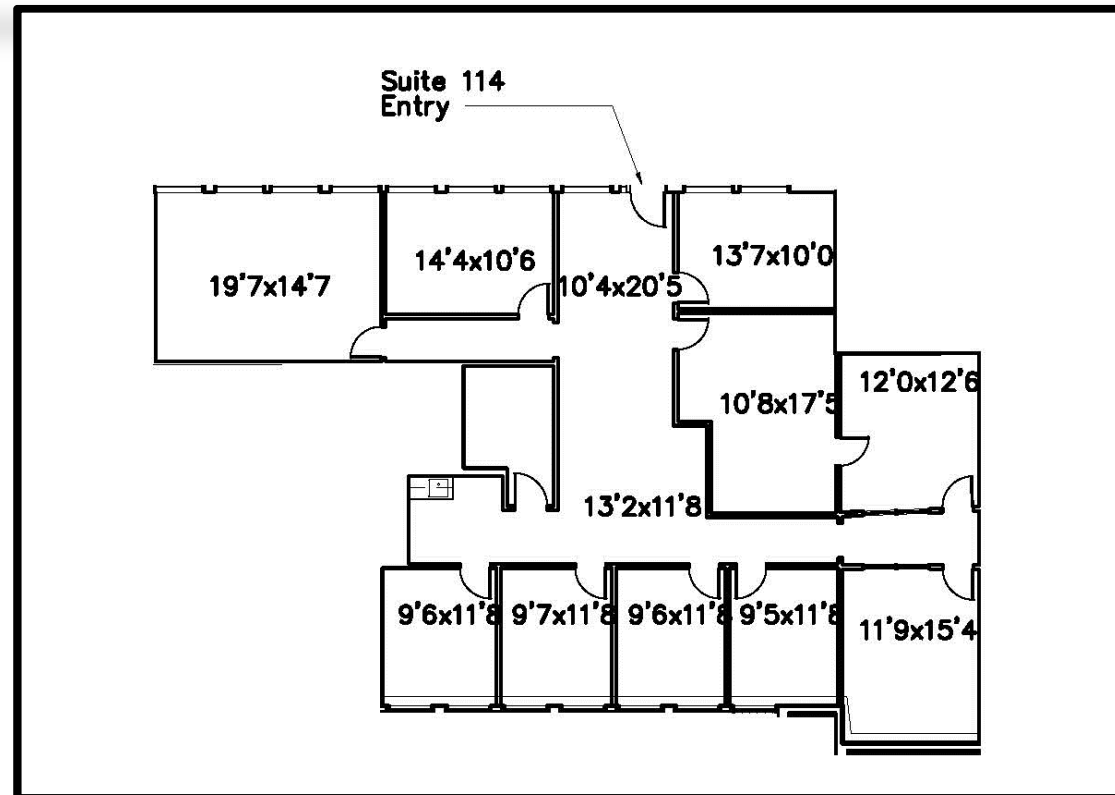
**Address:**

2200 Veterans Blvd.  
Kenner, LA 70062

**Suite:** 114

**RSF:** 2,724

**Comments:** Reception, nine private offices, conference room, kitchenette and storage.



**Contact**

**Susan K. Wallace or Donna Gaudet**

1<sup>st</sup> Lake Commercial Properties, Inc.

3925 N. I-10 Service Road Suite 130

Metairie, LA 70002

(504) 455-8644 FAX ( 504) 885-4941

Licensed in the State of Louisiana

**Space for Lease Information**

**Address:**

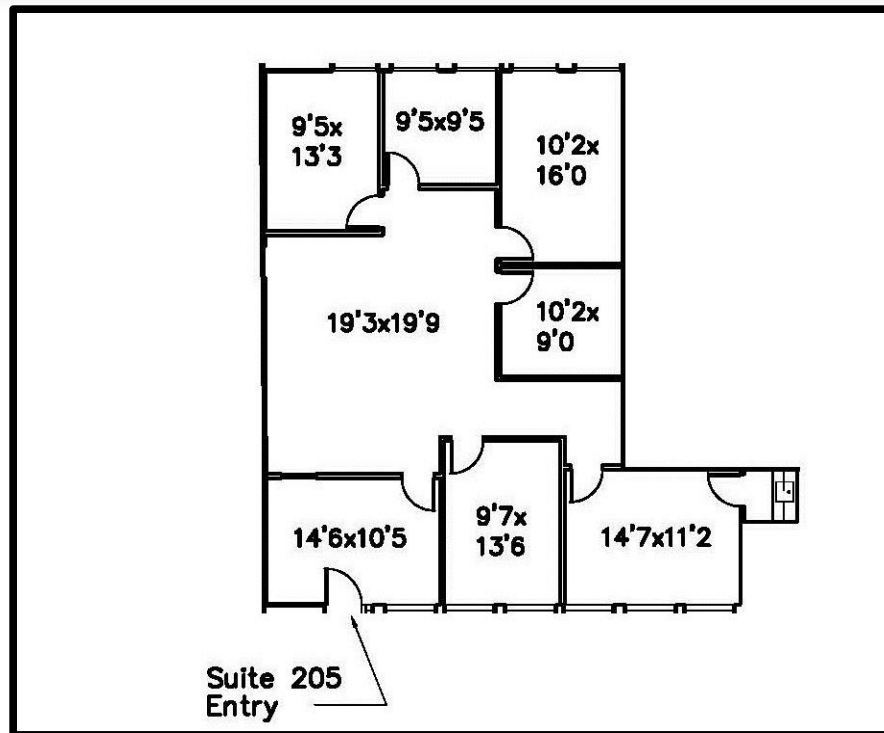
2200 Veterans Blvd.  
Kenner, LA 70062

**Suite:** 205

**RSF:** 1,719

**Comments:**

Reception, waiting room, six  
private offices and  
conference room.



**Contact**

**Susan K. Wallace or Donna Gaudet**

1<sup>st</sup> Lake Commercial Properties, Inc.

3925 N. I-10 Service Road Suite 130

Metairie, LA 70002

(504) 455-8644 FAX ( 504) 885-4941

Licensed in the State of Louisiana

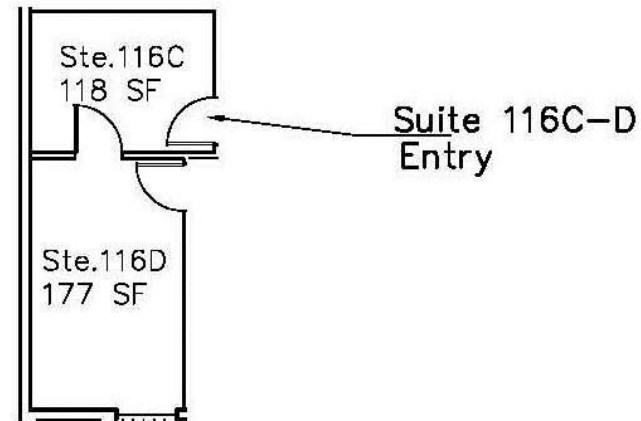
**Space for lease information**

**Property Address:**  
2200 Veterans Blvd.  
Kenner, LA 70062

**Suite:** 116 C/D

**RSF:** 333

**Special Notes:**  
Available April 1, 2015



Suite 116C-D – 333 rsf

**Contact**

**Susan K. Wallace**

1<sup>st</sup> Lake Commercial Properties, Inc.  
3925 N. I-10 Service Road Suite 130  
Metairie, LA 70002  
(504) 455-8644 FAX ( 504) 885-4941  
Licensed in the State of Louisiana