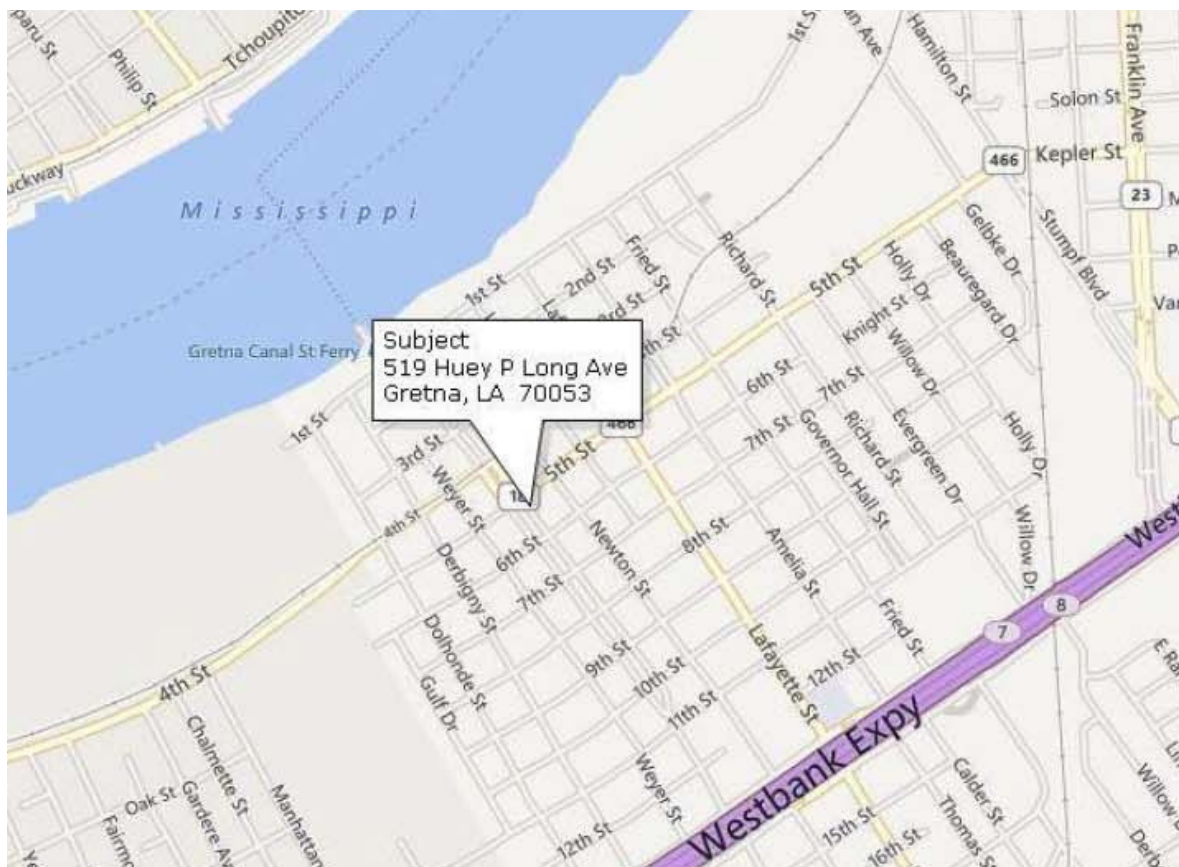




JEDCO

Prepared by the Jefferson Parish Economic Development Commission



Property For Lease

519 Huey P. Long Ave. Gretna, LA

Property Type:	Office Structure
Owner:	Jefferson Parish
Available Space:	14,256
Flood Zone:	X



Property Overview

Jefferson Parish is seeking tenant(s) for 519 Huey P. Long Ave., a former school located in the desirable Gretna Historical District. The property is located in a zone X flood zone and could allow for a wide range of office, service, retail and other commercial uses. The property is located in an Opportunity Zone as well as a historic district, allowing for a variety of development incentives. The formal process of leasing the property will be conducted by Jefferson Parish in coordination with JEDCO and the City of Gretna. The first floor of the property is built out for use as a meeting hall and for use as a historic museum. The museum occupies 2,360 sf and the meeting room occupies 1,344 sf. A prep kitchen on the first floor occupies 720 sf. The second and third floor of the property is completely gutted and includes two restrooms and a hallway. Common areas on each floor includes the elevator, restrooms, and hallways. There is an additional 1,344 sf of stairwells. Each floor totals approximately 7,128 sf. For more information, contact JEDCO at jgalati@jedco.org.

Property Contact: Janet R. Galati, JEDCO Strategic Initiatives Specialist

O: 504.875.3940 or E: jgalati@jedco.org

Photographs of Subject Property For Lease by Jefferson Parish



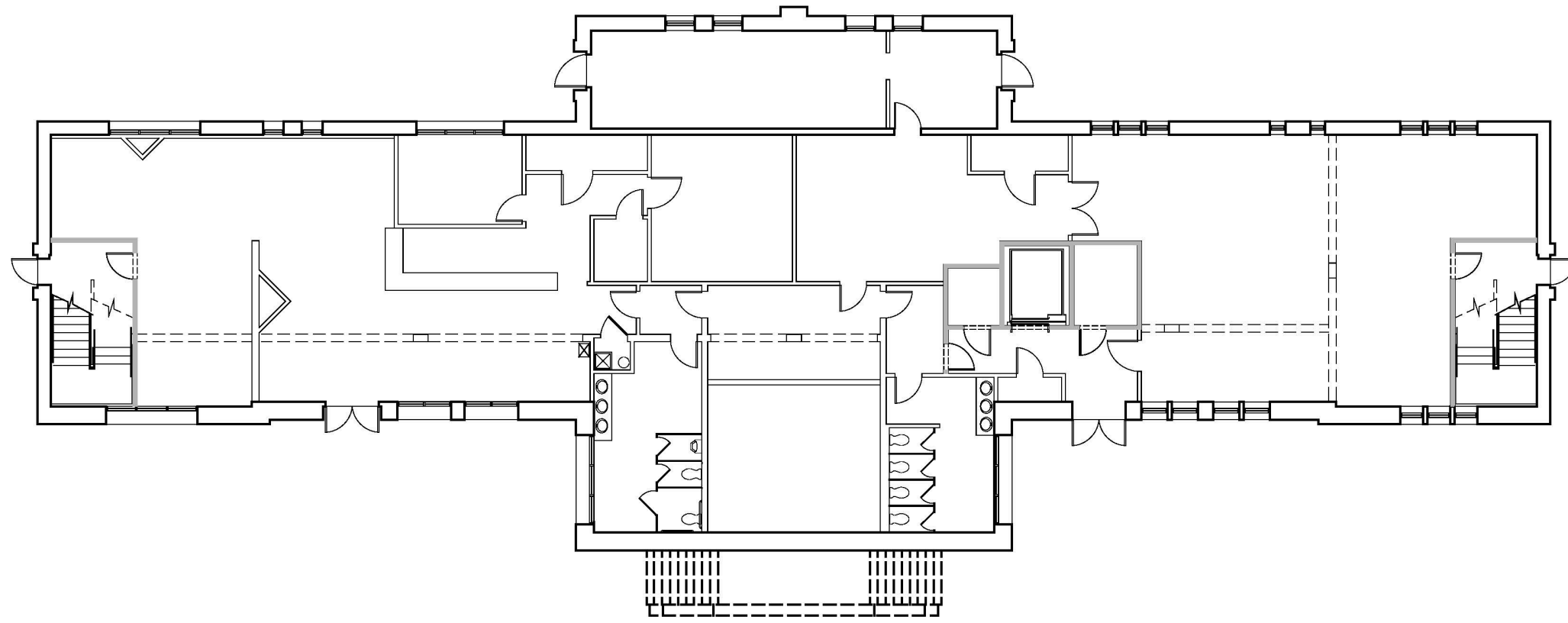
Photographs of Subject Property For Lease by Jefferson Parish



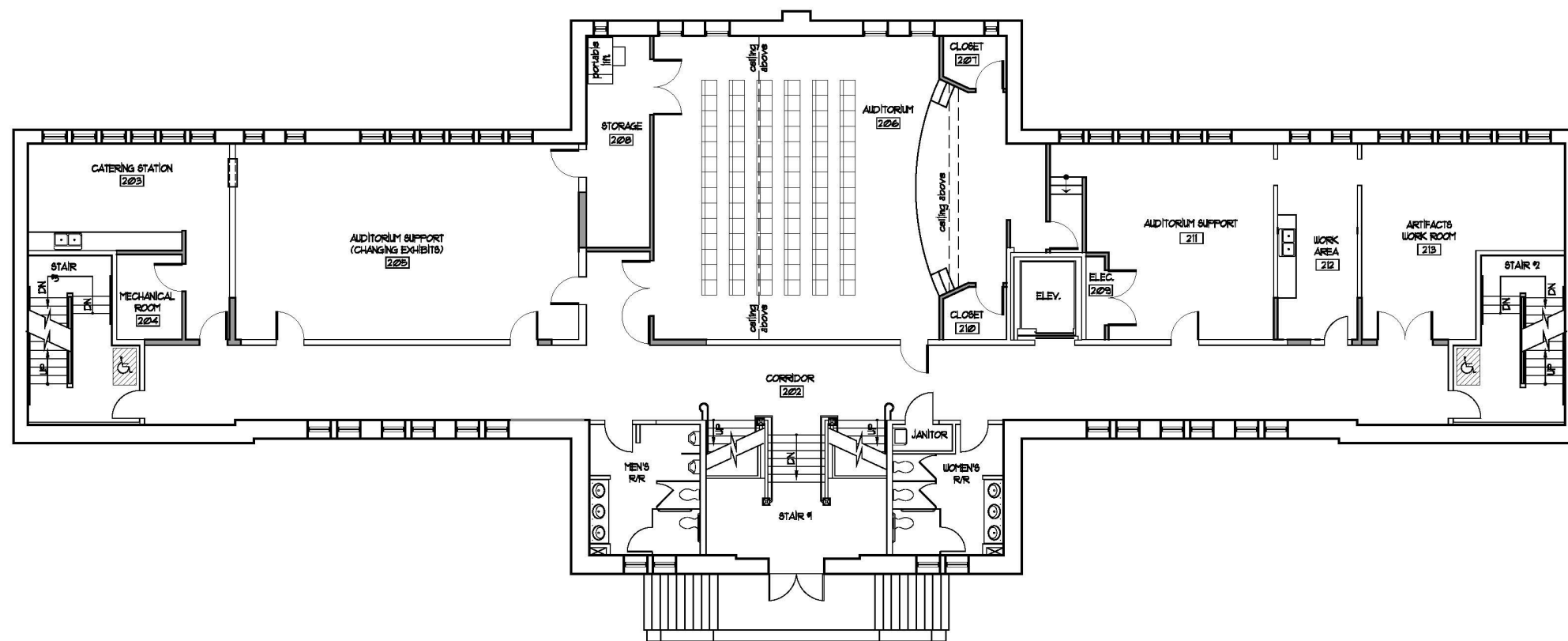
Photographs of Subject Property For Lease by Jefferson Parish



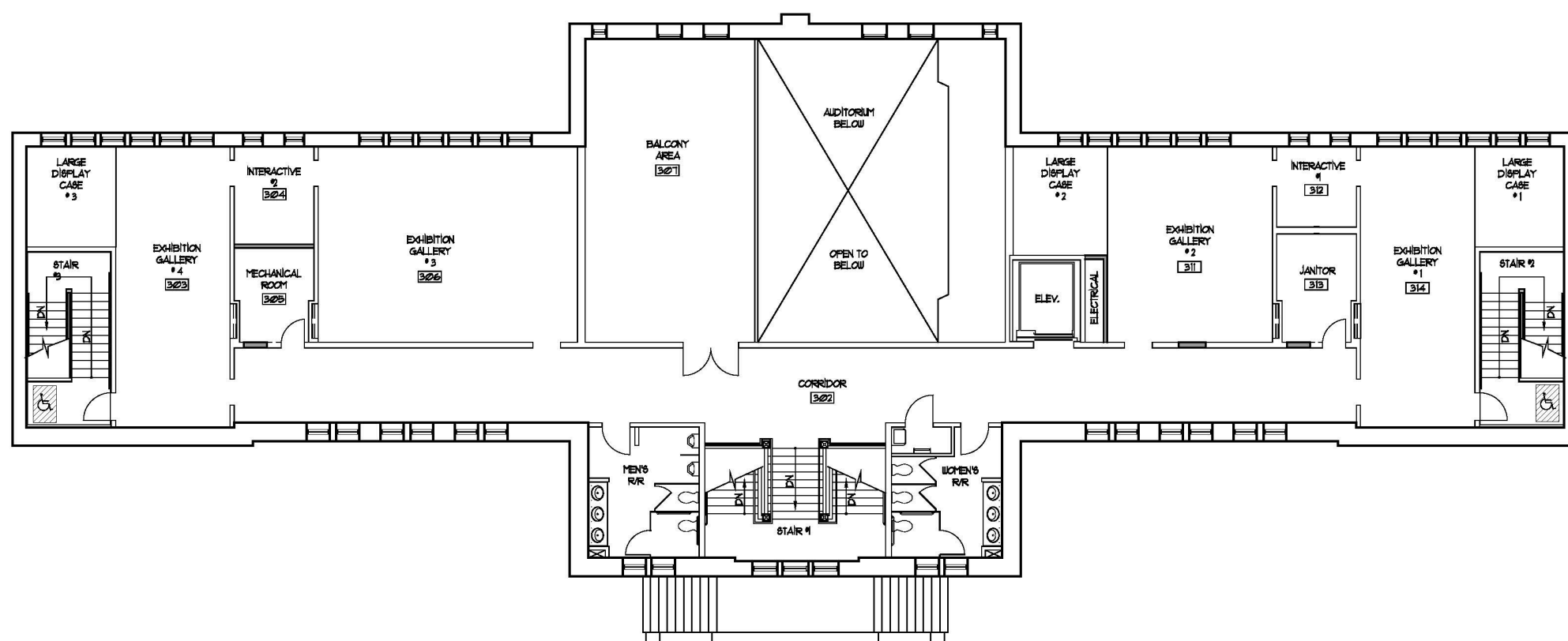
Site Plan of Subject Property For Lease by Jefferson Parish



① FIRST FLOOR PLAN
SCALE: 3/32" = 1'-0"



② SECOND FLOOR PLAN
SCALE: 3/32" = 1'-0"



③ THIRD FLOOR PLAN
SCALE: 3/32" = 1'-0"