

2024 JEDCO ANNUAL REPORT



Dear Partners,

It was an honor to serve as the Chairwoman of the JEDCO Board of Commissioners in 2024. For more than 38 years, JEDCO has been a driving force behind Jefferson Parish’s economic growth—championing business retention, fueling expansion, and attracting new opportunities through award-winning efforts. From quality of life improvements to strategic business initiatives, JEDCO offers a robust toolkit designed to strengthen, elevate, and connect with local enterprises. Last year, we maintained that momentum by continuing to invest in the future of Jefferson Parish and the people who live here.

Ahead of the Jefferson Parish Bicentennial, JEDCO announced a major marketing campaign to attract new business investment, engage with companies seeking to expand or relocate, and foster economic growth in Jefferson Parish. The campaign, titled “MORE HERE,” aims to elevate Jefferson Parish’s unique offerings and community strengths, including a diverse industry base, strategic location, cultural richness, and pro-business government. This campaign reflects Jefferson Parish’s long history as a business destination and thriving residential hub.

JEDCO celebrated a long list of wins in 2024, from promoting the innovative off-bottom oyster farms in Grand Isle to attracting major economic drivers to the area to celebrating numerous retention and expansion wins in the area. Most notably, JEDCO secured grant funding to construct the Greater New Orleans Food & Beverage Incubator in Churchill Technology & Business Park. The project is expected to break ground in 2026 and will serve a critical need in the region, support small food and beverage businesses in their efforts to start up and grow from right here in JP.

In addition to this significant initiative, Churchill Technology and Business Park, a 480-acre master-planned property on the West Bank, recently became a Louisiana Economic Development (LED) Certified Site. This prestigious designation promotes the property as development-ready, competitive, low-risk, and ideal for a variety of new projects. Churchill Park is one of only two LED Certified Sites in Jefferson Parish.

The accomplishments highlighted throughout this document reflect just a portion of the many successes made possible by JEDCO’s dedicated and forward-thinking team. Recognized as one of North America’s leading economic development organizations, this exceptional group continues to evolve and adapt to meet the dynamic needs of the Jefferson Parish business community.

Jerry Bologna, JEDCO President and CEO, was once again named to the Biz New Orleans 500 as one of the most influential, involved, and inspiring business leaders in the Greater New Orleans area. JEDCO was named the top SSBCI Lender in the state in 2024, thanks to the tremendous vision and actions taken by the JEDCO Finance Team to enhance the lending landscape in Jefferson Parish and Louisiana.

I wish to extend my sincere gratitude to the JEDCO Board of Commissioners. Their enthusiasm, insightful questions, and steadfast support have offered invaluable guidance to our organization. I am also deeply appreciative of the many partners who continue to champion JEDCO’s mission. Our work would not be possible without the collaborative efforts of key stakeholders—Jefferson Parish, business organizations, community leaders, and resource partners. The spirit of partnership that defines Jefferson Parish is fundamental to our continued success and impact.

Halfway through 2025, we’ve already announced multi-million-dollar attraction projects, key business expansions, and game-changing initiatives that will have long-lasting impacts on our economy, workforce, and economic growth. Whether we’re focused on projects that will put our seafood industry at the forefront of sustainability and innovation or new developments that will better support the robust food and beverage industry in our community, it is clear that MORE is possible HERE in Jefferson Parish!

Sincerely,
Mayra E. Pineda
Mayra Pineda
2024 JEDCO Chairwoman

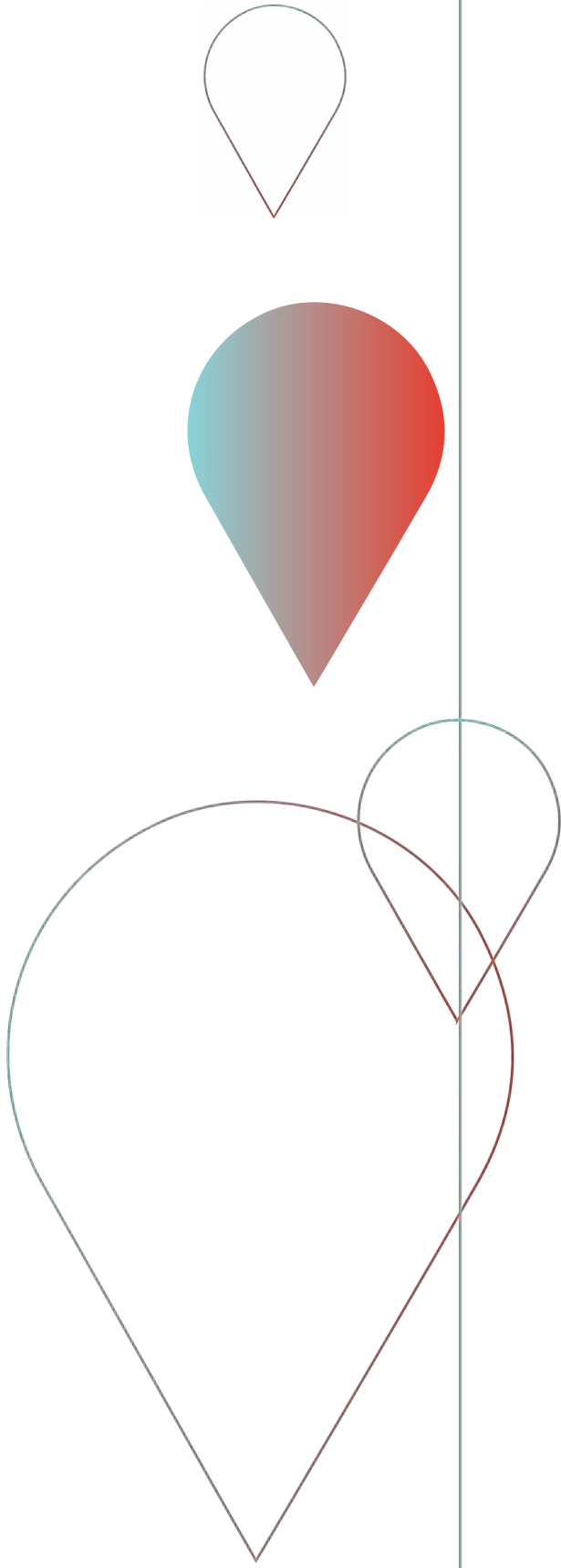


TABLE OF CONTENTS

JEDCO MISSION 01

JEDCO CORE VALUES 01

2024 BY THE NUMBERS..... 02

ECONOMIC DEVELOPMENT WINS..... 03

FINANCE WINS17

JEDCO INITIATIVES21

ECONOMIC AND PERFORMANCE INDICATORS.....32

JEDCO 2024 FINANCIALS.....33

2024 JEFFERSON EDGE FINANCIALS33

ECONOMIC ACCOLADES34

JEDCO STAFF 35

2024 JEDCO COMMISSIONERS
& NOMINATING ENTITIES36

EDGE INVESTORS36

JEDCO MISSION

The Jefferson Parish Economic Development Commission (**JEDCO**) is an independent, yet complementary arm of Jefferson Parish government. JEDCO's mission is to build a resilient, equitable, diverse, and competitive economy by driving the retention and creation of quality jobs, entrepreneurship, innovation, and investment in Jefferson Parish. From directing broad economic development initiatives to delivering small business financing, JEDCO is your partner in progress.

JEDCO CORE VALUES

Integrity



We pride ourselves in demonstrating integrity in all that we do with respect and responsibility. By following up and following through, we generate trust within our business community.

Dynamic



JEDCO is adaptable and progressive. We consistently seek opportunities to deliver creative, innovative solutions to serve the needs of the Jefferson Parish business community.

Collaborative



JEDCO works to enrich and empower our community through collaborating with key partners and connecting businesses with resources to prosper Jefferson Parish.

Service-Oriented



We are funded by the community and serve the community equitably, inclusively, and with dedication to empower all Jefferson Parish companies.

Values

BY THE NUMBERS

EXPANSION PROJECTS

ACTIVE PROJECTS	40
NEW JOBS	918
RETAINED JOBS	5,017
TOTAL INVESTMENT	\$321,639,026

INDUSTRY RECRUITMENT

ACTIVE PROJECTS	23
POTENTIAL TOTAL INVESTMENT	\$910,603,372
JOBS	1,287

2024 HEART SERVICES SUMMARY	2024	Since Inception
Marketing Database Requests	35	9,360
Real Estate Database Requests	40	2,689
Demographic Reports	87	1,749

HEART INCENTIVE PROGRAMS


Program*	Number	New Jobs	Jobs Retained	Investment
Enterprise Zone	3	10	140	\$750,000
Quality Jobs	3	31	12	\$494,906,398
Industrial Tax Exemption Program	5	17	1,052	\$36,110,000
*Some projects are enrolled in more than one incentive program				
Total			\$531,766,398	

We **LOVE** our local businesses and because of that, we do everything we can here at **JEDCO** to sustain, support, and breathe life into our business community. That's why we developed **HEART**, which stands for **H**ub for **E**xpansion, **A**ttraction, **R**etention, and **T**alent! **HEART** is an award-winning business retention, expansion and attraction program designed to pump resources, guidance, and information into our economy, so every business we work with can have their best chance to grow and thrive.



A background image of an industrial facility, likely a refinery or chemical plant, featuring several large, cylindrical storage tanks and complex piping structures. The image is overlaid with a dark blue gradient. The text "ECONOMIC DEVELOPMENT WINS" is centered in a large, white, bold, sans-serif font.

ECONOMIC DEVELOPMENT WINS

MORE HERE. 



UBE

In early 2024, this Japanese chemical company announced plans to build a major manufacturing facility at Cornerstone Energy Park in Waggaman.

\$500 MILLION FOREIGN DIRECT INVESTMENT

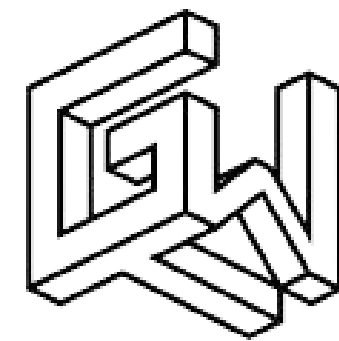
58 DIRECT JOBS

FIRST U.S. MANUFACTURING FACILITY FOR ELECTRIC VEHICLE LITHIUM ION BATTERY INGREDIENTS

DECREASED RELIANCE ON FOREIGN IMPORTS

UBE **BROKE GROUND** IN FEBRUARY 2025

OPERATIONS TO BEGIN IN 2027



GULF WIND
TECHNOLOGY

Headquartered at Avondale Global Gateway, Gulf Wind Technology operates the most advanced rotor technology innovation center in the USA.

\$10 MILLION INVESTMENT

30 DIRECT JOBS

\$83,000 AVERAGE SALARY

POSITIONS JEFFERSON PARISH AS A **GLOBAL PLAYER** IN OFFSHORE WIND POWER



RNGD

**RENEGADE THINKING.
REVOLUTIONARY RESULTS.**

RNGD, a leader in commercial construction and design, announced plans to consolidate their operations and locate their headquarters in Jefferson Parish.

\$25 MILLION INVESTMENT

130 JOBS CREATED

265 JOBS RETAINED

INCLUDES A 25,000 SQ. FT. TRAINING ACADEMY TO BOLSTER WORKFORCE DEVELOPMENT

HOSTED THE GRAND OPENING OF ITS JEFFERSON PARISH LOCATION IN EARLY 2025



A 5th-generation, family-owned company with deep roots in Greater New Orleans announced plans to relocate their headquarters to Jefferson Parish.

123-YEAR-OLD COMPANY BEHIND MAJOR LOCAL FOOD BRANDS

- BLUE PLATE MAYONNAISE
- LUZIANNE TEA
- FRENCH MARKET COFFEE

RETAINED **500 JOBS** IN THE REGION

THEIR ANNOUNCEMENT ADDS TO JEFFERSON PARISH'S **ROBUST FOOD & BEVERAGE INDUSTRY CLUSTER**



BUNGE

Bunge, a global leader in agribusiness, food & ingredients, purchased the former Fuji Vegetable Oil refinery in Avondale with plans to expand.

BROKE GROUND ON PLANNED EXPANSION AT SPECIALITY OILS FACILITY IN AVONDALE IN AUGUST 2024

\$86 MILLION INVESTMENT

CURRENTLY **EMPLOYS 50** PEOPLE

EXPANSION WILL **INCREASE WORKFORCE BY 10%**

EXPANSION WILL INCLUDE **NEW VEGETABLE OIL PROCESSING LINE** AND ADDITIONAL SUPPORT STRUCTURES

FACILITY IS **STRATEGICALLY LOCATED** ADJACENT TO IMTT'S AVONDALE TERMINAL

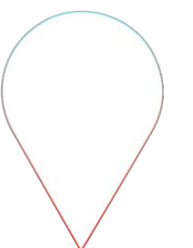


Ochsner Health System is the largest private employer in Jefferson Parish. In 2024, they advanced major initiatives and invested in the future of healthcare in Jefferson, playing a key role in shaping Jefferson Parish as a global destination for world-class care.

NEW **\$300 MILLION CHILDREN'S HOSPITAL** ANNOUNCED

CONTINUED PROGRESS ON **STATE-OF-THE-ART NEUROSCIENCE CENTER** ON JEFFERSON HIGHWAY

ANNOUNCED **10-YEAR PARTNERSHIP** BETWEEN OCHSNER & MD ANDERSON CANCER CENTER





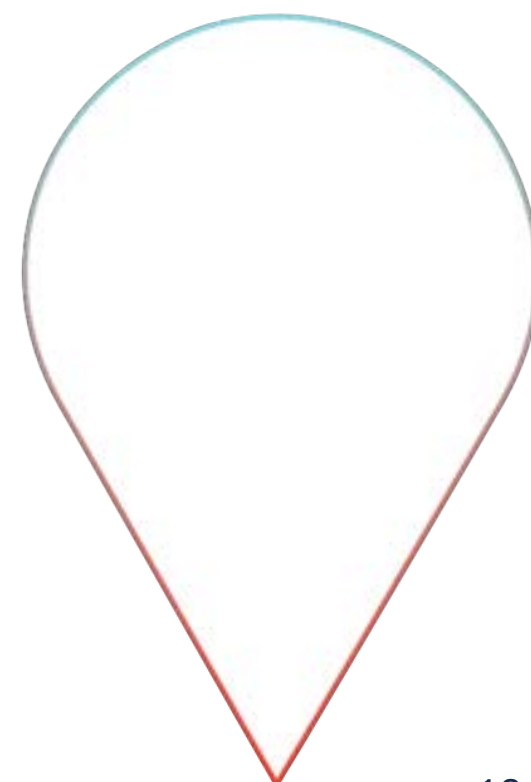
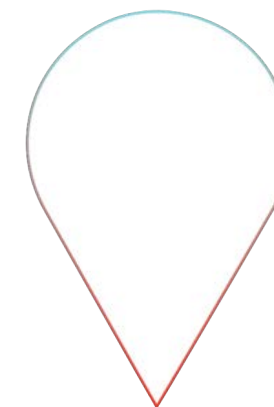
LCMC Health

LCMC delivers world-class healthcare across eight hospital locations in the region, including three in Jefferson Parish.

\$220 MILLION IN UPGRADES TO EAST JEFFERSON GENERAL HOSPITAL & OTHER MEDICAL FACILITIES

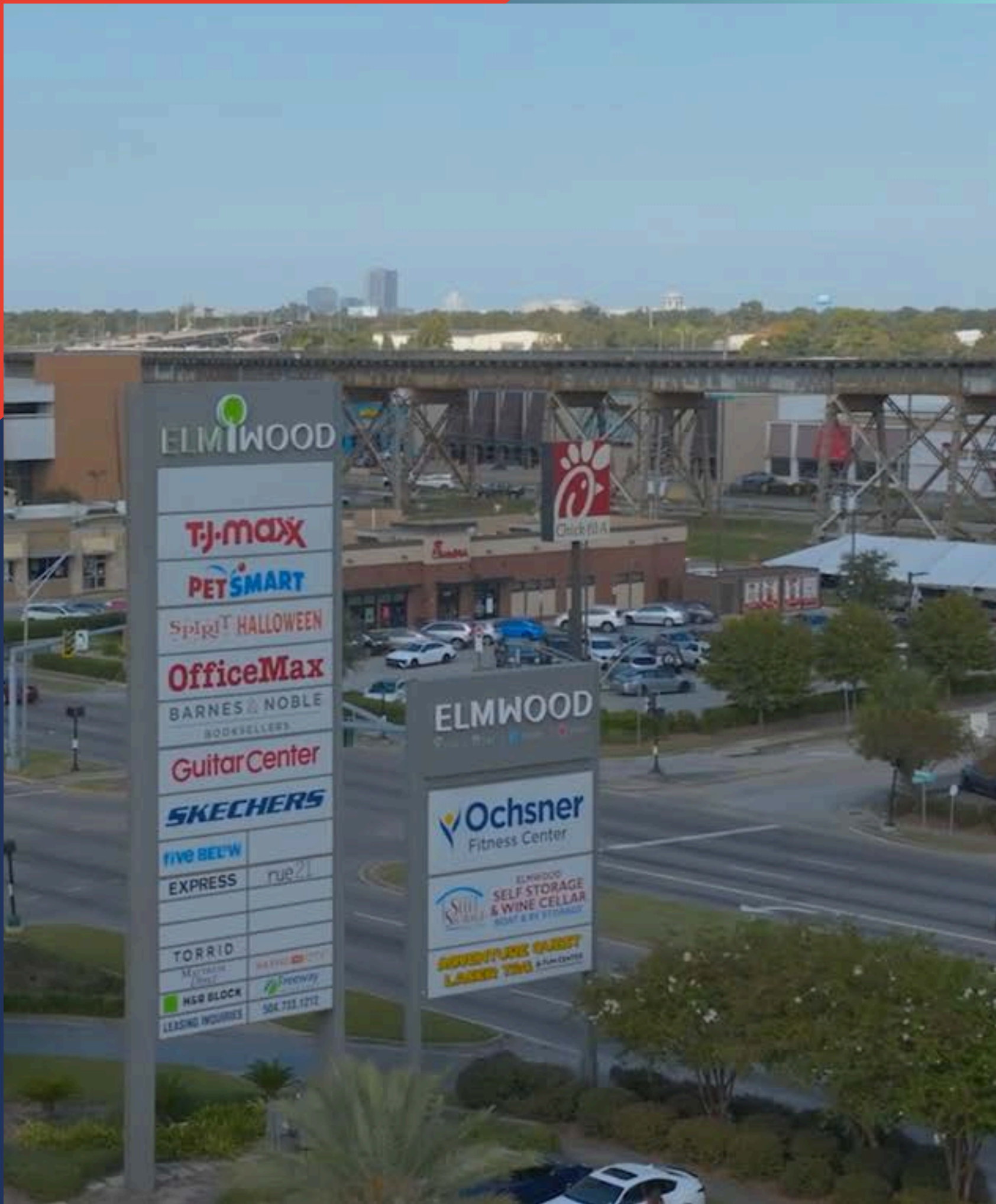
500 TULANE PHYSICIANS AND MEDICAL RESIDENTS MOVED INTO EJGH

MILLIONS INVESTED INTO LAKESIDE HOSPITAL



The Francis

at ELMWOOD



Elmwood Shopping Center continues to attract major retailers and restaurants as part of redevelopment efforts for the property. This includes the construction of a new high-end apartment complex.

PLANS TO REDEVELOP THE FORMER K-MART AT ELMWOOD SHOPPING CENTER INTO A **MIXED-USE, HIGH-END APARTMENT COMPLEX**

ALIGNS WITH TREND TO **REIMAGINE SHOPPING CENTERS INTO WALKABLE NEIGHBORHOODS** WITH A WIDE VARIETY OF AMENITIES



TREASURE CHEST CASINO

Officials cut the ribbon on the new land-based casino at Laketown in Kenner.

PROJECT INCLUDES **8,000 SQ. FT.** OF CONVENTION SPACE

4 NEW RESTAURANTS

LONG-AWAITED PROJECT **BREATHES NEW LIFE** INTO THE LAKETOWN AREA

CREATES JOBS, **INVESTMENT**, AND OPPORTUNITIES

GREATER NEW ORLEANS FOOD & BEVERAGE INCUBATOR

Local, state, and federal leaders joined JEDCO to announce the launch of the Greater New Orleans Food & Beverage Incubator, which will serve a critical need in the region.

\$4.2 MILLION AWARDED FOR DESIGN & CONSTRUCTION

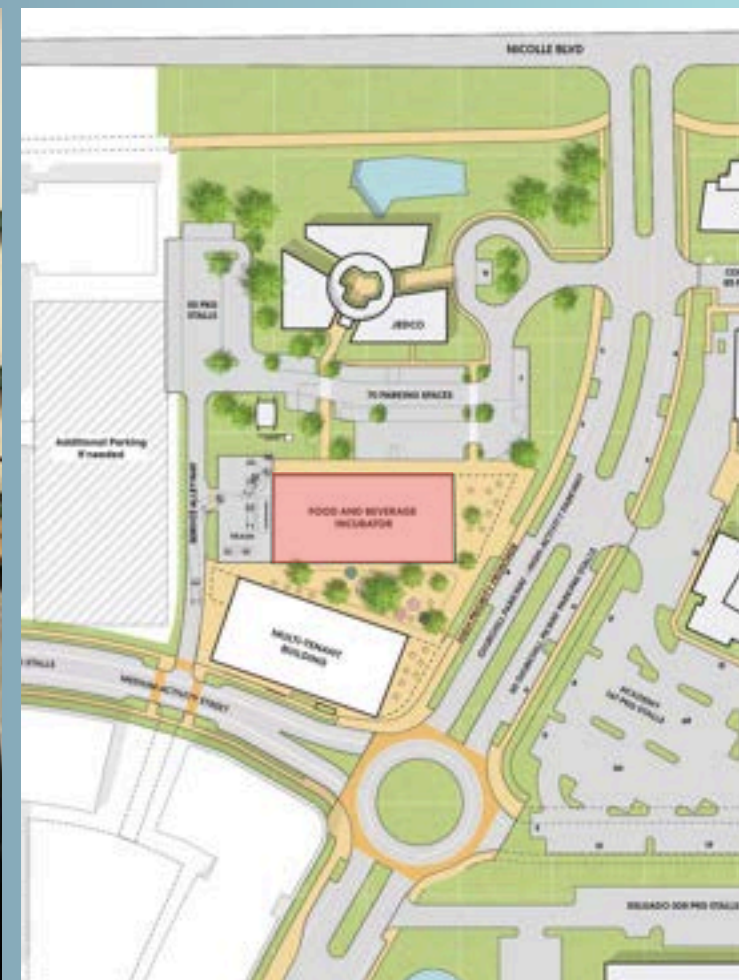
15,000-SQUARE-FOOT FACILITY TO BE BUILT AT CHURCHILL PARK

KEY FEATURES:

- COMMERCIAL KITCHENS
- COLD & FREEZER STORAGE
- DEMONSTRATION AND TRAINING SPACE

EXPECTED TO **BREAK GROUND** IN 2026

WILL SERVE **HOMEGROWN** FOOD & BEVERAGE START-UPS





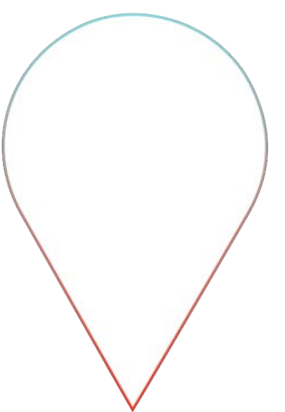
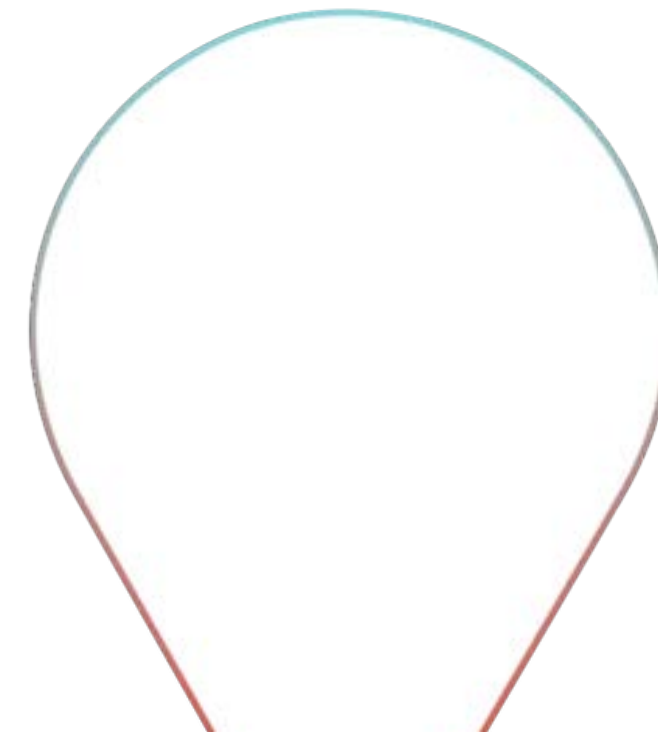
SWAYBOX STUDIOS

Swaybox Studios has pioneered film animation through practical puppetry. Based in Elmwood, this animation studio produces a number of projects, from big budget films to commercials.

ANNOUNCED PLANS TO CREATE A **FULL-LENGTH, BIG-BUDGET FILM** FOR DC STUDIOS

WILL CREATE **240 JOBS** OVER THE NEXT THREE YEARS

CREATING **NEW OPPORTUNITIES** WITHIN THE LOCAL FILM INDUSTRY





KINGFISH DEVELOPMENT

JEDCO and Jefferson Parish broke ground on a new lifestyle development designed to generate more traffic & economic progress in historic downtown Gretna.

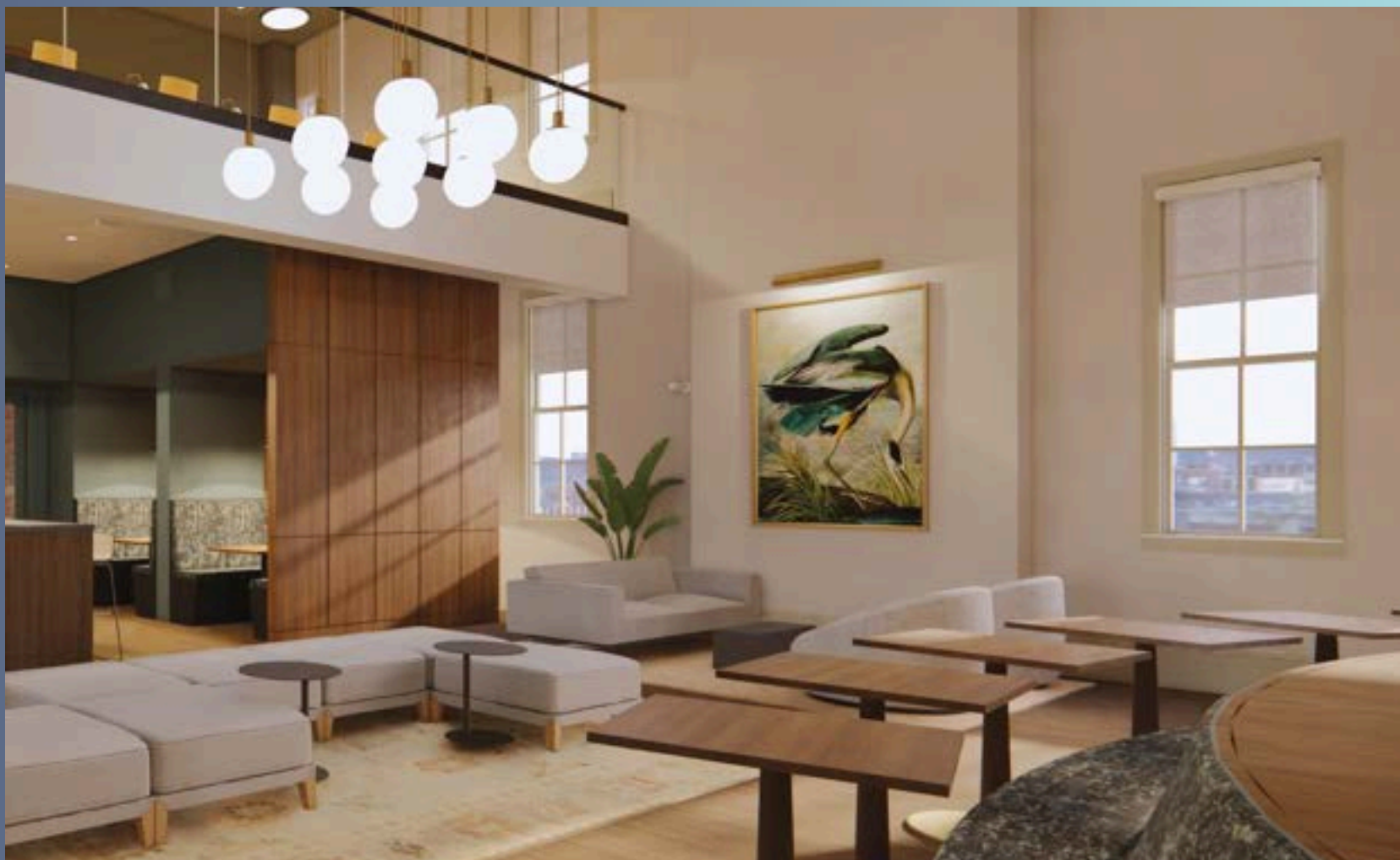
CENTERPIECE OF **TWO-STORY LIFESTYLE** DEVELOPMENT IN GRETNA

FUTURE HOME TO PORT ORLEANS BREWING COMPANY & AVO TACO

MAJOR **PUBLIC-PRIVATE PARTNERSHIP**

ANCHOR PROJECT FOR HISTORIC DOWNTOWN GRETNA





PRIMARY WORKSPACE

A former schoolhouse was transformed into a new coworking and event space in downtown Gretna.

FORMERLY THE **PRIMARY SCHOOLHOUSE** (BUILT IN 1911)

SAT MOSTLY VACANT FOR **50+** YEARS

20,000 SQ. FT. DEVELOPMENT OFFERS FLEXIBLE
COWORKING OFFICE SPACE AND EVENT RENTAL OPTIONS

PROJECT MADE POSSIBLE THROUGH **PUBLIC-PRIVATE
PARTNERSHIP** BETWEEN JEFFERSON PARISH & FORMWORK
DEVELOPMENT

TRANSFORMATIVE PROJECT WILL SERVE LOCAL BUSINESS
OWNERS & **ENTREPRENEURS**

JEDCO FINANCING

MORE HERE 



FINANCE WINS

BY THE NUMBERS:

Loans Funded: **20**

Total Project Cost: \$16,736,066

JEDCO Portion: **\$6,834,950**

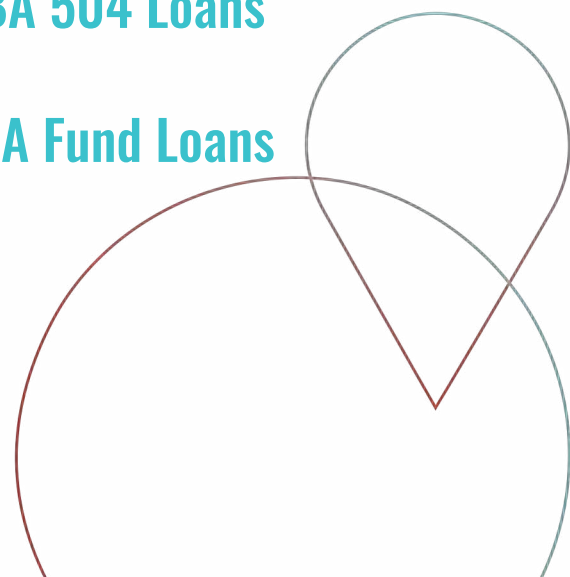
PROJECT BREAKDOWN

2 JEDgrow Loans

11 Microloans

5 SBA 504 Loans

2 SEA Fund Loans



QUATTRO GRAPHICS:

Innovative print and sign shop in Kenner

LOAN DETAILS:

- \$255,000 investment
- JEDCO financed 90%
- JEDgrow Loan



LAS CRUCES TEX MEX:

Tex Mex fusion restaurant in Metairie

LOAN DETAILS:

- \$100,000 investment
- JEDCO financed 100%
- Micro Loan



FINANCE WINS



SHOGUN:

Metairie restaurant serving authentic Japanese flavors for over 4 decades

LOAN DETAILS:

- \$3.2M investment
- JEDCO financed 40%
- SBA504 Loan

ATOMIC BURGER:

Gourmet burger restaurant chain that started in Jefferson Parish

LOAN DETAILS:

- \$2.85M investment
- JEDCO financed 40%
- SBA504 Loan



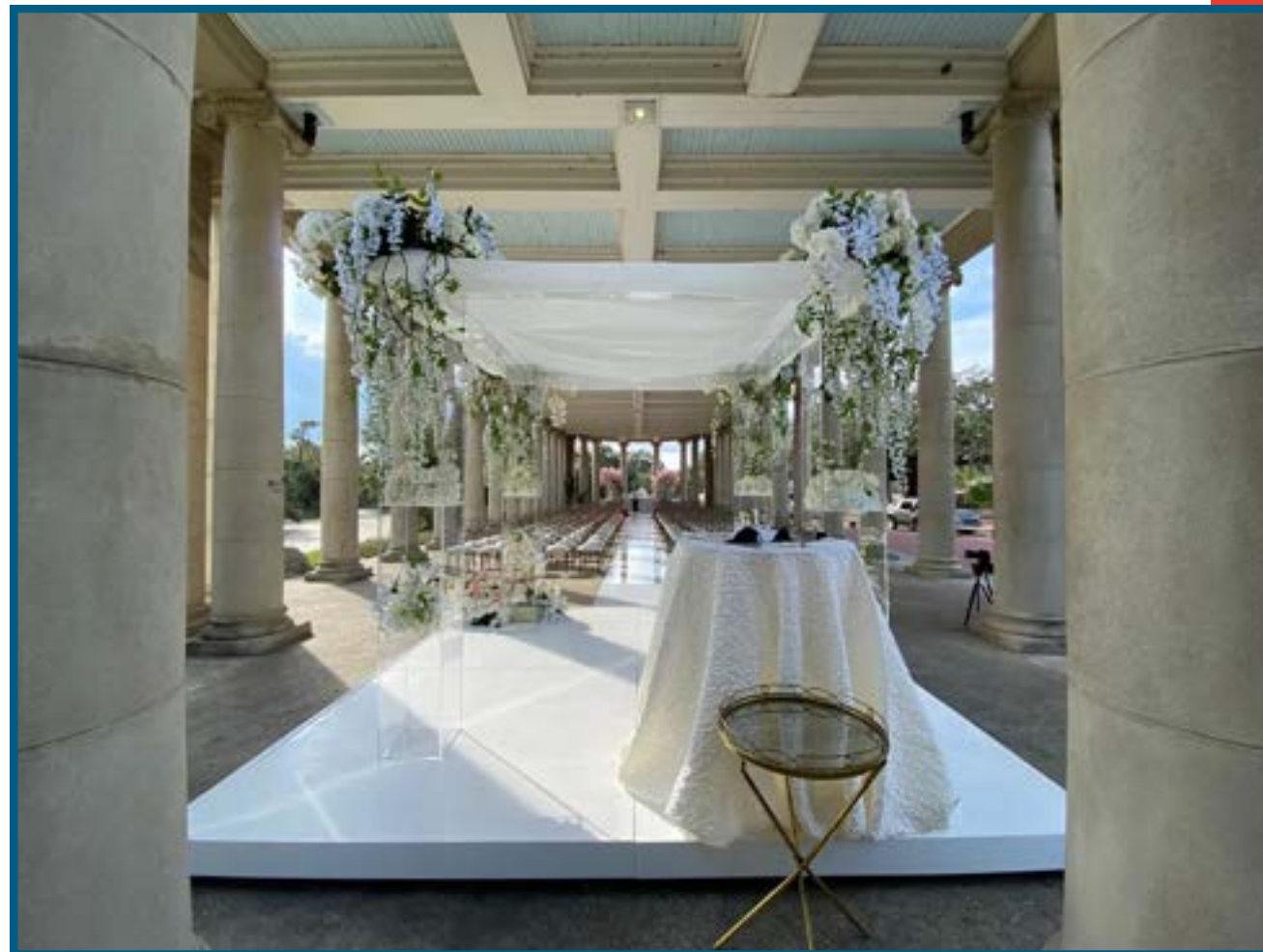
FINANCE WINS

POP NOLA:

Harvey based fabricator that offers bespoke services to clients in the events industry nationwide

LOAN DETAILS:

- \$100K investment
- JEDCO financed 100%
- JEDGrow Loan



MICRO LENDING PROGRAM:

In 2024, Louisiana selected JEDCO as an approved microlender through the state's Small Business Credit Initiative (SSBCI), which will help small businesses access up to \$113 million in federal funds. JEDCO is currently the top performing SSBCI micro loan program lender in the state.



JEDCO INITIATIVES

MORE HERE 



CHURCHILL

TECHNOLOGY + BUSINESS PARK

A BOLD VISION WITH UNRIVALED POTENTIAL

CREATING A **RECOGNIZED REGIONAL CENTER** OF
INDUSTRY INNOVATION & COLLABORATION

25 ACRES SHOVEL-READY (DUE DILIGENCE COMPLETED)

APPROVED AS AN **LED CERTIFIED SITE** IN OCTOBER 2024

SECURED CAPITAL OUTLAY DOLLARS FOR NEW
ROADWAYS (**PUBLIC BID PROCESS IN Q2 2025, 6
MONTHS SURCHARGING AND 6 MONTHS OF
CONSTRUCTION**)

FUTURE SITE OF THE GREATER NEW ORLEANS FOOD &
BEVERAGE INCUBATOR



INSURANCE

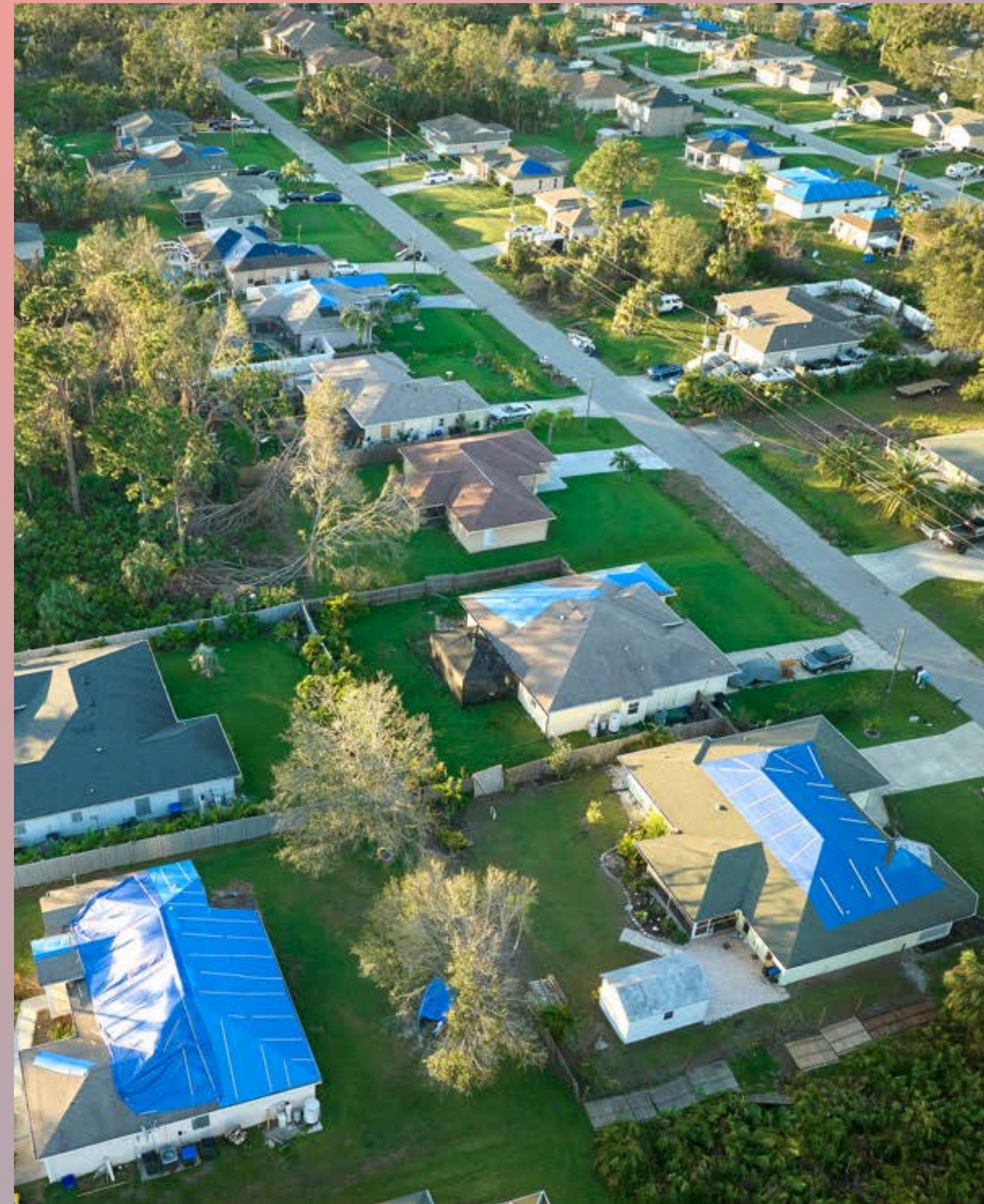
BUILT **TASK FORCE** OF ENGAGED ELECTED OFFICIALS & INDUSTRY LEADERS

DEVELOPED **ACTIONABLE STRATEGIES** THROUGH INSURANCE REPORT

INSURANCE REPORT & ACTION PLAN **CIRCULATED TO LAWMAKERS**

AS OF OCTOBER 2024, JEFFERSON PARISH HAS **637 APPROVED AND PENDING GRANTS** IN THE LOUISIANA FORTIFIED HOME GRANT PROGRAM, OUT OF 2,315 GRANTS STATEWIDE

28% OF ALL GRANTS ACROSS LOUISIANA ARE IN JEFFERSON PARISH



SEAFOOD INDUSTRY

JEDCO PRIORITIZED **SEAFOOD SUSTAINABILITY** AND RESILIENCE THROUGH A VARIETY OF INITIATIVES AND TECHNICAL ASSISTANCE PROGRAMS

JEDCO UTILIZED LED FUNDS & PARTNERED WITH LOCAL STAKEHOLDERS TO DEVELOP A **MARKETING STRATEGY & BRAND** FOR THE GRAND ISLE OFF-BOTTOM OYSTERS BEING SUSTAINABLY HARVESTED IN GRAND ISLE

THE NEW BRAND, **GRAND ISLE JEWELS**, WAS LAUNCHED IN 2025 WITH STATEWIDE PARTNERS IN ATTENDANCE



www.grandislejewels.com
[@grandislejewels](https://www.instagram.com/grandislejewels)



FAÇADE IMPROVEMENT PROGRAM

A NEW RESIDENTIAL FAÇADE IMPROVEMENT GRANT PROGRAM WAS LAUNCHED IN 2024 TO **ELEVATE HOUSING** IN TERRYTOWN

GRANTS RANGING BETWEEN **\$6,900 AND \$10,500** WERE AWARDED TO EACH HOMEOWNER FOR IMPROVEMENTS

27 HOMEOWNERS RECEIVED FAÇADE IMPROVEMENT FUNDS VIA LOTTERY

246 APPLIED



BROWNFIELDS

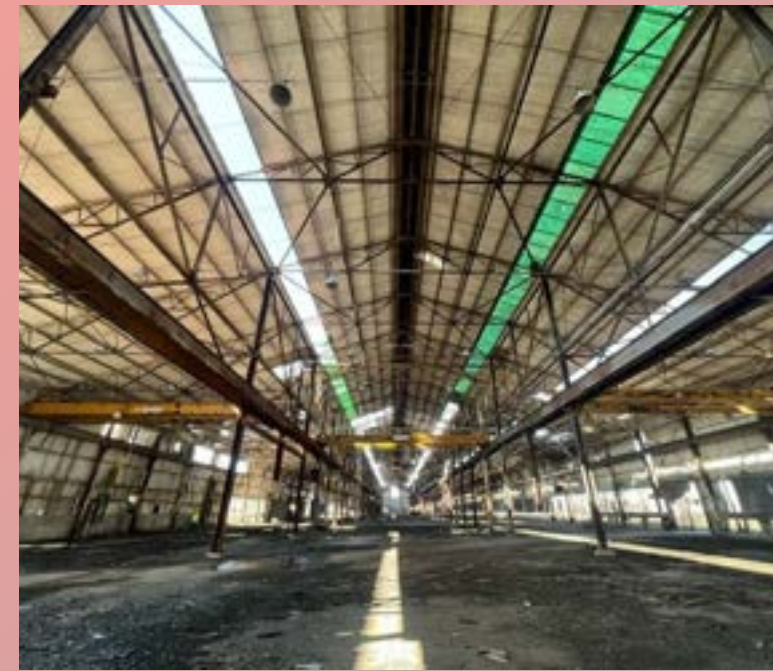
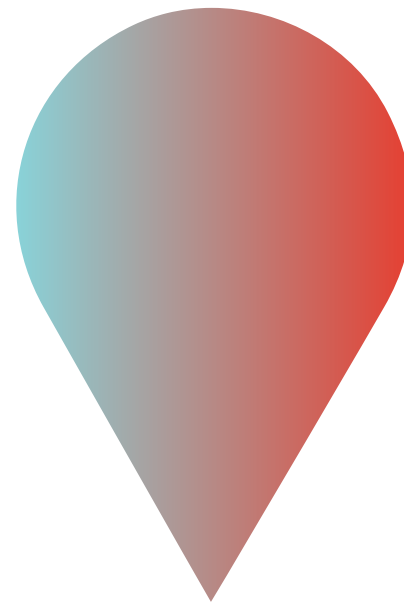
\$600,000 EPA GRANT

16 ASSESSMENTS FUNDED THROUGH GRANT

CAN **FULLY FUND** PHASE I/II ENVIRONMENTAL
ASSESSMENTS & CLEAN-UP PLANS

EXTENDED TO 2025

EXPANDED TO ALL OF JEFFERSON PARISH



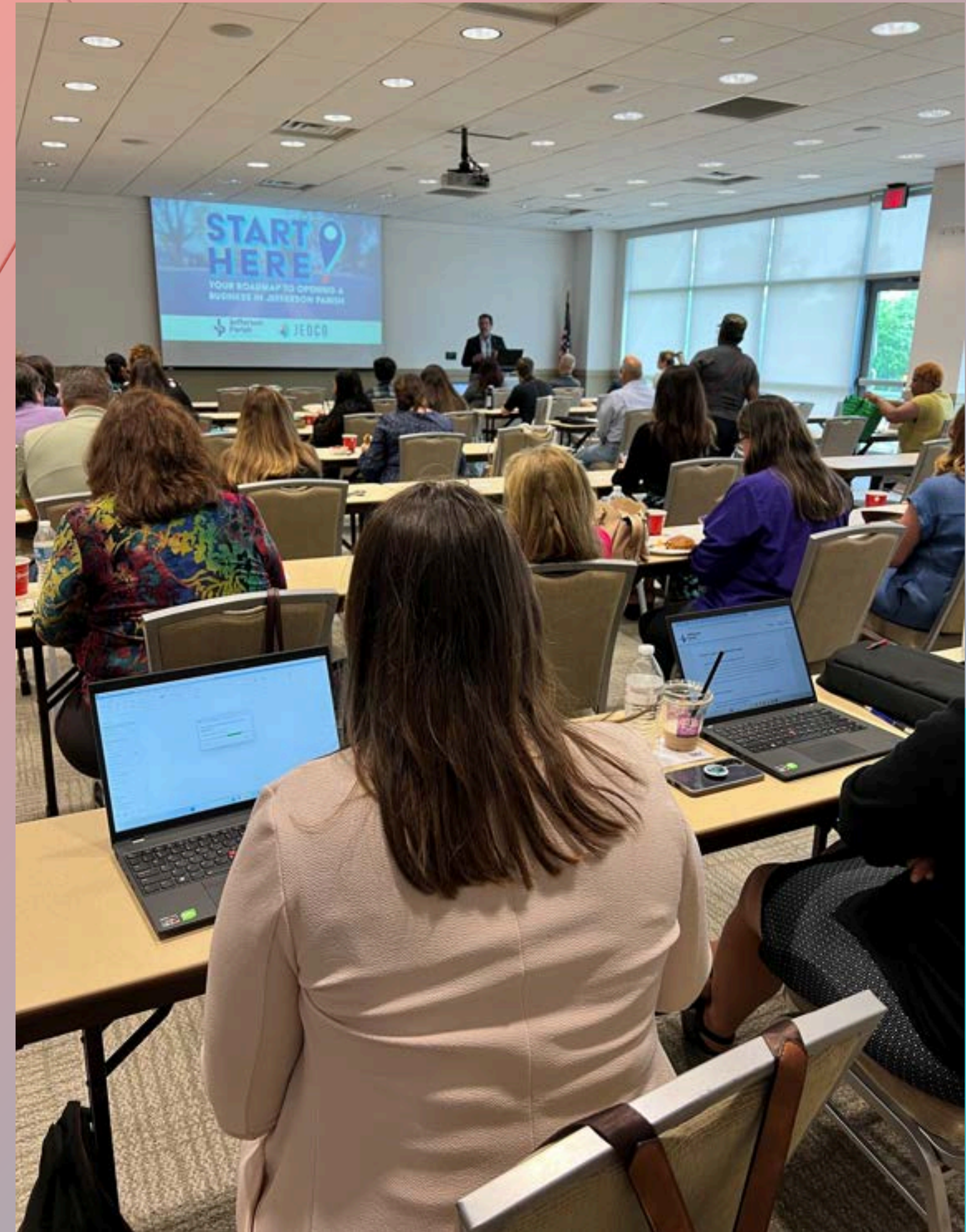
START HERE!

YOUR ROADMAP TO OPENING A
BUSINESS IN JEFFERSON PARISH

SEMINAR DESIGNED TO **SUPPORT** STARTUPS & SMALL
BUSINESS OWNERS INTERESTED IN OPENING THEIR
DOORS IN JEFFERSON PARISH

TOPICS INCLUDED **ZONING, PERMITTING, OCCUPATIONAL
LICENSES, AND CODE ENFORCEMENT**

PART OF **ECONOMIC DEVELOPMENT WEEK** PROGRAMMING



MANUFACTURING WEEK

JEDCO AND **JP SCHOOLS** TEAMED UP TO PLAN A VARIETY OF INDUSTRY TOURS FOR STUDENTS ENROLLED IN LOCAL CTE PROGRAM

100+ JEFFERSON PARISH SCHOOLS STUDENTS ENROLLED

TOURED **4** MANUFACTURING FACILITIES

3 DAYS OF TOURS AND EVENTS

5 SCHOOLS PARTICIPATED





MORE INNOVATION



MORE COLLABORATION



MORE GROWTH



MORE OPPORTUNITY



MORE INVESTMENT



MORE BEAUTY

Be MORE HERE

ATTRACTION CAMPAIGN

JEDCO RECEIVED **\$110,000** FROM JEFFERSON PARISH FOR DEVELOPMENT OF A MULTI-TIERED MARKETING AND ATTRACTION CAMPAIGN

INCLUDES:

- NEW ATTRACTION BRAND
- LOGO
- MESSAGING
- UPDATED WEBSITE (ROLLING OUT IN 2025)

TELLS THE **JEFFERSON PARISH STORY** IN A COMPELLING AND ATTRACTIVE WAY

WEAVES A NARRATIVE THAT **THIS IS WHERE BUSINESSES WANT TO BE**



Invest, Innovate, Celebrate

MORE HERE

JEFFERSON PARISH  JEDCO.ORG

ATTRACTION CAMPAIGN POSITIONING STATEMENT

Jefferson Parish is the ideal environment for a growing ecosystem of businesses considering relocation or expansion. A global competitor in technology, industry, and logistics, JP is located at the crossroads of major international river, rail, and air hubs. Offering an unmatched level of accessibility, natural beauty, and cultural richness, it harmoniously blends history, innovation, and quality of life, making it a dynamic destination for businesses and a welcoming home for families.

Be MORE HERE

BRAND VISION



HISTORICAL DEMOGRAPHIC AND ECONOMIC PERFORMANCE INDICATORS

DEMOGRAPHICS

	2020	2021	2022	2023	2024
Population	431,275	427,803	433,688	437,741	431,376
Per Capita Personal Income (current \$)	\$52,274	\$55,373	\$58,284	\$58,692	\$63,448
Total Personal Income (000s)	\$22,608,304	\$23,940,225	\$25,277,258	\$24,996,051	\$26,761,081
Median Household Income (current \$)	\$53,582	\$55,516	\$60,243	\$62,944	\$64,375
Civilian Labor Force	211,333	207,792	214,564	205,657	207,275
Employment	195,229	199,197	207,598	197,280	198,517
Unemployment Rate	7.60%	4.10%	3.20%	4.21%	4.20%
Average Annual Wage	\$51,948	\$50,874	\$54,217	\$54,501	\$57,360

TAX REVENUES

	2020	2021	2022	2023	2024
Occupational License (000s)	\$7,483	\$7,828	\$9,194	\$8,446	\$8,694
Ad Valorem (000's)	\$237,762	\$240,460	\$246,813	\$264,671	\$290,030
Sales (000's)	\$473,333	\$563,273	\$620,205	\$593,937	\$598,609

ASSESSED VALUE OF PROPERTY

	2020	2021	2022	2023	2024
Real Property (000s)	\$3,010,722	\$3,072,987	\$3,156,389	\$3,283,003	\$3,283,003
Personal Property (000's)	\$947,545	\$926,092	\$965,378	\$1,133,499	\$1,174,561

CONSTRUCTION PERMITS

	2020	2021	2022	2023	2024
RESIDENTIAL					
Number	1,582	2,004	2,481	1,157	929
Value (000s)	\$137,782	\$245,039	\$ 234,086	\$182,440	\$203,228
COMMERCIAL					
Number	686	950	1067	739	310
Value (000s)	\$204,907	\$275,144	\$223,777	\$456,358	\$744,245

JEDCO AND JEFFERSON 2024 FINANCIALS

JEDCO 2024



REVENUES

Occupational License	\$2,556,552
Financing	\$761,344
Economic Development**	\$462,466
Marketing	\$108,290
Interest and Investment Earnings	\$225,954
Tech Park Common Area Revenues	\$19,088
Conference Center	\$5,758
Strategic Initiatives	\$100,000
Industry Recruitment	\$10,500
Churchill Park Development	\$71,428
Special Projects*	605,228

TOTAL \$4,926,608

EXPENDITURES

Administrative	\$1,276,521
Financing	\$481,150
Economic Development	\$440,432
Marketing	\$320,018
JEDCO Building Expenses	\$827,268
Tech Park Expenses	\$60,603
Conference Center	\$99,139
Strategic Initiatives	\$264,050
Industry Recruitment	\$131,516
Churchill Park Development	\$293,795
Special Projects*	\$605,228

TOTAL \$4,799,720

2024 Jefferson EDGE

REVENUES

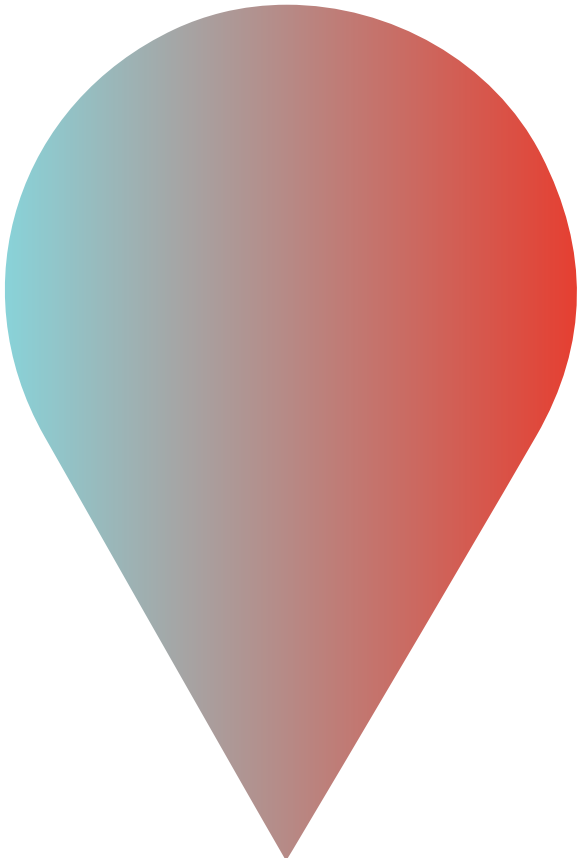
Private Funds	\$257,500
Interest	\$39,162

TOTAL \$296,662

EXPENDITURES

Tech Park Master Plan	\$59,948
Churchill Park Development Plan	\$99,115
Economic Development Services	\$17,416
Marketing	\$29,346
Fundraising	\$29,491
Administrative	\$18,510

TOTAL \$253,826



*Includes GNO, Inc. and Parish CEA Revenues (Insurance White Paper) and related expenses.
**Includes PILOT administration fees.

ECONOMIC ACCOLADES

JEDCO HAS BEEN ACCREDITED THROUGH THE INTERNATIONAL ECONOMIC DEVELOPMENT COUNCIL SINCE 2008. JEDCO IS THE LONGEST CONTINUOUSLY ACCREDITED ECONOMIC DEVELOPMENT ORGANIZATION IN LOUISIANA. THIS PRESTIGIOUS DESIGNATION SETS US APART AS A BEST PRACTICES LEADER IN THE ECONOMIC DEVELOPMENT INDUSTRY.



JEDCO PRESIDENT AND CEO **JERRY BOLOGNA** RECOGNIZED ON THE NEW ORLEANS 500 LIST OF INFLUENTIAL LEADERS



JEDCO BUSINESS AND RETENTION SPECIALIST **STACY RHONE** GRADUATED FROM LEADERSHIP JEFFERSON HOSTED BY THE JEFFERSON CHAMBER OF COMMERCE



CHURCHILL TECHNOLOGY AND BUSINESS PARK DESIGNATED AS A LOUISIANA ECONOMIC DEVELOPMENT CERTIFIED SITE



JEDCO FINANCE NAMED THE TOP SBA504 LENDER IN THE STATE OF LOUISIANA



JEDCO STAFF



Jerry Bologna, CEcD
President & CEO



Lacey Bordelon
Vice President & COO



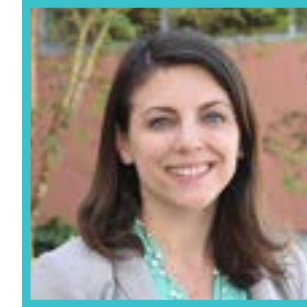
Lisa Cabrera
Loan Specialist



Lauren Cashio
Accounting Manager



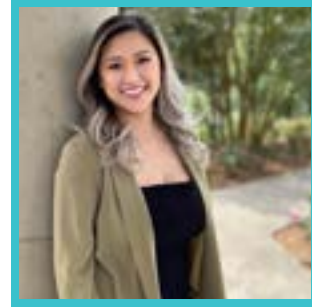
Paul Fischer
Industry Recruitment
Manager



Annalisa Kelly
Director of Strategic
Initiatives & Policy



Jessica Lobue
Finance Operations Manager



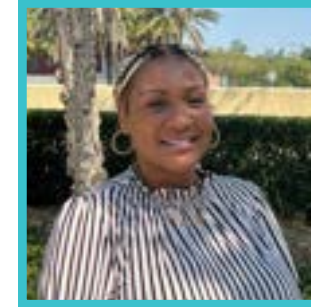
Huyen Nguyen
Business Development
Officer



Lynnette O'Baugh
Administrative Assistant &
Accounting Coordinator



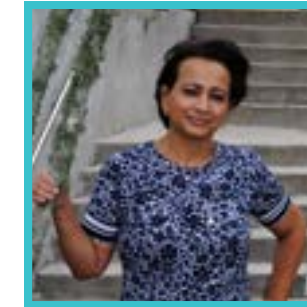
Todd Pereira
Economic Development &
Community Partnerships Manager



Stacy Rhone
Business Retention &
Expansion Specialist



Scott Rojas
Director of Facilities &
Information Technology



Margo Ruiz
Economic Information
& Incentives Manager



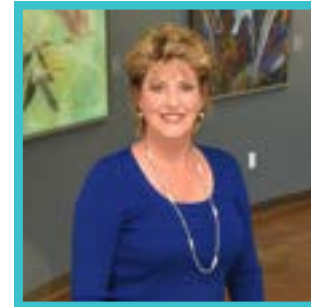
Neil Scheider
Director of Churchill
Technology & Business Park



Kelsey Scram
Director of Marketing &
Communications



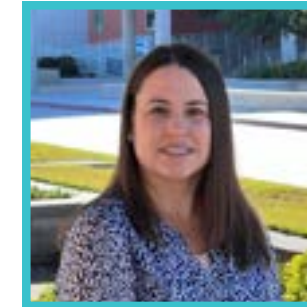
Anthea Smith
Marketing &
Communications Specialist



Penny Weeks
Director of Administration
and Executive Assistant to
President & CEO



Kate Wendel
Director of Economic &
Workforce Development



Jennifer Wollfarth
Chief Financial Officer



JEDCO

2024 JEDCO COMMISSIONERS & NOMINATING ENTITIES



CHAIRWOMAN
Mayra Pineda
*Hispanic Chamber of
Commerce of Louisiana*



VICE CHAIR
Josline G. Frank
*GNO Black Chamber
of Commerce*



TREASURER
James R. Martin Jr.
*Jefferson Business
Council*



SECRETARY
Stephen E. Robinson Jr.
*Parish President Cynthia Lee
Sheng*



Mickal Adler
*Jefferson Chamber of
Commerce – East Bank*



Jimmy Baum
Council District 2



Kenneth Bertucci
*Elmwood Business
Association*



Billy Douglass
*Council -at-Large,
Division A*



Joseph Ewell
Council District 3



Michael Fahrenholt
*Jefferson Chamber of
Commerce – West Bank*



Brian Heiden
Council District 1



Teresa Lawrence
*Women's Business
Enterprise Council South*



Lynda Nugent-Smith
Council District 4



Melissa O'Neal
*Apartment Association
of Greater New Orleans*



Paula Polito
Council District 5



Joseph Riccobono
*Metairie Business
Development District*



Gene Sausse
*Council-at-Large,
Division B*



Melissa Simeon
*Home Builders
Association of Greater
New Orleans*



Robert Stevens
*New Orleans
Metropolitan
Association of Realtors*



Teri Tucker
*Westbank Business
and Industry
Association*



Shondra Williams
*Jefferson Business
Council*

2024 EDGE INVESTORS

Innovator: \$25,000+

Avondale Global Gateway
Favrot & Shane
First Horizon
LCMC Health
Ochsner Health System
Outfront Media

Lakeside Shopping Center
Lauricella Land Company
OnPath Credit Union
Peoples Health
Port of New Orleans
Red River Bank
Renaissance Publishing/
Biz New Orleans

Groundbreaker: \$15,000+

Entergy Louisiana
Jefferson Business Council
Jefferson Financial
Federal Credit Union

Collaborator: \$2,500+

Delta Personnel, Inc.
Fidelity Bank
Gulf Coast Bank & Trust Company
Metairie Bank & Trust
Select Properties
Uniti Fiber
USI Insurance Services

Influencer: \$5,000+

Adams and Reese LLP
ATMOS Energy LA
Bonvenu Bank
Hancock Whitney Bank
Home Bank
Jack Stumpf & Associates
Jefferson Convention &
Visitors Bureau
Laitram, LLC

Supporter \$500+

Bryan Imports, LLC
LaPorte, APAC
Waldemar S. Nelson & Company

MORE HERE

JEDCO.ORG



700 CHURCHILL PARKWAY • AVONDALE, LA 70094



504.875.3908



INFO@JEDCO.ORG



JEDCO.ORG